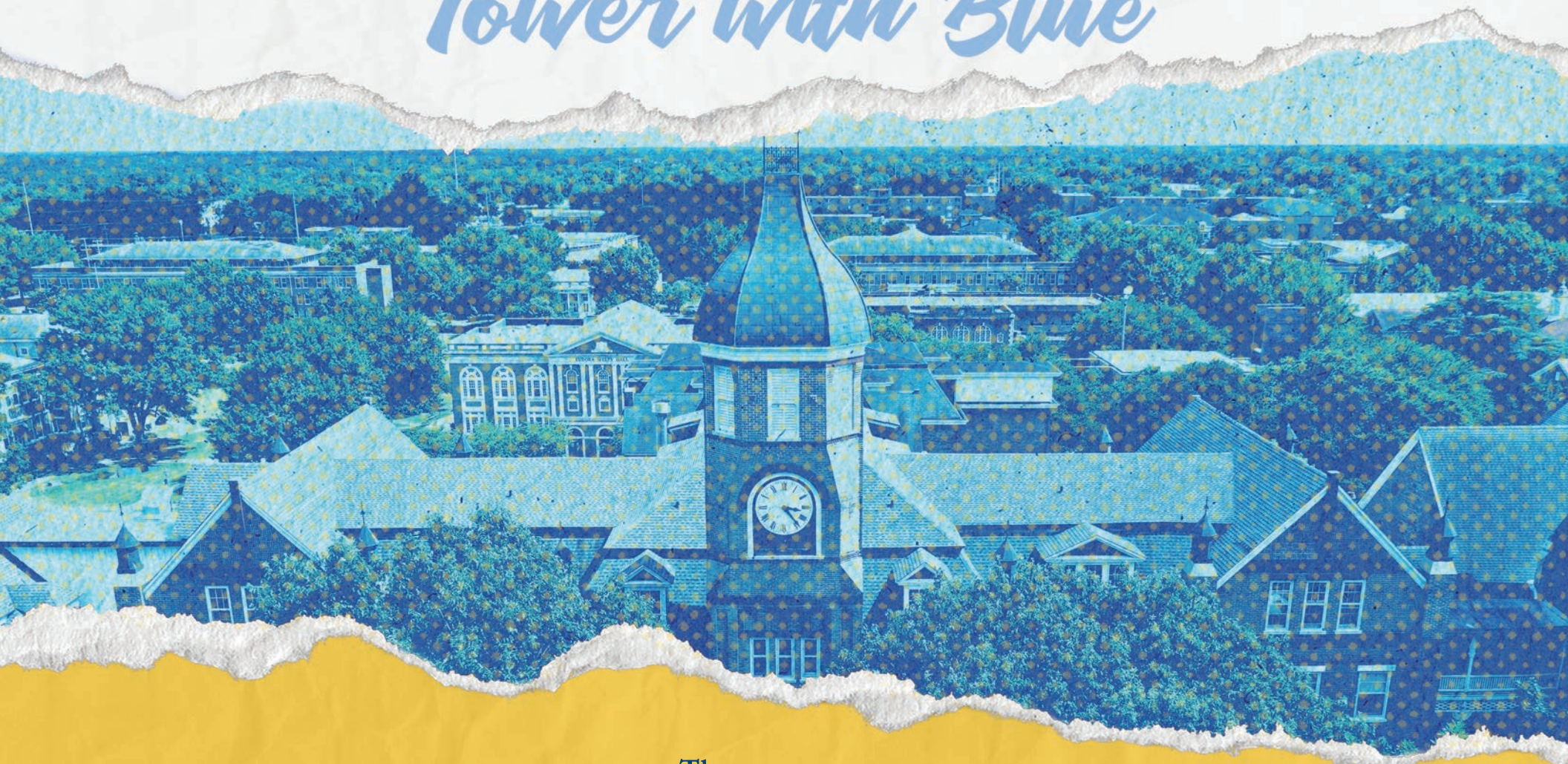


# BE BOLD

*Tower with Blue*



The  
**W**



# BE READY

## FRESHMEN

All freshmen students must submit official high school transcripts, senior schedules and ACT/SAT scores. Students with at least a **16 ACT** and a **2.5 College Prep GPA**, an **18 ACT** and a **2.0 College Prep GPA**, or a **3.2 College Prep GPA** will be accepted.

## TRANSFER

Students may be accepted for transfer from other regionally accredited colleges and universities if a minimum **2.0 cumulative GPA** has been maintained on all course work attempted. Official transcripts must certify that the student is eligible to re-enter the college from which the student is transferring. Applicants must list all colleges attended on the application for admission.

## FRESHMEN SCHOLARSHIPS

To qualify for a scholarship award at The W, your ACT/ SAT score and your college preparatory curriculum (CPC) GPA from high school are weighed to determine your award range. Students must submit the Free Application for Federal Student Aid (FAFSA). All merit awards begin with at least an **18 ACT** or **960 SAT** and a **3.0 CPC GPA** or a **20 ACT** or **1030 SAT** and a **2.75 CPC GPA**.

## TRANSFER SCHOLARSHIPS

Awards are based on completion of the minimum of 24 transferable hours and a **2.75 transferable GPA**.

LEARN MORE AT:  
[MUW.EDU/SCHOLARSHIPS](http://MUW.EDU/SCHOLARSHIPS)



# MONEY MATTERS

## FINANCIAL AID

Approximately 91% of The W's student body receives some type of federal financial aid. The FAFSA is available to fill out beginning October 1. Don't forget to list The W's school code, 002422, when completing.

LEARN MORE AT:  
[MUW.EDU/FINAID](http://MUW.EDU/FINAID)

## TUITION AND FEES FOR EACH SEMESTER

**\$3,933**

TUITION

**\$4,050**

ESTIMATED  
ROOM/BOARD FEE





**3,453**  
ANNUAL TOTAL  
HEADCOUNT

**11:1**  
STUDENT TO FACULTY  
RATIO

**NATION'S  
LEADING**  
TRANSFER UNIVERSITY





# LIVING THE OWL LIFE

The W offers a unique on-campus residential experience, with amenities such as:

- + Main lobby areas
- + Free unlimited laundry
- + Computer labs in each hall
- + High speed wireless internet
- + Suite-styled bathrooms in all halls
- + Lounges on each floor
- + Central heat and air
- + 24-7 access to staff and campus police
- + Fully furnished rooms
- + Swipe card access into building

After you move-in, there will be plenty of activities to introduce you to all The W has to offer. You'll have many conveniences and find a community of friends and common interests.

## FRESHMAN RESIDENCY PROGRAM

Research across the United States over the last 30 years has found that students who live in university-provided housing perform better academically and enjoy a higher degree of satisfaction with their college experience more than

students who live off-campus or commute. In recognition of the value of the living-learning experience associated with on-campus living, The W requires first-year students to live on campus in residence halls.

LEARN MORE AT:  
[MUW.EDU/HOUSING](http://MUW.EDU/HOUSING)





# BE INVOLVED

With options ranging from social clubs to our leadership program, Student Life offers something for everyone and countless ways to shine. Tailor your W journey by getting involved, meeting new people and growing as a leader.

## BLUES WEEK

Jump into your W experience with our first week of programming! Socials, traditions and service events pack the schedule and help you get started as a new Owl.

## STUDENT PROGRAMMING BOARD

Enjoy or organize interactive and engaging events through SPB. Performances range from dance parties and relaxation days to traditional events that connect every student to the Long Blue Line.

## STUDENT ORGANIZATIONS

Student organizations offer opportunities to cultivate new interests, develop your interpersonal skills and challenge you to become a leader on campus and in the community. Academic, special interest and social organizations are among the options for you.

## GREEK LIFE & SOCIAL CLUBS

Social organizations provide a loyal and supportive community in which students can cultivate new leadership skills, academic discipline, event planning, financial responsibility and social networking skills. The W offers a variety of Social Club and Greek Life opportunities for students.

BE INVOLVED AT:  
[MUW.EDU/STUDENTLIFE](http://MUW.EDU/STUDENTLIFE)

“BLUES WEEK  
PROVIDES THE  
FOUNDATION FOR  
ESTABLISHING  
CONNECTIONS  
AROUND CAMPUS.  
BLUES WEEK IS  
AMAZING!

I AM GLAD I ATTENDED.

TYLER J. WILLIAMS  
BIOLOGY WITH  
TEACHER CERTIFICATION







**17**

**INTERCOLLEGIATE  
ATHLETIC TEAMS**

**3**

**USCAA DIVISION I  
NATIONAL  
CHAMPIONSHIPS**

**(1 TEAM / 2 INDIVIDUAL)**

**2023-24**

**NCAA DIVISION III  
BOUND**



# OWLSATHLETICS

## OWLS INTERCOLLEGIATE ATHLETIC TEAMS

### MEN'S

BASEBALL  
BASKETBALL  
CROSS COUNTRY  
GOLF  
SOCCER  
TENNIS  
TRACK & FIELD

### WOMEN'S

BASKETBALL  
CROSS COUNTRY  
GOLF  
SOCCER  
SOFTBALL  
TENNIS  
TRACK & FIELD  
VOLLEYBALL

Intercollegiate athletics returned to The W in 2017-18. The W is a member of the United States Collegiate Athletic Association (USCAA) and a provisional Division III member of the National College Athletic Association (NCAA). The women's basketball team won the USCAA Division I National Championship in 2018-19. In 2021, The W won the USCAA Individual National Championship in both men's and women's golf.

Under the direction of new athletic director Jennifer Claybrook, The W will become a full-fledged member of the NCAA and is expected to begin full conference affiliation in 2023-24.

### BEYOND THE GAME

Whether on the fields of competition – or in the classroom – The W has set a standard of excellence. Through the 2021-2022 season, student-athletes earned 57 USCAA All-Academic Team members, 17 USCAA All-American honors and had a departmental GPA of 3.28.

[OWLSATHLETICS.COM](http://OWLSATHLETICS.COM)



“THE W AND THE PEOPLE IN IT DEFINITELY WANT YOU TO SUCCEED AND GIVE YOU THE RESOURCES TO SUCCEED.”

JOHN MCGEE, '21  
POLITICAL SCIENCE & HISTORY  
DUAL SPORT,  
STUDENT-ATHLETE







# HONORS COLLEGE



The Ina E. Gordy Honors College offers academic community in honors courses and beyond, opportunities to work closely with faculty across campus and hands-on, real-world experiences that matter, including independent research and study abroad.

## SCHOLARSHIPS

Four-year and transfer students receiving the **Presidential Award** are automatically qualified to enroll in the Honors College and only need to inform the College of their acceptance by emailing [honors@muw.edu](mailto:honors@muw.edu).

Students receiving the **Centennial Award** or the **Honors Award** participate in the Gordy Honors Residential Program, including Study Abroad in the summer after the sophomore year, and complete the Four-Year Honors Curriculum. When students apply to The W, they are notified if they qualify for these competitive scholarships and are invited to interview. Other students may also request admission to the Residential Program if space is available.

LEARN MORE AT:  
[MUW.EDU/HONORS](http://MUW.EDU/HONORS)



DISCOVERY AND CREATIVITY LIVE HERE



# BEHOME

Be home while away from home.

The W campus has been recognized as one of the South's most beautiful campuses and is within walking distance of historic downtown Columbus. Home to about 26,000 residents, the city offers opportunities for employment, affordable housing and cultural events.

The vibrant downtown offers plenty of community events, art festivals, restaurants, boutiques, the Rosenzweig Arts Center and the beautiful Columbus Riverwalk.

Columbus sits on the banks of the Tombigbee River, and has been home to icons, including Pulitzer Prize-winning authors, Oscar-winning producers, all-star athletes and many more.

We think you'll love our city.

SCHEDULE A  
CAMPUS TOUR  
TODAY AND  
BE HOME AWAY  
FROM HOME:  
[MUW.EDU/VISIT](http://MUW.EDU/VISIT)







# DON'T STRUGGLE APPLYING IS EASY!

## 1. COMPLETE A FREE ADMISSIONS APPLICATION

## 2. SUBMIT REQUIRED DOCUMENTS

**FRESHMAN:** HIGH SCHOOL TRANSCRIPT, SENIOR SCHEDULE,  
AND ACT/SAT SCORE

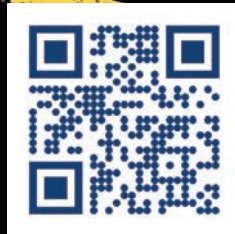
**TRANSFER:** OFFICIAL TRANSCRIPTS ARE REQUIRED FROM  
ALL SCHOOLS ATTENDED

## 3. SUBMIT YOUR FEDERAL STUDENT AID (FAFSA)

FREE APPLICATION AVAILABLE ONLINE AT **STUDENTAID.GOV**

## 4. SEND US YOUR IMMUNIZATION RECORDS

APPLY ONLINE TODAY AT  
**MUW.EDU/APPLY**  
OR SCAN THE QR CODE.





# MAJORS & PROGRAMS

## **BIOLOGY\* (BS)**

## **BUSINESS ADMINISTRATION (BAS)**

CULINARY ARTS  
GENERAL BUSINESS  
HEALTH CARE MANAGEMENT  
HUMAN RESOURCES MANAGEMENT  
LEGAL ADMINISTRATION  
MANAGEMENT  
MANAGEMENT INFORMATION SYSTEMS  
MARKETING  
NONPROFIT MANAGEMENT  
SPORTS MANAGEMENT

## **BUSINESS ADMINISTRATION (BBA)**

ACCOUNTING  
GENERAL BUSINESS  
HEALTH CARE MANAGEMENT  
HUMAN RESOURCES MANAGEMENT  
MANAGEMENT  
MANAGEMENT INFORMATION SYSTEMS  
MARKETING  
NONPROFIT MANAGEMENT  
SPORTS MANAGEMENT

## **CHEMISTRY (BS)**

## **COMMUNICATION (BA & BS)**

## **CULINARY ARTS (BS)**

MINOR REQUIRED IN CULINARY MANAGEMENT,  
PASTRY ARTS, OR NUTRITION

## **EARLY CHILDHOOD DEVELOPMENT (BS)**

## **ELEMENTARY EDUCATION (BS)**

## **ENGLISH\* (BA)**

AFRICAN AMERICAN LITERATURE  
CREATIVE WRITING  
ENGLISH W/SECONDARY EDUCATION  
LITERATURE  
PROFESSIONAL WRITING

## **FAMILY SCIENCE (BS)**

## **FINE ARTS (BFA)**

GRAPHIC DESIGN  
STUDIO ART - CERAMICS, DRAWING &  
PAINTING, PHOTOGRAPHY, PRINTMAKING

## **HISTORY\* (BA)**

HISTORY  
SECONDARY EDUCATION CERTIFICATION  
IN HISTORY & SOCIAL STUDIES  
PUBLIC HISTORY

## **INTERDISCIPLINARY STUDIES (BA & BS)**

## **KINESIOLOGY (BS)**

EXERCISE SCIENCE  
PRE-PHYSICAL THERAPY  
PRE-OCCUPATIONAL THERAPY

## **LEGAL STUDIES (BA & BS)**

## **MATHEMATICS\* (BA & BS)**

## **MUSIC (BA)**

MUSIC COMPOSITION  
MUSIC PERFORMANCE

## **MUSIC\* (BM)**

MUSIC EDUCATION - CHORAL & INSTRUMENTAL  
MUSIC THERAPY

## **NURSING (ASN & BSN)**

GENERIC OPTION  
ADVANCED PLACEMENT OPTION - LPN-TO-RN  
ADVANCED PLACEMENT OPTION - RN-TO-BSN

## **PHYSICAL SCIENCES\* (BS)**

## **POLITICAL SCIENCE (BS)**

POLITICAL SCIENCE  
NONPROFIT ADVOCACY  
SOCIAL STUDIES

## **PROFESSIONAL STUDIES (BPS)**

## **PSYCHOLOGY (BA & BS)**

## **PUBLIC HEALTH EDUCATION (BAS & BS)**

## **SPANISH\* (BA)**

## **SPEECH-LANGUAGE PATHOLOGY (BS)**

## **THEATRE\* (BA)**

## **UNIVERSITY STUDIES (BUS)**

UNIVERSITY STUDIES (COMPLETE2COMPETE)

## **WOMEN'S, GENDER, AND SEXUALITY STUDIES (BA)**

\*DENOTES TEACHER CERTIFICATION AVAILABLE

FACULTY ADVISERS WILL ALSO HELP  
STUDENTS PLAN AN APPROPRIATE COURSE  
OF STUDY TO PREPARE FOR APPLICATION TO  
PROFESSIONAL SCHOOLS OF DENTISTRY, LAW,  
MEDICAL TECHNOLOGY, MEDICINE, PHARMACY,  
VETERINARY MEDICINE, OCCUPATIONAL  
THERAPY AND PHYSICAL THERAPY.



# CONTACTUS

## **ADMISSIONS**

662.329.7106  
MUW.EDU/ADMISSIONS

## **FINANCIAL AID**

662.329.7114  
MUW.EDU/FINAID

## **UNIVERSITY ACCOUNTING**

662.329.7210  
MUW.EDU/ACCOUNTING

## **ARTS & SCIENCES**

662.329.7386  
MUW.EDU/AS

## **BUSINESS & PROFESSIONAL STUDIES**

662.329.7152  
MUW.EDU/BUSPRO

## **CULINARY ARTS INSTITUTE**

662.241.7472  
MUW.EDU/CULINARY

## **NURSING & HEALTH SCIENCES**

662.329.7299  
MUW.EDU/NHS

## **SCHOOL OF EDUCATION**

662.329.7191  
MUW.EDU/EDUCATION

## **HOUSING & RESIDENCE LIFE**

662.329.7127  
MUW.EDU/HOUSING

## **POLICE DEPARTMENT**

662.241.7777  
MUW.EDU/POLICE

## **REGISTRAR**

662.329.7135  
MUW.EDU/REGISTRAR

## **STUDENT SUCCESS CENTER**

662.329.7138  
MUW.EDU/SSC

**MUW.EDU**



@MUWEDU