



2017-18 Fact Book

Office of Institutional Research and Assessment
Reneau Hall - 118
1100 College St., MUW - 160
Columbus, MS 39701
(662)-329-8543

Mississippi University for Women 2017-18 Fact Book

**Office of Institutional Research and Assessment
Reneau Hall - 118
1100 College St., MUW - 160
Columbus, MS 39701
(662)-329-8543**

Mississippi University for Women

2017-18 Fact Book

Table of Contents

University Organizational Chart	1
MUW Vision, Mission, & Guiding Principles	2
MUW Strategic Priorities and Goals	4
MUW Profile	5
Fall 2017 Profile	6
EAC Report Card: 2015-16	8
1. First-Time Student	
1.1 First-Time Freshman Enrollment & Funnel Rates: Fall Terms	10
1.2 First-Time, Full-Time Bachelor’s Degree Seeking Freshman Headcount: Graph: Fall Terms... 10	
1.3 First-Time Transfer Enrollment & Funnel Rates: Fall Terms	11
1.4 First-Time, Full-Time Bachelor’s Degree Seeking Transfer Headcount: Graph: Fall Terms..... 11	
1.5 First-Time, Full-Time Bachelor’s Degree Seeking Freshman ACT & SAT Scores: Fall Terms 12	
1.6 First-Time, Full-Time Bachelor’s Degree Seeking Freshman Cohort Retention & Graduation Rates	13
1.7 First-Time, Full-Time Bachelor’s Degree Seeking Transfer Cohort Retention & Graduation Rates	14
2. Student Enrollment	
2.1 Unduplicated Headcount and FTE Enrollment: Fall Terms	15
2.2 Duplicated Headcount by Campus: Fall Terms.....	15
2.3 Unduplicated Headcount and FTE Enrollment: Spring Terms.....	16
2.4 Unduplicated Headcount and FTE Enrollment: Summer Terms.....	16
2.5 Unduplicated Enrollment by Gender: Fall Terms	17
2.6 Unduplicated Enrollment by Race/Ethnicity: Fall Terms	17
2.7 Unduplicated Enrollment by Race/Ethnicity, Gender and FT/PT Status: Fall Terms.....	18
2.8 Unduplicated Enrollment and Credit Hr. Production by FT/PT Status: Fall Terms.....	19
2.9 Unduplicated Enrollment by Student Classification: Fall & Spring Terms	20
2.10 Unduplicated Enrollment by Credit Hrs. and Student Classification: Fall 2017.....	21
2.11 Fiscal Year Headcount and FTE Enrollment.....	22
2.12 Unduplicated Enrollment by Age Distribution and Student Classification: Fall Terms	23
2.13 Unduplicated Enrollment by Non-traditional and Traditional Students: Fall Terms	24
2.14 Residence Hall Student Enrollment: Fall Terms	25
2.15 Unduplicated Enrollment by Residence Hall and Commuter Students: Fall Terms	26
2.16 Unduplicated Enrollment by Course Method: Fall Terms	27
2.17 Unduplicated Enrollment by State of Residence: Fall Terms.....	28
2.18 Unduplicated Enrollment by Country: Fall Terms	30
2.19 Unduplicated Enrollment by MS County: Fall Terms.....	31
2.20 Unduplicated Enrollment by IHL Official API: Fall 2017.....	34
2.21 Unduplicated Enrollment by IHL Official API: Spring 2018.....	35

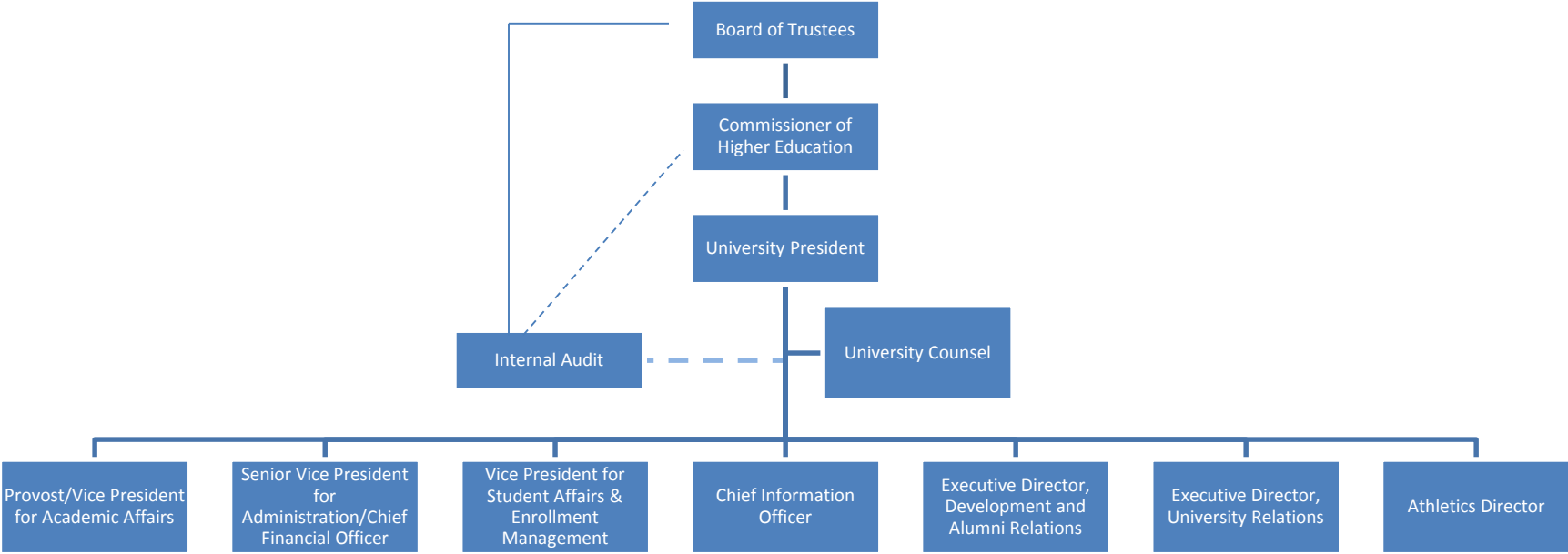
3. Program Enrollment & Degrees Awarded	
3.1 Unduplicated Enrollment by College & Department: Fall Terms.....	36
3.2 Unduplicated Enrollment by College, Department, & Major/Concentration: Fall Terms	37
3.3 Unduplicated Enrollment by Minor: Fall Terms	42
3.4 Unduplicated Enrollment by Second Major: Fall Terms.....	45
3.5 Class Type Enrollment: Fall Terms.....	47
3.6 Credit Hour Generation by College & Department: 3 Years.....	48
3.7 Online Credit Hour Generation by College and Department: 3 Years	50
3.8 Degrees Awarded by IHL Official API: AY 2017	52
3.9 Degrees Awarded by CIP, Major/Concentration, Race/Ethnicity and Gender: AY 2017.....	53
3.10 Degrees Awarded: Chart: AY 2017.....	57
3.11 History of Degrees Awarded by Program and CIP: 5 Years	58
3.12 History of Degrees Awarded by Program, CIP, & Gender: 5 Years.....	60
3.13 Top Bachelor and Master Degrees Awarded in the Last 5 Years: Chart.....	62
3.14 History of Degrees Awarded by Academic Level: 10 Years	63
3.15 Degrees Awarded by CIP and Major/Concentration: 5 Years.....	64
4. Faculty	
4.1 Faculty Profile	67
4.2 Faculty Credit Hour Production by Course Level	68
4.3 Employee Profile by EEOC.....	69
5. Revenues and Expenditures	
5.1 Summary of Budgeted E&G Revenues and Expenditures	70
5.2 2017-2018 E&G Revenues and Expenditures by Budget Entity: Chart.....	71
5.3 Authorization of State Gen. Obligation Bonds for IHL & MUW FY 1998-2017.....	72
MUW Accreditation Information.....	73
MUW Organizational Chart – Provost/Vice President for Academic Affairs	81
MUW Organizational Chart – Academic Units	82
APPENDIX: Explanation of Terms	83

First Published: February 15, 2018

Updated: March 20, 2018: Tables 2.3, 2.9, and 2.21

April 02, 2018: MUW Accreditation Information

MUW Organizational Chart



August 1, 2017

Mississippi University for Women

Vision, Mission and Guiding Principles

Vision

Building on its long tradition of excellence in liberal arts and professional education, as well as its historic focus on academic and leadership development for women, Mississippi University for Women will continue to be a university that prepares both women and men for successful lives by providing a high-quality education in a personalized learning environment.

Mission

Mississippi University for Women (MUW), a public institution since 1884, provides high quality undergraduate and graduate education for women and men in a variety of liberal arts and professional programs, while maintaining its historic commitment to academic and leadership development for women. MUW emphasizes a personalized learning environment in all of its educational programs, which are offered through the College of Arts, Sciences, and Education, College of Business and Professional Studies, and College of Nursing and Health Sciences. MUW delivers selected programs and courses through distance education formats to provide educational opportunities throughout Mississippi and the United States, while addressing the unique educational and public service needs of northeast Mississippi and adjoining counties in northwest Alabama. MUW supports research, scholarship, and creativity to enhance faculty development and student learning and to advance knowledge in the disciplines offered by the university.

Revised October 19, 2017

Guiding Principles

MUW provides high-quality instructional programs that emphasize teaching and learning. With faculty and staff of the highest caliber, MUW is dedicated to providing a campus environment that encourages lifelong learning, strong career preparation, and personal growth. Graduates are expected to have skills in communication, technology, and critical thinking, as well as an awareness of self, gender-related issues, cultural diversity, and responsible citizenship.

MUW is student oriented. MUW provides small classes and emphasizes personalized student attention, so that each student will have the opportunity to succeed. MUW offers a student-life program that stimulates learning and leadership development.

MUW values research, scholarship, and creativity. While MUW is primarily a teaching institution, the university supports research, scholarship, and creativity to enhance the professional development of faculty and staff in order to better prepare students.

MUW is committed to diversity among its faculty, staff, and students. The faculty, staff, and students of MUW represent the global society in which we live. MUW believes that diversity allows students to grow in their understanding of self and others.

MUW endorses sound organizational principles and is committed to operational efficiency, collaborative strategic planning, institutional effectiveness, and creative problem solving.

MUW meets regional, state, and national needs for higher education. The University responds to the needs of the local community by providing cultural activities; programs for intellectual, professional, and social development; and by assisting in economic development. MUW extends its outreach to the state and nation using multiple delivery methods, including the internet and other advanced systems.

MUW is committed to public service. MUW forms partnerships with businesses, as well as with educational, governmental, public service, and charitable organizations, to create opportunities that provide economic and social advantages for the institution, community, and region.

Approved by the Mississippi IHL Board on January 15, 2004

Mississippi University for Women

Strategic Priorities and Goals: 2016-2021

The University will cultivate a culture of Advancement Excellence to strengthen engagement among its constituencies by:

- Creating a culture of giving
- Establishing and maintaining affinity groups
- Fostering pride in University events and private giving
- Increasing awareness of university programs and strengths

The University will promote Regional Stewardship through partnerships across campus and the region by:

- Cultivating collaborations that increase health and well-being
- Providing outreach to underserved populations
- Strengthening and expanding K-12 partnerships
- Contributing to the creative economy
- Forging meaningful and engaged partnerships that provide real-life experiences for students

The University will foster a 21st Century learning environment by:

- Enhancing and effectively utilizing advanced instructional technologies
- Broadening educational opportunities and programs for the diverse student body
- Maintaining, enhancing and expanding international partnerships
- Increasing emphasis on diversity of faculty and staff
- Cultivating communities to create opportunities for academic engagement
- Fostering leadership development and a commitment to a safe ethical environment
- Enhancing business processes and the campus infrastructure, ensuring continuing financial sustainability

The University will cultivate a comprehensive approach that enhances retention, Completion and student success by:

- Enhancing student advising, mentoring, and support services
- Recruiting a diverse student body to ensure a vital university community
- Providing resources to assist students with achieving and maintaining financial stability
- Providing academic programs to meet the needs of today's student and workforce

MUW Profile

- Mississippi University for Women has been recognized by U.S. News & World Report. The W was listed 19th among the public Southern regional institutions.
- Mississippi University for Women ranked No. 26 in national public masters universities and No. 53 overall by Washington Monthly magazine as a Best Bang for the Buck

MUW Employees

For the fifth year in a row, Mississippi University for Women has been named one of the best colleges in the nation to work for, according to a survey by The Chronicle of Higher Education. It also was the fourth consecutive year for The W to be named to the prestigious Honor Roll.

MUW has approximately 304 full-time employees.

Approximately 70% of full-time employees are female.

Approximately 30% of full-time employees are male.

Approximately 19% of full-time employees are minorities.

MUW has approximately 105 part-time employees.

MUW is an affirmative action/equal opportunity institution.

Student Fees: Academic Year 2017-2018

Undergraduate

Semester Hour \$ 275.59 (In-state)
Semester Hour \$ 756.47 (Out-of-state)
Including a \$4.17 Capital Improvement Fee

Graduate

Semester Hour \$ 367.45 (In-state)
Semester Hour \$ 1,008.62 (Out-of-state)
Including a \$5.56 Capital Improvement Fee

Grounds and Buildings

The campus covers more than 114 acres within the historic district of central Columbus, MS. Twenty-three of more than 60 buildings are listed on the National Register of Historic Places.

Fall 2017 Profile

Fall 2017	Fall 2016	% Change	Category - University
2,789	2,956	-5.6%	Total Unduplicated Headcount
2,403	2,479	-3.1%	Total FTE
2,230	2,242	-0.5%	Full-time
559	714	-21.7%	Part-time
2,241	2,401	-6.7%	Gender: female
548	555	-1.3%	Gender: male
960	998	-3.8%	Race/Ethnic: African-American/black.
1,662	1,721	-3.4%	Race/Ethnic: white
167	237	-29.5%	Race/Ethnic: other
2,346	2,520	-6.9%	Citz/Residency: domestic/MS
77	77		<i>MS Counties Represented</i>
365	285	28.1%	Citz/Residency: domestic/US States (Non MS)
30	29		<i>US States Represented (Non MS)</i>
78	151	-48.3%	Citz: International
15	12		<i>Countries Represented</i>
837	853	-1.9%	Online Enrollment (Only)
989	1,173	-15.7%	Face-to-Face Enrollment (Only)
963	930	3.5%	Mixed Enrollment
1,944	2,023	-3.9%	Age: Traditional <= 24
845	933	-9.4%	Age: Non-Traditional >=25
24.7	24.5		Age: Average
2,577	2,745	-6.1%	Undergraduate Headcount
212	211	0.5%	Graduate Headcount
680	721	-5.7%	College: Arts, Sciences, & Education ¹
566	530	6.8%	College: Business & Professional Studies ¹
1,236	1,240	-0.3%	College: Nursing & Health Sciences ¹
307	465	-34.0%	College: University
569	551	3.3%	Dorm
2,220	2,405	-7.7%	Commuter

¹The fall 2016 college structure was converted to the fall 2017 structure.

Fall 2016 to Fall 2017	Fall 2015 to Fall 2016	Category - FT-FT Bachelor's Retention
59.4% (165 of 278)	59.2% (138 of 233)	1 Year Retention Rate - FT-FT, Bach. Freshmen
80.8% (488 of 604)	79.3% (440 of 555)	1 Year Retention/Grad Rate - FT-FT, Bach. Transfer
39.6% (239)	39.3% (218)	1 Year Retention Rate - FT-FT, Bach. Transfer
41.2% (249)	40.0% (222)	1 Year Grad Rate - FT-FT, Bach. Transfer
Fall 2011 to Fall 2017	Fall 2010 to Fall 2016	Category - FT-FT Bachelor's Graduation
44.3% (77 of 174)	47.4% (91 of 192)	6 Year Graduation Rate - FT-FT, Bach. Freshmen
72.3% (358 of 495)	71.2% (306 of 430)	6 Year Graduation Rate - FT-FT, Bach. Transfer

Fall 2017 Profile

Fall 2017	Fall 2016	% Change	Category - New Students
946	980	-3.5%	New Students (Freshman & Transfer)
217	290	-25%	Freshman Cohort Total
8%	10%		<i>Percent of Total Headcount</i>
217	278	-21.9%	FT-FT, FR Bachelor's Degree Seeking
0	0	-	FT-PT, FR Bachelor's Degree Seeking
0	11	-100.0%	FT-FT, FR Other Degree Seeking
0	1	-100.0%	FT-PT, FR Other Degree Seeking
216	192	12.5%	Freshman Cohort Citizenship: Domestic
1	98	-99.0%	Freshman Cohort Citizenship: International
21.2	21.5	-1.5%	FT-FT, FR Bachelor's - ACT Composite Average
21.2	22.2	-4.7%	FT-FT, FR Bachelor's - ACT & Conv. SAT Composite Avg.
729	690	6%	Transfer Cohort Total
26%	23%		<i>Percent of Total Headcount</i>
651	604	7.8%	FT-FT, TR Bachelor's Degree Seeking
29	28	3.6%	FT-PT, TR Bachelor's Degree Seeking
46	48	-4.2%	FT-FT, TR Other Degree Seeking
3	10	-70.0%	FT-PT, TR Other Degree Seeking
279	326	-14.4%	Transfer Cohort Major: RN/BSN Tupelo

AY 2017	AY 2016	% Change	Category - Degrees Awarded
882	864	2.1%	Total Degrees Awarded
41	41	0.0%	Degrees Awarded: ASN
731	739	-1.1%	Degrees Awarded: BACH
104	83	25.3%	Degrees Awarded: MASTER
6	1	500.0%	Degrees Awarded: DNP

FY 2017	FY 2016	% Change	Category - IPEDS HC & FTE
3,465	3,256	6.4%	FY IPEDS Headcount
3,200	2,981	7.3%	Undergraduate Headcount
265	275	-3.6%	Graduate Headcount
2,718	2,574	5.6%	FY IPEDS FTE
2,521	2,374	6.2%	Undergraduate FTE
197	200	-1.5%	Graduate FTE

Fall 2017	Fall 2016	Category - IPEDS Student Faculty Ratio
14 to 1	14 to 1	Student to Faculty FTE Ratio



	This Institution		University System Average	
	Number	Percent	Number	Percent
Student Enrollment				
Total Headcount Enrollment	3,621		11,931	
Undergraduate	3,318	91.6%	9,406	78.8%
Graduate & Professional	303	8.4%	2,525	21.2%
Total Full-Time Equivalent (FTE) Enrollment	2,574		9,581	
Undergraduate	2,374	92.2%	7,945	82.9%
Graduate & Professional	200	7.8%	1,636	17.1%
New Undergraduate Students (Percent of Total Undergraduates)	1,071	32.3%	2,719	28.9%
Entering Freshmen	273	8.2%	1,526	16.2%
Entering Transfers - MS Community Colleges	650	19.6%	857	9.1%
Entering Transfers - All Other Institutions	148	4.5%	336	3.6%
Undergraduate Enrollment in High-Need Disciplines (Percent of Total Undergraduates)				
Science, Technology, Engineering, Mathematics (STEM)	148	4.5%	2,360	25.1%
Education (Including Non-Teaching Areas)	152	4.6%	768	8.2%
Nursing (All Undergraduate Levels)	1,254	37.8%	754	8.0%

Degrees Awarded				
Undergraduate Degrees per 100 Undergraduate FTE Enrollment	32.5	--	20.6	--
Total Degrees Awarded	864		2,138	
Certificate	0	0.0%	11	0.5%
Associate	41	4.7%	8	0.4%
Baccalaureate	739	85.5%	1,565	73.2%
Graduate and Professional	84	9.7%	554	25.9%
Undergraduate Degrees in High-Need Disciplines (Percent of Total Undergraduates)				
Science, Technology, Engineering, Mathematics (STEM)	20	2.6%	336	21.2%
Education (Including Non-Teaching Areas)	15	1.9%	132	8.3%
Nursing (All Undergraduate Levels)	476	61.0%	139	8.8%
Graduate Degrees in STEM Disciplines (Percent of Total Graduate Degrees)	--	--	100	18.1%

College Readiness				
Average ACT Score of Entering Freshmen, Fall 2015	21.5	--	22.9	--
Students enrolled in One or More Intermediate Courses, Fall 2015	138		440	
Students enrolled in intermediate math during first year	83	60.1%	203	46.1%
Students enrolled in intermediate English/reading during first year	24	17.4%	114	25.9%
Students enrolled in both math and English/reading during first year	31	22.5%	123	28.0%
Fall 2013 intermediate math students completing math gateway course in 2 years	--	38.1%	--	37.1%
Fall 2013 intermediate English students completing English gateway course in 2 years	--	54.4%	--	61.0%

Student Progress				
Percent of full-time students completing 24 credit hours within one academic year	--	76.0%	--	73.5%
Percent of part-time students completing 12 credit hours within one academic year	--	29.7%	--	45.2%
One-Year Retention Rates for Entering Full-Time Freshmen, Fall 2014 returning in Fall 2015	--	74.6%	--	80.0%
Graduation Rates of First-time, full-time Freshman Cohort, Fall 2008	239		1,095	
Cohort students graduating within 4 years (100% of normal time)	54	22.6%	302	27.6%
Cohort students graduating within 6 years (150% of normal time)	98	41.0%	574	52.4%
Cohort students graduating within 8 years (200% of normal time)	103	43.1%	604	55.2%

Research				
External Research Dollars – All Sources (in Millions)	\$4.9	--	\$52.8	--
Percent of External Research from Federal Sources	2.5%	--	76.7%	--
Number of Research Projects Supported	5	--	305	--

Other University Variables				
Percent of median family income required to cover tuition and fees	31.2%	--	36.3%	--
Total state expenditures per total FTE student	\$13,970	--	\$15,249	--
Percent of Full-Time Instructional Faculty with Terminal Degree, Fall 2015	69.3%	--	78.6%	--



Academic Year 2015-16 (AY2015-16) – The Institutional Profile is for the 2015-16 academic year and includes the Summer 2015, Fall 2015, and Spring 2016 terms. Some reporting terms may vary depending on the length of time for each metric.

University System Average – The university system average is based on eight institutions and includes the Medical Center with the University of Mississippi in most instances. Figures including UMMC data are denoted with an asterisk (*).

Total Headcount Enrollment – Total headcount enrollment figures are unduplicated for the academic year. Academic level and degree objective are for enrollment are based on the last term of attendance for the year. [Source: IHLMIS]

Total Full-Time Equivalent (FTE) Enrollment – Total full-time equivalent enrollment figures are based on undergraduate and graduate credit hour activity over a 12-month period. Calculation uses a trailing summer in accordance with IPEDS. [Source: Federal IPEDS]

Entering Freshmen – Entering freshmen figures are based on an unduplicated count of entering freshmen at any point during the academic year. [Source: IHLMIS]

Entering Transfers – Entering transfer figures are based on an unduplicated count of entering transfer students at any point during the academic year from Mississippi's community colleges and all other postsecondary institutions. [Source: IHLMIS]

Science, Technology, Engineering, Mathematics (STEM) Enrollment & Degrees – STEM enrollment includes the number of undergraduate students majoring in science, technology, engineering, and mathematics as defined by the National Science Foundation (NSF). A complete listing of the NSF-STEM majors can be found at <http://www.ice.gov/doclib/sevis/pdf/stem-list.pdf> [Source: IHLMIS]

Education (Including Non-Teaching Areas) and Nursing Enrollment (All Undergraduate Levels) Enrollment & Degrees - Education enrollment includes the number of undergraduate students majoring in any education discipline according to the 13 CIP code. This includes teaching and non-teaching education majors. Nursing enrollment includes the number of undergraduate students majoring in any nursing discipline. [Source: IHLMIS]

Undergraduate Degrees per 100 Undergraduate FTE Enrollment – Figures indicate the number of undergraduate degrees awarded per 100 undergraduate FTE students. Undergraduate degrees include certificates, associates, and baccalaureate degrees. Undergraduate FTE is based on an four-year average of annual undergraduate FTE figures. [Source: Degrees – IHLMIS; Student FTE – Federal IPEDS]

Intermediate Enrollment – It should be noted that institutions have varying academic policies regarding intermediate enrollment. Intermediate enrollment includes the number of students taking one or more Intermediate courses. The three intermediate groups (math only, English only, and both math and English) are treated as three separate groups. Figures are based on Fall term data and exclude the Academic Support Lab. [Source: IHLMIS]

Student Progress – Full-time status includes students taking 12 or more hours during the fall term while part-time students include students taking less than 12 hours during the fall term. Students earning zero credit hours for the entire academic year were excluded from the metric since most were not enrolled for the entire academic year. [Source: IHLMIS]

Retention Rates – Retention rates reflect the percentage of first-time, full-time entering freshmen during the Fall 2014 term who return for the Fall 2015 term. [Source: Federal IPEDS]

Graduate Rates – Graduation rates reflect the percentage of first-time, full-time freshmen during the Fall 2008 term who graduated at 4-year (100% of normal time), 6-year (150% of normal time), and 8-year (200% of normal time) intervals. [Source: Federal IPEDS]

External Research Dollars – External funds provided to the university by a variety of sources (primarily federal) for the purpose of advancing the research mission of the institution as well as contributing to teaching and service missions. [Source: IHL Universities]

Percent of Median Family Income Required to Cover Tuition and Fees – The median household income figure (\$39,665) was derived from the American Community Survey (ACS) conducted by the U.S. Census. The tuition and fee figures reflect 2015-16 tuition and fees with average room (for double occupancy) and board (average plan) charges approved by the IHL Board. [Sources: U.S. Census & IHL Finance]

State Expenditures per Total FTE Student – State expenditures for FY2016 were calculated by combining on-campus and off-campus expenditures minus capital expense funds using institutional MBR reports. FTE student figures were derived using 12-month figures from IPEDS. [Source: Federal IPEDS and IHL Finance MBR Reports]

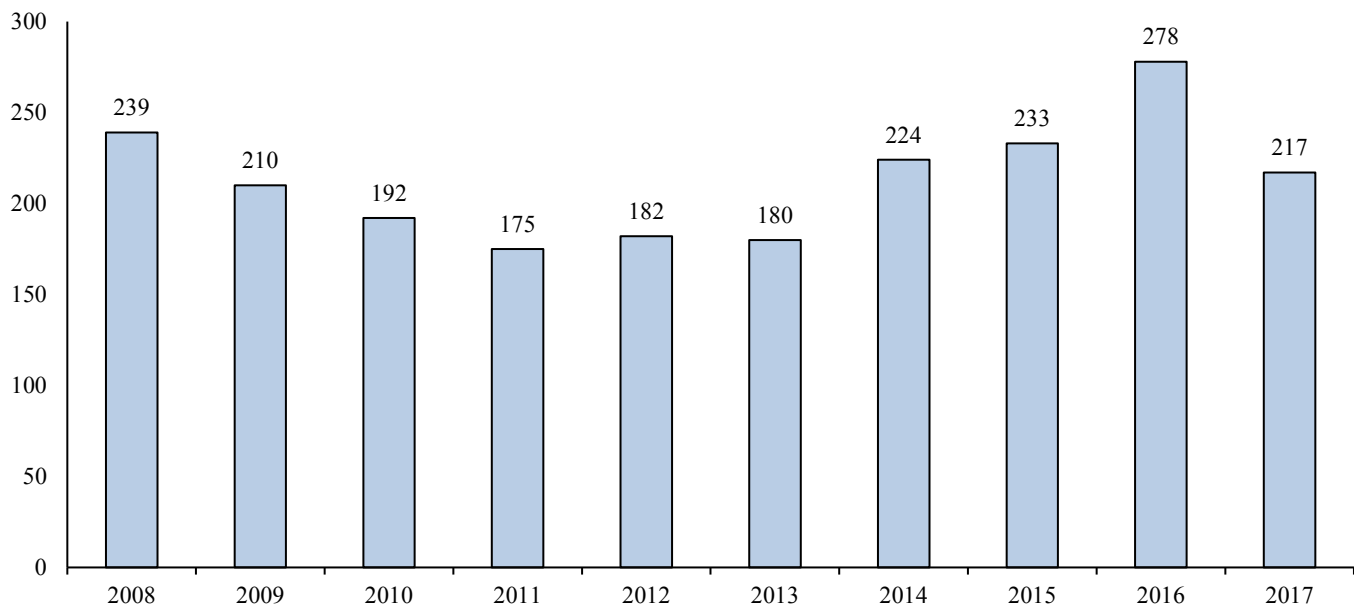
Instructional Faculty with Terminal Degree – Figures represent the percentage of full-time instructional faculty with a terminal or first-professional degree. Terminal degrees also include master's degrees in fine arts (M.F.A.), social work (M.S.W.) and library science (M.L.S.). [Source: IHLMIS]

First-Time Freshman: Enrollment & Funnel Rates | Table 1.1
Fall 2013 - 2017

First-Time Freshman	2013	2014	2015	2016	2017	5 Yr # Ch	5 Yr %Ch
Inquiries	5,793	9,036	5,219	6,524	6,609	816	14%
Conversion ratio from inquiry to application	22%	8%	13%	11%	11%		
Applicants	1,274	720	671	750	708	-566	-44%
Admit Rate from application to admission	43%	94%	96%	99%	98%		
Admitted	554	674	645	741	694	140	25%
Yield rate from admission to enrollment	33%	36%	38%	39%	31%		
Of those Enrolled							
First-time, Full-time Bachelor's Degree Seeking	180	224	233	278	217	37	21%
First-time, Part-time Bachelor's Degree Seeking	1	1	0	0	0	-1	-100%
First-time, Full-time Other Degree Seeking	2	18	13	11	0	-2	-100%
First-time, Part-time Other Degree Seeking	0	0	0	1	0	0	0%
Total Enrolled Degree Seeking Freshmen	183	243	246	290	217	34	19%

Starting fall 2014, the definition of an applicant was changed to match IHL and IPEDS.
 Cohort totals include the students excluded from retention.

First-time, Full-time Bachelor's Degree Seeking Freshman Headcount | Table 1.2
Fall 2008 - 2017



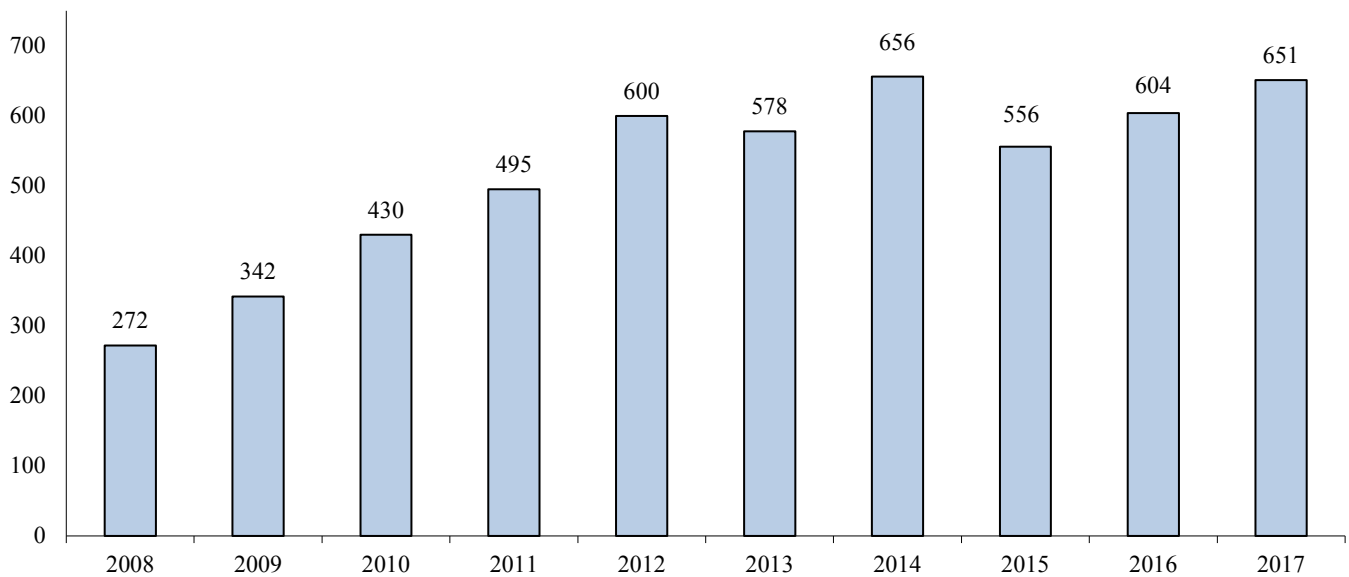
The freshman cohort totals include the students excluded from retention.

First-Time Transfer: Enrollment & Funnel Rates | Table 1.3
Fall 2013 - 2017

First-Time Transfer	2013	2014	2015	2016	2017	5 Yr # Ch	5 Yr %Ch
Inquiries	2,229	1,731	2,009	2,210	2,152	-77	-3%
Conversion ratio from inquiry to application	84%	62%	58%	53%	54%		
Applicants	1,876	1,065	1,163	1,163	1,168	-708	-38%
Admit Rate from application to admission	56%	93%	97%	98%	98%		
Admitted	1,043	989	1,124	1,134	1,141	98	9%
Yield rate from admission to enrollment	65%	77%	56%	61%	64%		
Of those Enrolled							
First-time, Full-time Bachelor's Degree Seeking	578	656	556	604	651	73	13%
First-time, Part-time Bachelor's Degree Seeking	42	37	26	28	29	-13	-31%
First-time, Full-time Other Degree Seeking	59	64	51	48	46	-13	-22%
First-time, Part-time Other Degree Seeking	3	2	1	10	3	0	0%
Total Enrolled Degree Seeking Transfers	682	759	634	690	729	47	7%

Starting fall 2014, the definition of an applicant was changed to match IHL and IPEDS.
 Cohort totals include the students excluded from retention.

First-time, Full-time Bachelor's Degree Seeking Transfer Headcount | Table 1.4
Fall 2008 - 2017



The transfer cohort totals include the students excluded from retention.
 Due to a change in IPEDS reporting, the transfer cohorts from fall 2007-2014 have been redefined to include new transfers from the preceding summer. For fall 2015 forward, the transfer cohort will include summer transfers.

First-time, Full-time Bachelor's Degree Seeking Freshman ACT & SAT Scores | Table 1.5

Fall 2013 - 2017

Fall 2013 ACT	Comp	Math	English	Reading	Science
25th percentile	18	17	18	18	18
50th percentile	20	19	21	21	21
75th percentile	24	22	25	26	23
Average	21.1	19.4	21.6	22.2	20.6
Minimum	14	13	9	11	11
Maximum	31	29	35	36	30

Fall 2014 ACT	Comp	Math	English	Reading	Science
25th percentile	18	16	18	18	18
50th percentile	20	18	20	21	20
75th percentile	23	22	24	26	23
Average	20.8	19.2	21.2	22.0	20.4
Minimum	13	14	12	11	9
Maximum	31	29	35	36	31

Fall 2014 ACT & SAT	ACT & Conv SAT Comp¹	Conv SAT Comp	SAT VERB	SAT MATH
25th percentile	18	23	450	583
50th percentile	21	24	475	620
75th percentile	24	26	548	658
Average	21.2	24.1	493.3	617.3
Minimum	13	21	330	490
Maximum	31	30	720	730

Fall 2015 ACT	Comp	Math	English	Reading	Science
25th percentile	18	16	18	19	18
50th percentile	20	19	21	21	20
75th percentile	24	22	25	25	23
Average	21.1	19.3	21.6	22.0	20.7
Minimum	12	12	7	13	13
Maximum	32	28	35	34	33

Fall 2015 ACT & SAT	ACT & Conv SAT Comp¹	Conv SAT Comp	SAT VERB	SAT MATH
25th percentile	19	21	410	580
50th percentile	21	23	430	620
75th percentile	24	25	490	660
Average	21.6	23.0	450.3	618.8
Minimum	12	18	350	400
Maximum	32	29	650	760

Fall 2016 ACT	Comp	Math	English	Reading	Science
25th percentile	18	16	18	18	18
50th percentile	21	19	22	22	21
75th percentile	25	23	27	27	24
Average	21.5	19.6	22.3	22.5	21.2
Minimum	14	12	10	10	12
Maximum	32	35	35	35	33

Fall 2016 ACT & SAT	ACT & Conv SAT Comp¹	Conv SAT Comp	SAT VERB	SAT MATH
25th percentile	19	22	430	580
50th percentile	23	23	470	620
75th percentile	25	25	503	650
Average	22.2	23.5	472.2	615.7
Minimum	14	15	350	440
Maximum	32	29	670	780

Fall 2017 ACT	Comp	Math	English	Reading	Science
25th percentile	18	17	18	19	18
50th percentile	21	19	21	22	21
75th percentile	23	23	24	24	23
Average	21.2	19.7	21.5	22.0	20.9
Minimum	14	14	7	13	10
Maximum	30	28	35	36	34

Fall 2017 ACT & SAT	ACT & Conv SAT Comp¹	Conv SAT Comp	SAT VERB	SAT MATH
25th percentile	18	23	540	530
50th percentile	21	25	540	560
75th percentile	24	28	590	610
Average	21.2	25.3	556.7	566.7
Minimum	14	23	540	530
Maximum	30	28	590	610

¹Includes both the ACT Composite Score and Converted SAT to ACT Composite Score

First-time, Full-time Bachelor's Degree Seeking Freshman Cohort Retention & Graduation Rates | Table 1.6

Fall 2009 Cohort	Fall 2009	Fall 2010		Fall 2011		Fall 2012		Fall 2013		Fall 2014		Fall 2015		Fall 2016		Fall 2017	
Enrolled	206	154	74.8%	126	61.2%	111	53.9%	50	24.3%	17	8.3%	6	2.9%	1	0.5%	0	0.0%
Graduated		0	0.0%	0	0.0%	1	0.5%	56	27.2%	89	43.2%	101	49.0%	106	51.5%	107	51.9%
Total	206	154	74.8%	126	61.2%	112	54.4%	106	51.5%	106	51.5%	107	51.9%	107	51.9%	107	51.9%
Fall 2010 Cohort	Fall 2010	Fall 2011		Fall 2012		Fall 2013		Fall 2014		Fall 2015		Fall 2016		Fall 2017		Fall 2018	
Enrolled	192	144	75.0%	117	60.9%	107	55.7%	51	26.6%	13	6.8%	5	2.6%	3	1.6%		
Graduated		0	0.0%	0	0.0%	0	0.0%	50	26.0%	84	43.8%	91	47.4%	94	49.0%		
Total	192	144	75.0%	117	60.9%	107	55.7%	101	52.6%	97	50.5%	96	50.0%	97	50.5%		
Fall 2011 Cohort	Fall 2011	Fall 2012		Fall 2013		Fall 2014		Fall 2015		Fall 2016		Fall 2017		Fall 2018		Fall 2019	
Enrolled	174	128	73.6%	101	58.0%	93	53.4%	41	23.6%	12	6.9%	5	2.9%				
Graduated		0	0.0%	0	0.0%	3	1.7%	44	25.3%	70	40.2%	77	44.3%				
Total	174	128	73.6%	101	58.0%	96	55.2%	85	48.9%	82	47.1%	82	47.1%				
Fall 2012 Cohort	Fall 2012	Fall 2013		Fall 2014		Fall 2015		Fall 2016		Fall 2017		Fall 2018		Fall 2019		Fall 2020	
Enrolled	182	144	79.1%	107	58.8%	103	56.6%	47	25.8%	16	8.8%						
Graduated		0	0.0%	0	0.0%	0	0.0%	47	25.8%	76	41.8%						
Total	182	144	79.1%	107	58.8%	103	56.6%	94	51.6%	92	50.5%						
Fall 2013 Cohort	Fall 2013	Fall 2014		Fall 2015		Fall 2016		Fall 2017		Fall 2018		Fall 2019		Fall 2020		Fall 2021	
Enrolled	180	125	69.4%	97	53.9%	86	47.8%	40	22.2%								
Graduated		0	0.0%	0	0.0%	2	1.1%	44	24.4%								
Total	180	125	69.4%	97	53.9%	88	48.9%	84	46.7%								
Fall 2014 Cohort	Fall 2014	Fall 2015		Fall 2016		Fall 2017		Fall 2018		Fall 2019		Fall 2020		Fall 2021		Fall 2022	
Enrolled	224	167	74.6%	119	53.1%	109	48.7%										
Graduated		0	0.0%	0	0.0%	5	2.2%										
Total	224	167	74.6%	119	53.1%	114	50.9%										
Fall 2015 Cohort	Fall 2015	Fall 2016		Fall 2017		Fall 2018		Fall 2019		Fall 2020		Fall 2021		Fall 2022		Fall 2023	
Enrolled	233	138	59.2%	123	52.8%												
Graduated		0	0.0%	0	0.0%												
Total	233	138	59.2%	123	52.8%												
Fall 2016 Cohort	Fall 2016	Fall 2017		Fall 2018		Fall 2019		Fall 2020		Fall 2021		Fall 2022		Fall 2023		Fall 2024	
Enrolled	278	165	59.4%														
Graduated		0	0.0%														
Total	278	165	59.4%														

Students receiving more than one degree are only counted once. This table does not count ASN degrees as completers.

The following first-time, full-time freshman cohorts have deceased students excluded from retention: 2009 - 4 students, 2011 - 1 student.

First-time, Full-time Bachelor's Degree Seeking Transfer Cohort Retention & Graduation Rates | Table 1.7

Fall 2009 Cohort	Fall 2009	Fall 2010		Fall 2011		Fall 2012		Fall 2013		Fall 2014		Fall 2015		Fall 2016		Fall 2017	
Enrolled	342	220	64.3%	121	35.4%	47	13.7%	19	5.6%	7	2.0%	2	0.6%	5	1.5%	0	0.0%
Graduated		39	11.4%	128	37.4%	198	57.9%	224	65.5%	234	68.4%	241	70.5%	246	71.9%	250	73.1%
Total	342	259	75.7%	249	72.8%	245	71.6%	243	71.1%	241	70.5%	243	71.1%	251	73.4%	250	73.1%
Fall 2010 Cohort	Fall 2010	Fall 2011		Fall 2012		Fall 2013		Fall 2014		Fall 2015		Fall 2016		Fall 2017		Fall 2018	
Enrolled	430	221	51.4%	115	26.7%	39	9.1%	9	2.1%	4	0.9%	1	0.2%	0	0.0%		
Graduated		95	22.1%	192	44.7%	262	60.9%	297	69.1%	302	70.2%	306	71.2%	306	71.2%		
Total	430	316	73.5%	307	71.4%	301	70.0%	306	71.2%	306	71.2%	307	71.4%	306	71.2%		
Fall 2011 Cohort	Fall 2011	Fall 2012		Fall 2013		Fall 2014		Fall 2015		Fall 2016		Fall 2017		Fall 2018		Fall 2019	
Enrolled	495	224	45.3%	102	20.6%	43	8.7%	15	3.0%	7	1.4%	6	1.2%				
Graduated		155	31.3%	263	53.1%	323	65.3%	341	68.9%	353	71.3%	358	72.3%				
Total	495	379	76.6%	365	73.7%	366	73.9%	356	71.9%	360	72.7%	364	73.5%				
Fall 2012 Cohort	Fall 2012	Fall 2013		Fall 2014		Fall 2015		Fall 2016		Fall 2017		Fall 2018		Fall 2019		Fall 2020	
Enrolled	600	229	38.2%	112	18.7%	34	5.7%	21	3.5%	8	1.3%						
Graduated		199	33.2%	323	53.8%	400	66.7%	425	70.8%	443	73.8%						
Total	600	428	71.3%	435	72.5%	434	72.3%	446	74.3%	451	75.2%						
Fall 2013 Cohort	Fall 2013	Fall 2014		Fall 2015		Fall 2016		Fall 2017		Fall 2018		Fall 2019		Fall 2020		Fall 2021	
Enrolled	578	217	37.5%	100	17.3%	28	4.8%	11	1.9%								
Graduated		240	41.5%	352	60.9%	423	73.2%	444	76.8%								
Total	578	457	79.1%	452	78.2%	451	78.0%	455	78.7%								
Fall 2014 Cohort	Fall 2014	Fall 2015		Fall 2016		Fall 2017		Fall 2018		Fall 2019		Fall 2020		Fall 2021		Fall 2022	
Enrolled	655	246	37.6%	131	20.0%	42	6.4%										
Graduated		272	41.5%	397	60.6%	475	72.5%										
Total	655	518	79.1%	528	80.6%	517	78.9%										
Fall 2015 Cohort	Fall 2015	Fall 2016		Fall 2017		Fall 2018		Fall 2019		Fall 2020		Fall 2021		Fall 2022		Fall 2023	
Enrolled	555	218	39.3%	97	17.5%												
Graduated		222	40.0%	348	62.7%												
Total	555	440	79.3%	445	80.2%												
Fall 2016 Cohort	Fall 2016	Fall 2017		Fall 2018		Fall 2019		Fall 2020		Fall 2021		Fall 2022		Fall 2023		Fall 2024	
Enrolled	604	239	39.6%														
Graduated		249	41.2%														
Total	604	488	80.8%														

Due to a change in IPEDS reporting, the 2007 - 2014 transfer cohorts have been redefined to include new transfers from the preceding summer.

Students receiving more than one degree are only counted once. This table does not count ASN degrees as completers.

The following first-time, full-time transfer cohorts have deceased students excluded from retention: 2014 - 1 student, 2015 - 1 student.

Two administratively withdrawn students were removed from the 2010 cohort. One student was removed from the 2011 cohort after prior academic history at MUW was discovered.

Unduplicated Headcount and FTE Enrollment: Fall Terms | Table 2.1
Fall 2008 - 2017

	Undup Headcount	% Ch Yr Ago	Total Cr. Hrs.	% Ch Yr Ago	Total FTE	% Ch Yr Ago
Fall 2008	2,365	-	28,754	-	1,937	-
Fall 2009	2,476	4.69%	30,389	5.69%	2,054	6.04%
Fall 2010	2,587	4.48%	32,344	6.43%	2,183	6.26%
Fall 2011	2,661	2.86%	32,721	1.17%	2,207	1.11%
Fall 2012	2,650	-0.41%	33,687	2.95%	2,268	2.77%
Fall 2013	2,629	-0.79%	33,159	-1.57%	2,240	-1.24%
Fall 2014	2,696	2.55%	34,131	2.93%	2,300	2.68%
Fall 2015	2,673	-0.85%	33,511	-1.82%	2,263	-1.61%
Fall 2016	2,956	10.59%	36,708	9.54%	2,479	9.54%
Fall 2017	2,789	-5.65%	35,575	-3.09%	2,403	-3.07%

Duplicated Campus Headcount | Table 2.2
Fall 2013 - 2017

	Main Campus Headcount	# Ch Yr Ago	% Ch Yr Ago	Tupelo Campus Headcount	# Ch Yr Ago	% Ch Yr Ago
Fall 2013	2,275	-	-	447	-	-
Fall 2014	2,300	25	1.10%	499	52	11.63%
Fall 2015	2,385	85	3.70%	421	-78	-15.63%
Fall 2016	2,610	225	9.43%	463	42	9.98%
Fall 2017	2,480	-130	-4.98%	424	-39	-8.42%

Students enrolled on Main campus may also be enrolled at the same time on Tupelo campus and vice versa.
 Students enrolled in Italy, Hinds CC and Gulf CC count as Main campus

**Unduplicated Headcount and FTE Enrollment: Spring Terms | Table 2.3
Spring 2009 - 2018**

	Undup Headcount	% Ch Yr Ago	Total Cr. Hrs.	% Ch Yr Ago	Total FTE	% Ch Yr Ago
Spring 2009	2,283	-	27,284	-	1,843	-
Spring 2010	2,433	6.57%	28,846	5.72%	1,950	5.85%
Spring 2011	2,541	4.44%	31,008	7.49%	2,092	7.24%
Spring 2012	2,536	-0.20%	31,056	0.15%	2,095	0.17%
Spring 2013	2,596	2.37%	32,358	4.19%	2,180	4.05%
Spring 2014	2,507	-3.43%	30,992	-4.22%	2,093	-3.99%
Spring 2015	2,558	2.03%	31,908	2.96%	2,151	2.77%
Spring 2016	2,574	0.63%	31,922	0.04%	2,156	0.25%
Spring 2017	2,718	5.59%	33,326	4.40%	2,251	4.37%
Spring 2018	2,648	-2.58%	33,060	-0.80%	2,232	-0.82%

**Unduplicated Headcount and FTE Enrollment: Summer Terms | Table 2.4
Summer 2008 - 2017**

	Undup Headcount	% Ch Yr Ago	Total Cr. Hrs.	% Ch Yr Ago	Total FTE	% Ch Yr Ago
Summer 2008	1,040	-	6,310	-	439	-
Summer 2009	1,144	10.00%	7,650	21.24%	534	21.49%
Summer 2010	1,300	13.64%	10,070	31.63%	695	30.21%
Summer 2011	1,434	10.31%	12,188	21.03%	834	20.04%
Summer 2012	1,338	-6.69%	11,177	-8.30%	765	-8.27%
Summer 2013	1,245	-6.95%	10,085	-9.77%	692	-9.54%
Summer 2014	1,258	1.04%	11,375	12.79%	778	12.43%
Summer 2015	1,268	0.79%	11,639	2.32%	795	2.19%
Summer 2016	1,177	-7.18%	10,593	-8.99%	729	-8.29%
Summer 2017	1,142	-2.97%	10,334	-2.45%	708	-2.85%

Unduplicated Enrollment by Gender | Table 2.5

Fall 2008 - 2017

Fall	Female			Male			Total	
	#	% of Total	% Ch Yr Ago	#	% of Total	% Ch Yr Ago	#	% Ch Yr Ago
2008	1,984	83.9%	-	381	16.1%	-	2,365	-
2009	2,025	81.8%	2.1%	451	18.2%	18.4%	2,476	4.7%
2010	2,133	82.5%	5.3%	454	17.5%	0.7%	2,587	4.5%
2011	2,207	82.9%	3.5%	454	17.1%	0.0%	2,661	2.9%
2012	2,203	83.1%	-0.2%	447	16.9%	-1.5%	2,650	-0.4%
2013	2,154	81.9%	-2.2%	475	18.1%	6.3%	2,629	-0.8%
2014	2,192	81.3%	1.8%	504	18.7%	6.1%	2,696	2.5%
2015	2,155	80.6%	-1.7%	518	19.4%	2.8%	2,673	-0.9%
2016	2,401	81.2%	11.4%	555	18.8%	7.1%	2,956	10.6%
2017	2,241	80.4%	-6.7%	548	19.6%	-1.3%	2,789	-5.6%

Unduplicated Enrollment by Race/Ethnicity | Table 2.6

Fall 2008 - 2017

Fall	White			Black/ African-American			Other			Did Not Report		Total
	#	% of Total	% Ch Yr Ago	#	% of Total	% Ch Yr Ago	#	% of Total	% Ch Yr Ago	#	% of Total	
2008	1,421	60.1%	-	846	35.8%	-	98	4.1%	-	0	0.0%	2,365
2009	1,459	58.9%	2.7%	910	36.8%	7.6%	107	4.3%	9.2%	0	0.0%	2,476
2010	1,503	58.1%	3.0%	965	37.3%	6.0%	110	4.3%	2.8%	9	0.3%	2,587
2011	1,550	58.2%	3.1%	1,011	38.0%	4.8%	100	3.8%	-9.1%	0	0.0%	2,661
2012	1,557	58.7%	0.5%	993	37.5%	-1.8%	100	3.8%	0.0%	0	0.0%	2,650
2013	1,536	58.4%	-1.3%	970	36.9%	-2.3%	123	4.7%	23.0%	0	0.0%	2,629
2014	1,573	58.4%	2.4%	987	36.6%	1.8%	136	5.0%	10.6%	0	0.0%	2,696
2015	1,534	57.4%	-2.5%	965	36.1%	-2.2%	174	6.5%	27.9%	0	0.0%	2,673
2016	1,721	58.2%	12.2%	998	33.8%	3.4%	237	8.0%	36.2%	0	0.0%	2,956
2017	1,662	59.6%	-3.4%	960	34.4%	-3.8%	167	6.0%	-29.5%	0	0.0%	2,789

The "Other" category includes Hispanic/Latino, American Indian/Alaskan Native, Asian, Native Hawaiian/Pacific Islander, Multi-racial, and Non-resident Alien students.

Unduplicated Enrollment by Race/Ethnicity, Gender, & FT/PT Status | Table 2.7

Fall 2013 - 2017

Full-Time Status

	Black/African American			Other			White			Full-Time Total		
	Female	Male	Total	Female	Male	Total	Female	Male	Total	Female	Male	Total
Fall 2013	647	90	737	68	24	92	1,001	216	1,217	1,716	330	2,046
Fall 2014	688	103	791	77	27	104	1,024	230	1,254	1,789	360	2,149
Fall 2015	638	91	729	65	61	126	1,015	200	1,215	1,718	352	2,070
Fall 2016	704	99	803	125	75	200	1,053	186	1,239	1,882	360	2,242
Fall 2017	709	109	818	88	34	122	1,052	238	1,290	1,849	381	2,230

Part-Time Status

	Black/African American			Other			White			Part-Time Total		
	Female	Male	Total	Female	Male	Total	Female	Male	Total	Female	Male	Total
Fall 2013	206	27	233	17	14	31	215	104	319	438	145	583
Fall 2014	174	22	196	13	19	32	216	103	319	403	144	547
Fall 2015	191	45	236	26	22	48	220	99	319	437	166	603
Fall 2016	165	30	195	21	16	37	333	149	482	519	195	714
Fall 2017	121	21	142	27	18	45	244	128	372	392	167	559

University Total

	Black/African American			Other			White			Grand Total		
	Female	Male	Total	Female	Male	Total	Female	Male	Total	Female	Male	Total
Fall 2013	853	117	970	85	38	123	1,216	320	1,536	2,154	475	2,629
Fall 2014	862	125	987	90	46	136	1,240	333	1,573	2,192	504	2,696
Fall 2015	829	136	965	91	83	174	1,235	299	1,534	2,155	518	2,673
Fall 2016	869	129	998	146	91	237	1,386	335	1,721	2,401	555	2,956
Fall 2017	830	130	960	115	52	167	1,296	366	1,662	2,241	548	2,789

[1] The "Other" category includes Hispanic/Latino, American Indian/Alaskan Native, Asian, Native Hawaiian/Pacific Islander, Multi-racial, and Non-resident Alien students.

Unduplicated Enrollment and Credit Hour Production by FT/PT Status | Table 2.8

Fall 2008 - 2017

Unduplicated Fall Enrollment

Fall	Full-time					Part-time					Total
	Undergraduate		Graduate		Full-Time Total	Undergraduate		Graduate		Part-Time Total	
	#	% of Total	#	% of Total		#	% of Total	#	% of Total		
2008	1,666	70%	62	3%	1,728	527	22%	110	5%	637	2,365
2009	1,758	71%	97	4%	1,855	514	21%	107	4%	621	2,476
2010	1,881	73%	83	3%	1,964	513	20%	110	4%	623	2,587
2011	1,937	73%	82	3%	2,019	541	20%	101	4%	642	2,661
2012	2,009	76%	84	3%	2,093	494	19%	63	2%	557	2,650
2013	1,945	74%	101	4%	2,046	484	18%	99	4%	583	2,629
2014	2,065	77%	84	3%	2,149	462	17%	85	3%	547	2,696
2015	1,976	74%	94	4%	2,070	494	18%	109	4%	603	2,673
2016	2,116	72%	126	4%	2,242	629	21%	85	3%	714	2,956
2017	2,113	76%	117	4%	2,230	464	17%	95	3%	559	2,789

Fall Credit Hours by Student Level

Fall	Full-time					Part-time					Total
	Undergraduate		Graduate		Full-Time Total	Undergraduate		Graduate		Part-Time Total	
	#	% of Total	#	% of Total		#	% of Total	#	% of Total		
2008	24,514	85%	685	2%	25,199	3,011	10%	544	2%	3,555	28,754
2009	25,580	84%	1,131	4%	26,711	3,097	10%	581	2%	3,678	30,389
2010	27,599	85%	988	3%	28,587	3,149	10%	608	2%	3,757	32,344
2011	27,799	85%	975	3%	28,774	3,375	10%	572	2%	3,947	32,721
2012	29,386	87%	976	3%	30,362	2,956	9%	369	1%	3,325	33,687
2013	28,476	85%	1,184	4%	29,660	2,921	9%	578	2%	3,499	33,159
2014	30,053	88%	1,002	3%	31,055	2,582	8%	494	1%	3,076	34,131
2015	29,129	87%	1,080	3%	30,209	2,644	8%	658	2%	3,302	33,511
2016	31,867	87%	1,420	4%	33,287	2,933	8%	488	1%	3,421	36,708
2017	31,461	88%	1,319	4%	32,780	2,241	6%	554	2%	2,795	35,575

Part-time is defined as UG enrolled 11 Cr. Hrs or less or GR enrolled 8 Cr. Hrs or less.

Full-time is defined as UG enrolled 12 Cr. Hrs or more or GR enrolled 9 Cr. Hrs or more.

FT and PT headcount and credit hours data are based on the IHL archive date, which is between day 10 and day 15 of enrollment each semester.

Unduplicated Enrollment by Student Classification | Table 2.9
Fall 2008 - 2017 | Spring 2009 - 2018

	Fall 2008	Fall 2009	Fall 2010	Fall 2011	Fall 2012	Fall 2013	Fall 2014	Fall 2015	Fall 2016	Fall 2017
Undergraduate Total	2193	2272	2394	2478	2503	2429	2527	2470	2745	2577
Freshman	575	554	509	489	500	473	549	622	794	565
Sophomore	296	344	337	305	303	345	414	401	348	397
Junior	479	509	598	644	686	656	647	619	715	745
Senior	843	865	950	1040	1014	955	917	828	888	870
Graduate Total	172	204	193	183	147	200	169	203	211	212
Enrollment Total	2365	2476	2587	2661	2650	2629	2696	2673	2956	2789

	Spring 2009	Spring 2010	Spring 2011	Spring 2012	Spring 2013	Spring 2014	Spring 2015	Spring 2016	Spring 2017	Spring 2018
Undergraduate Total	2099	2221	2357	2346	2427	2296	2367	2365	2511	2441
Freshman	490	476	433	395	413	375	463	491	616	485
Sophomore	239	267	280	245	206	243	227	276	243	224
Junior	436	501	524	518	627	444	466	466	479	571
Senior	934	977	1120	1188	1181	1234	1211	1132	1173	1161
Graduate Total	184	212	184	190	169	211	191	209	207	207
Enrollment Total	2283	2433	2541	2536	2596	2507	2558	2574	2718	2648

Unduplicated Enrollment by Credit Hours & Student Classification | Table 2.10
Fall 2017

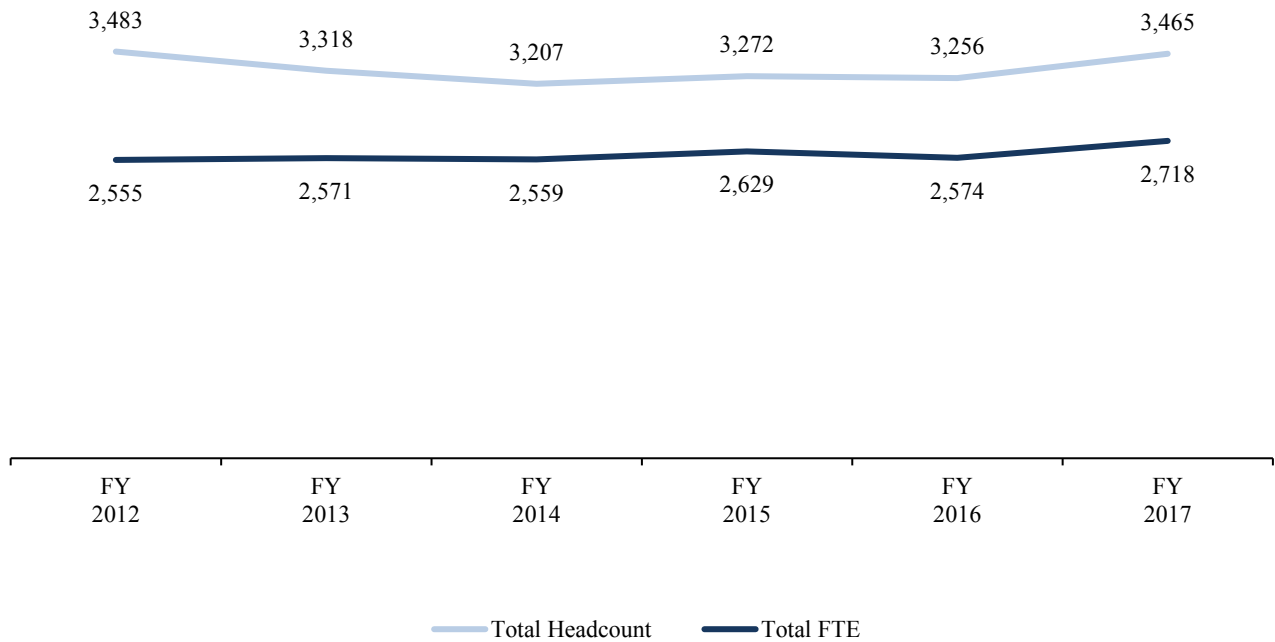
Sem. Hours	Freshman		Sophomore		Junior		Senior		Graduate		Grand Total	
	HC	FTE	HC	FTE	HC	FTE	HC	FTE	HC	FTE	HC	FTE
1	1	0.1	0	0.0	0	0.0	7	0.5	0	0.0	8	0.5
2	0	0.0	0	0.0	0	0.0	2	0.3	0	0.0	2	0.3
3	196	39.2	7	1.4	6	1.2	25	5.0	18	4.5	252	51.3
4	2	0.5	1	0.3	0	0.0	6	1.6	1	0.3	10	2.7
5	0	0.0	0	0.0	0	0.0	2	0.7	0	0.0	2	0.7
6	54	21.6	8	3.2	13	5.2	60	24.0	52	26.0	187	80.0
7	2	0.9	0	0.0	4	1.9	2	0.9	8	4.7	16	8.4
8	0	0.0	1	0.5	0	0.0	5	2.7	16	10.7	22	13.9
9	2	1.2	4	2.4	8	4.8	24	14.4	33	24.8	71	47.6
10	2	1.3	1	0.7	3	2.0	11	7.3	12	10.0	29	21.3
11	1	0.7	0	0.0	3	2.2	1	0.7	7	6.4	12	10.1
12	43	34.4	47	37.6	148	118.4	165	132.0	22	22.0	425	344.4
13	15	13.0	48	41.6	65	56.3	70	60.7	42	45.5	240	217.1
14	50	46.7	10	9.3	17	15.9	28	26.1	0	0.0	105	98.0
15	63	63.0	115	115.0	299	299.0	208	208.0	1	1.3	686	686.3
16	41	43.7	66	70.4	90	96.0	112	119.5	0	0.0	309	329.6
17	80	90.7	35	39.7	13	14.7	28	31.7	0	0.0	156	176.8
18	9	10.8	39	46.8	57	68.4	82	98.4	0	0.0	187	224.4
19	4	5.1	15	19.0	17	21.5	26	32.9	0	0.0	62	78.5
20	0	0.0	0	0.0	1	1.3	3	4.0	0	0.0	4	5.3
21	0	0.0	0	0.0	1	1.4	1	1.4	0	0.0	2	2.8
22	0	0.0	0	0.0	0	0.0	2	2.9	0	0.0	2	2.9
Grand Total	565	372.9	397	387.9	745	710.3	870	775.7	212	156.1	2789	2402.9

Fiscal Year Headcount and FTE Enrollment | Table 2.11

FY 2012 - 2017

	FY 2012	FY 2013	FY 2014	FY 2015	FY 2016	FY 2017	FY 2012 - 2017	
							# Ch	% Ch
Undergraduate Headcount	3,222	3,090	2,921	3,033	2,981	3,200	-22	-1%
Undergraduate FTE	2,379	2,409	2,368	2,459	2,374	2,521	142	6%
Graduate Headcount	261	228	286	239	275	265	4	2%
Graduate FTE	176	162	191	170	200	197	21	12%
Total Headcount	3,483	3,318	3,207	3,272	3,256	3,465	-18	-1%
Total FTE	2,555	2,571	2,559	2,629	2,574	2,718	163	6%

Total Headcount vs Total FTE



Numbers are taken from IPEDS Reporting.
FY is defined as July 1 - June 30.

Unduplicated Enrollment by Age Distribution and Student Classification | Table 2.12
Fall 2017 vs Fall 2016

Age Group	Freshman		Sophomore		Junior		Senior		Graduate		Total	
	FA	FA	FA	FA	FA	FA	FA	FA	FA	FA	FA	FA
	17	16	17	16	17	16	17	16	17	16	17	16
Under 18	227	392	1	0	0	0	0	0	0	0	228	392
18 and 19	292	334	110	75	17	12	2	2	0	0	421	423
20 and 21	27	52	174	141	358	301	203	166	0	0	762	660
22 to 24	7	4	48	45	145	150	288	305	45	44	533	548
25 to 29	5	4	19	29	86	87	140	177	67	71	317	368
30 to 34	0	1	20	15	51	62	79	75	37	35	187	188
35 to 39	2	2	8	19	34	33	45	68	17	21	106	143
40 to 49	1	2	13	21	49	57	77	66	34	30	174	176
50 to 64	3	1	4	2	5	13	29	20	12	10	53	46
65 and Over	1	2	0	1	0	0	7	9	0	0	8	12
Total	565	794	397	348	745	715	870	888	212	211	2789	2956

	Fall 2009	Fall 2010	Fall 2011	Fall 2012	Fall 2013	Fall 2014	Fall 2015	Fall 2016	Fall 2017
Average Age	25.5	26.1	26.7	26.6	26.2	25.9	25.2	24.5	24.7
Average Age Men	23.6	23.9	25.6	25.6	25.2	24.6	23.7	22.5	22.9
Average Age Women	25.9	26.6	27.0	26.8	26.5	26.3	25.6	25.0	25.1

Unduplicated Enrollment by Non-traditional and Traditional Students | Table 2.13
Fall 2008 - 2017

Fall	Non-traditional						Traditional						Total
	Full-Time		Part-Time		Non-Trad. Total		Full-Time		Part-Time		Trad. Total		
	#	% of Total	#	% of Total	#	% of Total	#	% of Total	#	% of Total	#	% of Total	
2008	400	16.9%	363	15.3%	763	32.2%	1,328	56.2%	274	11.6%	1,602	67.8%	2,365
2009	543	21.9%	354	14.3%	897	36.2%	1,312	53.0%	267	10.8%	1,579	63.8%	2,476
2010	652	25.2%	367	14.2%	1,019	39.4%	1,312	50.7%	256	9.9%	1,568	60.6%	2,587
2011	705	26.5%	396	14.9%	1,101	41.4%	1,314	49.4%	246	9.2%	1,560	58.6%	2,661
2012	760	28.7%	311	11.7%	1,071	40.4%	1,333	50.3%	246	9.3%	1,579	59.6%	2,650
2013	702	26.7%	315	12.0%	1,017	38.7%	1,344	51.1%	268	10.2%	1,612	61.3%	2,629
2014	754	28.0%	255	9.5%	1,009	37.5%	1,395	51.7%	292	10.8%	1,687	62.5%	2,696
2015	642	24.0%	259	9.7%	901	33.7%	1,428	53.4%	344	12.9%	1,772	66.3%	2,673
2016	683	23.1%	250	8.5%	933	31.6%	1,559	52.7%	464	15.7%	2,023	68.4%	2,956
2017	600	21.5%	245	8.8%	845	30.3%	1,630	58.4%	314	11.3%	1,944	69.7%	2,789

Non-traditional Students are defined as those who are at least 25 years of age.

Part-time is defined as UG enrolled 11 Cr. Hrs or less or GR enrolled 8 Cr. Hrs or less

Full-time is defined as UG enrolled 12 Cr. Hrs or more or GR enrolled 9 Cr. Hrs or more.

Residence Hall Student Enrollment | Table 2.14
Fall 2008 - 2017

Residence Hall	Fall 2008	Fall 2009	Fall 2010	Fall 2011	Fall 2012	Fall 2013	Fall 2014	Fall 2015	Fall 2016	Fall 2017
Callaway	100	102	89	92	107	107	110	110	113	118
Columbus	50	50	45	43	41	45	50	43	45	44
Frazier										
Goen										
Grossnickle	42	43	42	42	43	41	44	45	44	42
Hastings-Simmons	52	44	41	49	48	51	48	42	42	44
Jones	176	152	154	147	157	145	136	129	148	155
Kincannon	174	175	177	162	170	153	182	168	159	166
Total	594	566	548	535	566	542	570	537	551	569

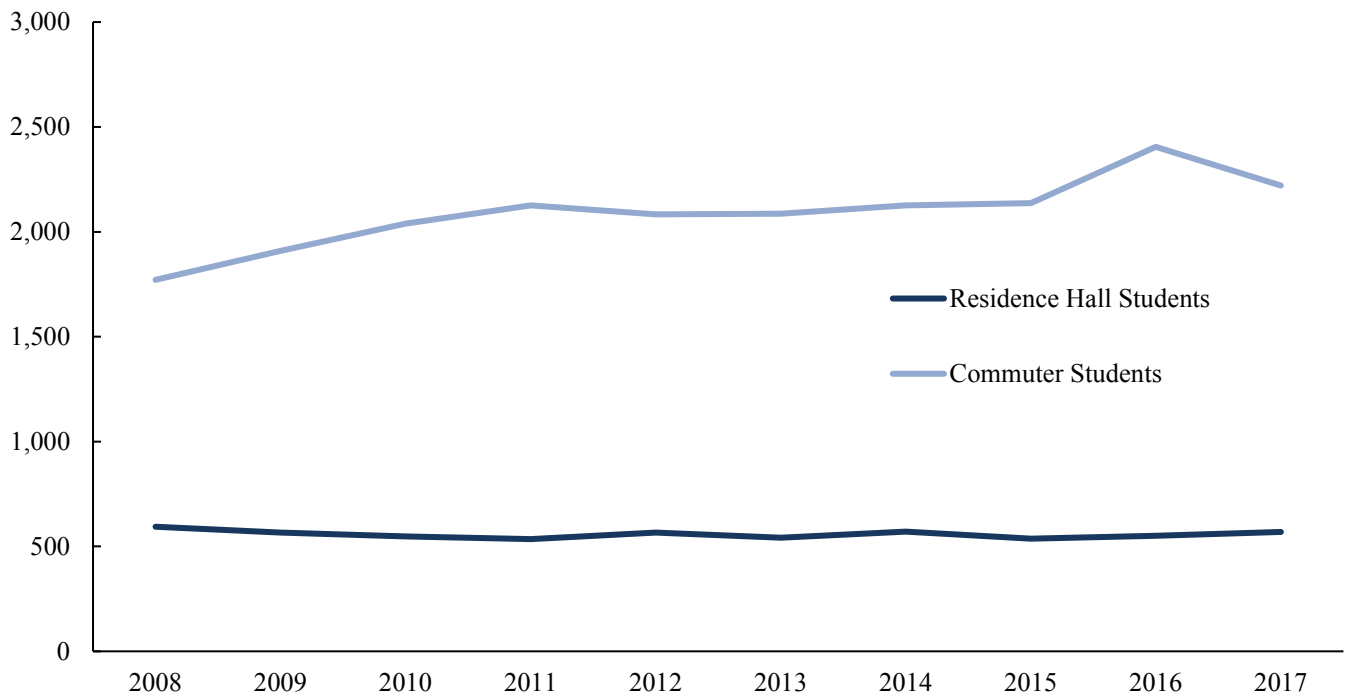
Residence Hall Enrollment by Ethnicity and Gender
Fall 2017

Residence Hall	Black	Other	White	Total	Residence Hall	Men	Women	Total
Callaway	72	4	42	118	Callaway	0	118	118
Columbus	29	3	12	44	Columbus	44	0	44
Grossnickle	6	1	35	42	Grossnickle	7	35	42
Hastings-Simmons	25	2	17	44	Hastings-Simmons	0	44	44
Jones	102	8	45	155	Jones	0	155	155
Kincannon	64	14	88	166	Kincannon	69	97	166
Total	298	32	239	569	Total	120	449	569

[1] The "Other" category includes Hispanic/Latino, American Indian/Alaskan Native, Asian, Native Hawaiian/Pacific Islander, Multi-racial, and Non-resident Alien students.

Unduplicated Enrollment by Residence Hall and Commuter Students | Table 2.15
Fall 2008 - 2017

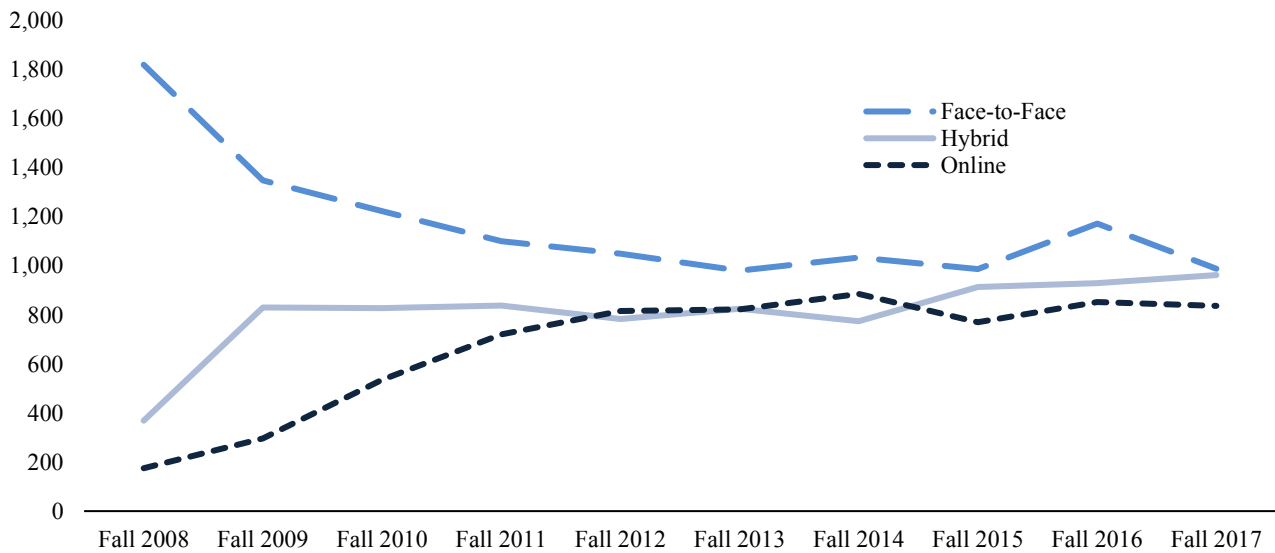
Fall	Residence Hall Students			Commuter Students			Total
	#	% of Total	% Ch Yr Ago	#	% of Total	% Ch Yr Ago	
2008	594	25.1%	-	1,771	74.9%	-	2,365
2009	566	22.9%	-4.71%	1,910	77.1%	7.85%	2,476
2010	548	21.2%	-3.18%	2,039	78.8%	6.75%	2,587
2011	535	20.1%	-2.37%	2,126	79.9%	4.27%	2,661
2012	566	21.4%	5.79%	2,084	78.6%	-1.98%	2,650
2013	542	20.6%	-4.24%	2,087	79.4%	0.14%	2,629
2014	570	21.1%	5.17%	2,126	78.9%	1.87%	2,696
2015	537	20.1%	-5.79%	2,136	79.9%	0.47%	2,673
2016	551	18.6%	2.61%	2,405	81.4%	12.59%	2,956
2017	569	20.4%	3.27%	2,220	79.6%	-7.69%	2,789



Unduplicated Enrollment by Course Method | Table 2.16

Fall 2008 - 2017

	Online			Face-to-Face			Hybrid			Total
	#	% of Total	% Ch Yr Ago	#	% of Total	% Ch Yr Ago	#	% of Total	% Ch Yr Ago	
Fall 2008	175	7.4%	-	1,821	77.0%	-	369	15.6%	-	2,365
Fall 2009	296	12.0%	69.1%	1,349	54.5%	-25.9%	831	33.6%	125.2%	2,476
Fall 2010	535	20.7%	80.7%	1,224	47.3%	-9.3%	828	32.0%	-0.4%	2,587
Fall 2011	721	27.1%	34.8%	1,101	41.4%	-10.0%	839	31.5%	1.3%	2,661
Fall 2012	816	30.8%	13.2%	1,050	39.6%	-4.6%	784	29.6%	-6.6%	2,650
Fall 2013	823	31.3%	0.9%	981	37.3%	-6.6%	825	31.4%	5.2%	2,629
Fall 2014	886	32.9%	7.7%	1,035	38.4%	5.5%	775	28.7%	-6.1%	2,696
Fall 2015	771	28.8%	-13.0%	988	37.0%	-4.5%	914	34.2%	17.9%	2,673
Fall 2016	853	28.9%	10.6%	1,173	39.7%	18.7%	930	31.5%	1.8%	2,956
Fall 2017	837	30.0%	-1.9%	989	35.5%	-15.7%	963	34.5%	3.5%	2,789



Source: Fall 2007-2008: Day 10 Archives, Fall 2009-2016: IHL Student Files

An online student is enrolled in only online courses.

A face-to-face student is enrolled in only face-to-face courses.

A hybrid student is enrolled in both online and face-to-face courses.

Unduplicated Enrollment by State of Residence | Table 2.17
Fall 2013 - 2017

State	Fall 2013	Fall 2014	Fall 2015	Fall 2016	Fall 2017	5 Yr # Ch
Alabama	139	145	165	168	214	75
Alaska	0	0	0	0	0	0
Arizona	2	1	1	2	1	-1
Arkansas	6	6	6	6	6	0
California	5	4	6	5	7	2
Colorado	3	1	2	1	1	-2
Delaware	2	2	1	1	1	-1
Florida	10	10	8	7	6	-4
Georgia	9	9	4	6	14	5
Hawaii	0	0	0	0	0	0
Illinois	1	0	2	7	4	3
Indiana	1	1	0	1	1	0
Iowa	1	1	0	0	0	-1
Kansas	0	1	0	0	0	0
Kentucky	0	1	1	2	2	2
Louisiana	2	3	10	11	13	11
Maryland	2	3	3	4	5	3
Massachusetts	0	0	1	0	0	0
Michigan	1	0	0	0	0	-1
Minnesota	0	0	2	2	3	3
Mississippi	2345	2387	2298	2520	2346	1
Missouri	4	4	2	0	1	-3
Montana	0	1	1	1	1	1
Nevada	0	0	0	0	1	1
New Hampshire	0	0	1	1	1	1
New Jersey	0	0	1	3	1	1
New York	4	3	5	4	3	-1
North Carolina	1	1	4	4	4	3
Ohio	2	2	0	1	3	1
Oklahoma	0	0	0	1	3	3
Oregon	0	0	0	1	1	1

Unduplicated Enrollment by State of Residence | Table 2.17

Fall 2013 - 2017

State	Fall 2013	Fall 2014	Fall 2015	Fall 2016	Fall 2017	5 Yr # Ch
Pennsylvania	2	2	1	1	3	1
South Carolina	0	1	1	1	5	5
Tennessee	36	39	39	32	42	6
Texas	6	7	7	9	14	8
Utah	0	0	0	1	0	0
Vermont	0	0	0	0	0	0
Virgin Islands of the United States	0	0	0	1	0	0
Virginia	1	1	0	1	3	2
Washington	2	2	1	0	1	-1
Wisconsin	1	1	0	0	0	-1
Total U.S. Enrollment	2588	2639	2573	2805	2711	123

Unduplicated Enrollment by Country | Table 2.18

Fall 2013 - 2017

Country	Fall 2013	Fall 2014	Fall 2015	Fall 2016	Fall 2017	5 Yr # Ch
Bahamas	0	0	0	0	1	1
Bulgaria	0	0	0	0	1	1
Canada	1	1	0	1	1	0
China	6	1	0	0	0	-6
France	0	0	0	0	1	1
Ghana	0	1	1	0	0	0
India	0	0	0	1	0	0
Italy	0	0	1	1	1	1
Jamaica	0	0	0	1	1	1
Japan	0	0	0	1	1	1
Kenya	1	1	2	1	1	0
Korea	1	1	1	0	0	-1
Lithuania	0	0	0	1	0	0
Macedonia	0	0	0	1	1	1
Malawi	0	0	1	1	1	1
Nepal	21	41	89	138	64	43
Nigeria	6	6	3	3	1	-5
Philippines	0	0	0	0	1	1
Romania	0	0	1	1	1	1
Rwanda	1	1	0	0	0	-1
Spain	0	0	1	0	0	0
Sri Lanka	2	2	0	0	0	-2
Taiwan (Republic of China)	0	0	0	0	1	1
Uganda	1	1	0	0	0	-1
Venezuela	1	1	0	0	0	-1
Total Foreign Students	41	57	100	151	78	37
Countries Represented	10	11	9	12	15	5

Unduplicated Enrollment by MS County | Table 2.19
Fall 2013 - 2017

County	Fall 2013	Fall 2014	Fall 2015	Fall 2016	Fall 2017	5 Yr # Ch
Adams	2	5	5	3	6	4
Alcorn	31	31	29	34	27	-4
Amite	4	2	1	0	0	-4
Attala	16	17	16	25	20	4
Benton	3	4	3	5	7	4
Bolivar	16	20	26	28	23	7
Calhoun	20	17	16	16	14	-6
Carroll	7	5	4	3	3	-4
Chickasaw	35	42	38	33	44	9
Choctaw	23	21	14	13	11	-12
Claiborne	2	1	4	2	3	1
Clarke	12	9	9	6	9	-3
Clay	101	94	98	84	89	-12
Coahoma	12	13	12	8	12	0
Copiah	8	11	9	13	9	1
Covington	6	2	2	3	2	-4
DeSoto	66	70	68	70	50	-16
Forrest	11	5	8	19	14	3
Franklin	1	3	4	3	3	2
George	6	6	6	9	11	5
Greene	1	0	4	4	1	0
Grenada	12	14	12	16	18	6
Hancock	12	8	2	1	5	-7
Harrison	31	29	31	36	31	0
Hinds	80	103	82	93	109	29
Holmes	11	8	11	16	17	6
Humphreys	2	3	2	3	2	0
Issaquena	1	2	1	0	0	-1
Itawamba	30	31	29	38	46	16
Jackson	30	31	41	37	25	-5
Jasper	5	5	3	1	5	0

Unduplicated Enrollment by MS County | Table 2.19
Fall 2013 - 2017

County	Fall 2013	Fall 2014	Fall 2015	Fall 2016	Fall 2017	5 Yr # Ch
Jefferson	4	0	1	2	1	-3
Jefferson Davis	0	1	1	1	0	0
Jones	10	17	18	13	8	-2
Kemper	5	6	10	15	12	7
Lafayette	22	18	14	22	21	-1
Lamar	7	11	17	18	15	8
Lauderdale	61	72	60	58	59	-2
Lawrence	4	5	4	9	6	2
Leake	12	10	4	9	13	1
Lee	117	131	126	131	126	9
Leflore	30	21	32	30	21	-9
Lincoln	13	11	11	7	10	-3
Lowndes	636	644	631	758	582	-54
Madison	50	53	47	55	46	-4
Marion	3	6	5	6	5	2
Marshall	18	18	17	20	17	-1
Monroe	131	120	119	112	123	-8
Montgomery	8	11	11	12	19	11
Neshoba	19	21	20	17	18	-1
Newton	14	14	14	23	26	12
Noxubee	57	39	29	31	30	-27
Oktibbeha	142	149	134	129	150	8
Panola	13	16	12	12	14	1
Pearl River	8	4	8	13	11	3
Perry	1	3	4	3	2	1
Pike	12	5	19	11	10	-2
Pontotoc	32	42	28	33	27	-5
Prentiss	22	14	17	20	25	3
Quitman	4	4	4	4	1	-3
Rankin	61	74	73	80	77	16
Scott	4	5	8	13	14	10

Unduplicated Enrollment by MS County | Table 2.19
Fall 2013 - 2017

County	Fall 2013	Fall 2014	Fall 2015	Fall 2016	Fall 2017	5 Yr # Ch
Sharkey	0	0	1	0	0	0
Simpson	4	5	2	1	5	1
Smith	6	5	3	2	3	-3
Stone	7	8	3	7	6	-1
Sunflower	20	18	17	22	21	1
Tallahatchie	3	0	2	5	7	4
Tate	12	19	20	13	15	3
Tippah	17	15	15	14	10	-7
Tishomingo	5	11	10	13	14	9
Tunica	2	1	0	0	1	-1
Union	23	21	21	28	20	-3
Walthall	2	1	0	1	1	-1
Warren	15	14	11	15	17	2
Washington	39	41	33	28	27	-12
Wayne	3	3	7	7	7	4
Webster	17	16	11	17	27	10
Wilkinson	0	1	0	0	0	0
Winston	40	38	37	38	41	1
Yalobusha	3	3	7	5	4	1
Yazoo	10	10	10	15	15	5
Total MS Enrollment	2345	2387	2298	2520	2346	1
MS Counties Represented	79	78	79	77	77	-2

**Unduplicated Enrollment by IHL Official Academic Program Inventory (API) | Table 2.20
Fall 2017**

Associate of Science	120	Bachelor of Science (Cont.)	
513801 Nursing	120	400101 Physical Sciences	1
Bachelor of Applied Science	124	512207 Public Health Education	310
520201 Business Administration	122	440401 Public Safety Administration ¹	1
512207 Public Health Education	2	450101 Social Sciences ¹	2
Bachelor of Arts	228	510203 Speech Pathology	86
260101 Biology	0	Bachelor of Science in Nursing	489
090101 Communications	17	513801 Nursing	489
230101 English	51	Master of Arts	6
240101 General Studies	2	050207 Women's Leadership	6
540101 History	29	Master of Arts in Teaching	3
309999 Interdisciplinary Studies	2	131205 Secondary Teacher Education	3
220302 Legal Studies	13	Master of Business Administration	15
270101 Mathematics	0	520201 Business Administration	15
500901 Music	7	Master of Education	19
451001 Political Science	11	130401 Educational Leadership	6
420101 Psychology	81	131004 Gifted Studies	6
440401 Public Safety Administration ¹	0	131315 Reading/Literacy	7
450101 Social Sciences ¹	0	Master of Fine Arts	50
160905 Spanish	2	231302 Creative Writing	28
500101 Theatre	11	500506 Physical Theatre	22
050207 Women's Studies	2	Master of Public Health	35
Bachelor of Fine Arts	58	512201 Public Health	35
131302 Art Education ¹	5	Master of Science	25
500101 Fine Arts	53	510203 Speech-Language Pathology	25
Bachelor of Music	37	Master of Science in Nursing	38
500901 Music	37	513899 Family Nurse Clinician	38
Bachelor of Science	1221	Doctor of Nursing Practice	8
520301 Accounting	49	513818 Nursing Practice	8
260101 Biology	82	Undeclared	308
520201 Business Administration	245	Unclassified - Graduate	8
400501 Chemistry	9	Undeclared - Degree Seeking	25
090101 Communications	25	Undeclared - Non-Degree Seeking	275
120599 Culinary Arts	74	Certificate Programs	5
120509 Culinary Science/Culinology	0	513805 Post-Graduate Advanced- -Practice Registered Nurse	0
131202 Elementary Education	13	Add-on Certificates	
190704 Family Studies	25	Gifted Studies-Certification	2
240101 General Studies	13	Reading/Literacy Certificate	3
309999 Interdisciplinary Studies	111	Total Enrollment	2789
310501 Kinesiology	123		
220302 Legal Studies	31		
270101 Mathematics	21		

¹The following programs are being phased out.

**Unduplicated Enrollment by IHL Official Academic Program Inventory (API) | Table 2.21
Spring 2018**

Associate of Science	109	Bachelor of Science (Cont.)	
513801 Nursing	109	400101 Physical Sciences	1
Bachelor of Applied Science	130	512207 Public Health Education	287
520201 Business Administration	123	440401 Public Safety Administration ¹	1
512207 Public Health Education	7	450101 Social Sciences ¹	2
Bachelor of Arts	222	510203 Speech Pathology	72
260101 Biology	0	Bachelor of Science in Nursing	465
090101 Communications	19	513801 Nursing	465
230101 English	49	Master of Arts	4
240101 General Studies	2	050207 Women's Leadership	4
540101 History	28	Master of Arts in Teaching	4
309999 Interdisciplinary Studies	1	131205 Secondary Teacher Education	4
220302 Legal Studies	15	Master of Business Administration	16
270101 Mathematics	1	520201 Business Administration	16
500901 Music	10	Master of Education	17
451001 Political Science	8	130401 Educational Leadership	6
420101 Psychology	70	131004 Gifted Studies	5
440401 Public Safety Administration ¹	0	131315 Reading/Literacy	6
450101 Social Sciences ¹	0	Master of Fine Arts	38
160905 Spanish	4	231302 Creative Writing	30
500101 Theatre	13	500506 Physical Theatre	8
050207 Women's Studies	2	Master of Public Health	30
Bachelor of Fine Arts	52	512201 Public Health	30
131302 Art Education ¹	6	Master of Science	25
500101 Fine Arts	46	510203 Speech-Language Pathology	25
Bachelor of Music	29	Master of Science in Nursing	38
500901 Music	29	513899 Family Nurse Clinician	38
Bachelor of Science	1119	Doctor of Nursing Practice	8
520301 Accounting	46	513818 Nursing Practice	8
260101 Biology	70	Undeclared	336
520201 Business Administration	237	Unclassified - Graduate	21
400501 Chemistry	8	Undeclared - Degree Seeking	16
090101 Communications	16	Undeclared - Non-Degree Seeking	299
120599 Culinary Arts	67	Certificate Programs	6
120509 Culinary Science/Culinology	0	513805 Post-Graduate Advanced- -Practice Registered Nurse	0
131202 Elementary Education	13	Add-on Certificates	
190704 Family Studies	22	Gifted Studies-Certification	3
240101 General Studies	21	Reading/Literacy Certificate	3
309999 Interdisciplinary Studies	107	Total Enrollment	2648
310501 Kinesiology	105		
220302 Legal Studies	31		
270101 Mathematics	13		

¹The following programs are being phased out.

Unduplicated Enrollment by College & Department | Table 3.1
Fall 2013 - 2017

College / Department	2013	2014	2015	2016	2017	5 Yr # Ch	5 Yr % Ch
Total Fall Enrollment	2,629	2,696	2,673	2,956	2,789	160	6%
College of Arts, Sciences, & Education	710	649	670	721	680	-30	-4%
Art & Design	61	58	49	56	58	-3	-5%
Communication	50	39	44	48	42	-8	-16%
Education	207	162	152	149	40	-167	-81%
History, Political Science, and Geography	55	38	40	35	155	100	182%
Languages, Literature, & Philosophy	62	69	74	78	89	27	44%
Music	34	33	32	44	44	10	29%
Psychology & Family Studies	98	103	104	121	106	8	8%
Sciences & Mathematics	101	114	138	153	113	12	12%
Theatre	42	33	37	37	33	-9	-21%
College of Business & Professional Studies	415	442	476	513	566	151	36%
Business	279	308	353	388	448	169	61%
Culinary Arts	99	103	92	91	74	-25	-25%
Legal Studies	37	31	31	34	44	7	19%
College of Nursing & Health Sciences	1,206	1,321	1,215	1,257	1,236	30	2%
Associate Nursing	136	177	184	153	120	-16	-12%
Baccalaureate Nursing	641	709	642	680	489	-152	-24%
Graduate Nursing	49	47	49	44	46	-3	-6%
Health & Kinesiology	286	289	239	276	470	184	64%
Speech-Language Pathology	94	99	101	104	111	17	18%
University	298	284	312	465	307	9	3%

Prior to fall 2017, the Departments of Education, Psychology & Family Studies, and Health & Kinesiology were housed in the College of Education & Human Sciences. That college has been dissolved.

Unduplicated Enrollment by College, Department, & Major/Concentration | Table 3.2

Fall 2013 - 2017

College/ Department	Major/Concentration	Degree	2013	2014	2015	2016	2017	5 Yr # Ch	5 Yr % Ch
College of Arts, Sciences, & Education			710	649	670	721	680	-30	-4%
Art & Design	Art Education ¹	[BFA]	2	3	3	10	5	3	150%
	Fine Art ¹	[BA]	32	35	26	0	0	-32	-100%
	Fine Arts - Studio Art ⁴	[BFA]	17	15	8	14	30	13	76%
	Fine Arts - Studio - Graphic ⁴	[BFA]	10	5	12	24	23	13	130%
	Pre-Art Education ¹	[BFA]	0	0	0	0	0	0	-
	Pre-Fine Arts - St-Graphic ³	[BFA]	0	0	0	4	0	0	-
	Pre-Fine Arts - Studio Art ³	[BFA]	0	0	0	4	0	0	-
	Department Total			61	58	49	56	58	-3
Communication	Communication	[BA, BS]	50	39	44	48	42	-8	-16%
	Department Total		50	39	44	48	42	-8	-16%
Education ²	Differentiated Instruction ¹	[MED]	0	0	1	0	0	0	-
	Educational Leadership	[MED]	15	9	8	6	6	-9	-60%
	Elementary Education ³	[BS]	156	127	121	118	13	-143	-92%
	Gifted Studies	[MED]	6	4	4	6	6	0	0%
	Gifted Studies - Certification	[O]	9	9	3	4	2	-7	-78%
	Reading/Literacy	[MED]	17	13	15	14	7	-10	-59%
	Reading/Literacy Certificate	[O]	1	0	0	0	3	2	200%
	Secondary Teacher Ed (Alt Rte) ⁵	[MAT]	3	0	0	1	3	0	0%
Department Total			207	162	152	149	40	-167	-81%
History, Political Science, & Geography	History	[BA]	16	8	12	10	15	-1	-6%
	History - Public History	[BA]	0	1	1	1	2	2	-
	History - Teacher Certification	[BA]	8	5	5	6	12	4	50%
	Interdisciplinary Studies ³	[BA, BS]	3	2	3	6	113	110	3667%
	Political Science	[BA]	15	10	10	8	11	-4	-27%
	Public Administration Cert	[O]	0	0	0	0	0	0	-
	Social Sciences ¹	[BA, BS]	7	4	6	3	1	-6	-86%
	Social Sciences - Teacher Cert ¹	[BA, BS]	6	8	3	1	1	-5	-83%
Department Total			55	38	40	35	155	100	182%

Unduplicated Enrollment by College, Department, & Major/Concentration | Table 3.2

Fall 2013 - 2017

College/ Department	Major/Concentration	Degree	2013	2014	2015	2016	2017	5 Yr # Ch	5 Yr % Ch
Languages, Literature, & Philosophy	Creative Writing	[MFA]	0	0	11	25	28	28	-
	English	[BA]	22	19	14	15	23	1	5%
	English - Creative Writing	[BA]	24	25	22	15	15	-9	-38%
	English - Teacher Certification	[BA]	11	22	20	15	13	2	18%
	Spanish	[BA]	5	2	2	0	1	-4	-80%
	Spanish - Teaching	[BA]	0	0	1	1	1	1	-
	Women's Leadership	[MA]	0	0	3	5	6	6	-
	Women's Studies	[BA]	0	1	1	2	2	2	-
	Department Total			62	69	74	78	89	27
Music	Music	[BA]	1	5	6	7	7	6	600%
	Music - Music Education	[BM]	14	9	8	18	18	4	29%
	Music - Music Therapy	[BM]	19	19	18	19	19	0	0%
	Department Total		34	33	32	44	44	10	29%
Psychology & Family Studies ²	Family Studies	[BS]	29	36	38	39	25	-4	-14%
	Family Studies - Teaching	[BS]	0	0	0	0	0	0	-
	Psychology	[BA]	69	67	66	82	81	12	17%
	Department Total		98	103	104	121	106	8	8%
Sciences & Mathematics	Biology	[BA, BS]	68	81	93	110	79	11	16%
	Biology - Teacher Certification	[BA, BS]	2	1	1	5	3	1	50%
	Chemistry	[BS]	13	13	11	9	9	-4	-31%
	Mathematics	[BA, BS]	10	12	18	12	13	3	30%
	Mathematics - Pre-Engineering ¹	[BA, BS]	1	0	3	12	0	-1	-100%
	Mathematics - Teacher Cert	[BA, BS]	6	6	7	4	8	2	33%
	Physical Science - Teacher Cert	[BS]	1	1	5	1	1	0	0%
	Department Total		101	114	138	153	113	12	12%
Theatre	Physical Theatre	[MFA]	21	13	26	24	22	1	5%
	Theatre	[BA]	21	20	11	11	9	-12	-57%
	Theatre - Theatre Education	[BA]	0	0	0	2	2	2	-
	Department Total		42	33	37	37	33	-9	-21%

Unduplicated Enrollment by College, Department, & Major/Concentration | Table 3.2

Fall 2013 - 2017

College/ Department	Major/Concentration	Degree	2013	2014	2015	2016	2017	5 Yr # Ch	5 Yr % Ch
College of Business & Professional Studies			415	442	476	513	566	151	36%
Business	Accounting	[BS]	54	51	49	53	49	-5	-9%
	Business Administration ⁸	[MBA]	0	0	0	15	15	15	-
	Bus Admin - Cul Art - Main	[BAS]	0	0	0	11	10	10	-
	Bus Admin - Culin Art - Gulf	[BAS]	0	0	0	4	2	2	-
	Bus Admin - Culin Art - Hinds	[BAS]	0	0	0	7	8	8	-
	Business Admin - Entrepreneurship ¹	[BS]	5	10	4	1	0	-5	-100%
	Business Admin - General Bus	[BAS, BS]	76	86	77	97	129	53	70%
	Bus Admin - Health Care Mgt	[BAS, BS]	0	0	28	53	85	85	-
	Business Admin - Human Res Mgt	[BAS, BS]	0	0	2	15	26	26	-
	Bus Admin - Legal Admin	[BAS]	0	0	0	6	14	14	-
	Business Admin - Management	[BAS, BS]	23	30	28	25	26	3	13%
	Business Admin - Marketing	[BS]	34	17	18	13	16	-18	-53%
	Business Admin - MIS	[BAS, BS]	30	30	52	72	51	21	70%
	General Studies ⁷	[BA, BS]	0	0	0	0	15	15	-
	Global Commerce ⁸	[MS]	9	13	12	0	0	-9	-100%
	Prof Studies - Cul Art - Main ⁹	[BT]	0	2	5	0	0	0	-
	Prof Studies - Culin Art - Gulf ⁹	[BT]	0	3	6	0	0	0	-
	Prof Studies - Culin Art - Hinds ⁹	[BT]	0	3	4	0	0	0	-
	Prof Studies - Gen Business ⁹	[BT]	12	23	19	0	0	-12	-100%
	Prof Studies - Health Care Mgt ⁹	[BT]	0	0	3	0	0	0	-
	Prof Studies - Human Res ⁹	[BT]	7	10	9	0	0	-7	-100%
	Prof Studies - Legal Admin ⁹	[BT]	7	9	8	0	0	-7	-100%
	Prof Studies - Mgt Info Sys ⁹	[BT]	17	16	13	0	0	-17	-100%
	Pub-Safety Ad/FSM/Gen Bus ¹	[BA, BS]	3	2	2	0	1	-2	-67%
	Pub-Safety Ad/FSM/Law & Gov ¹	[BA, BS]	1	1	0	0	0	-1	-100%
	Undeclared - Undergraduate	[BAS]	0	0	0	16	1	1	-
	Undeclared - Undergraduate ⁹	[BT]	1	2	14	0	0	-1	-100%
Department Total			279	308	353	388	448	169	61%

Unduplicated Enrollment by College, Department, & Major/Concentration | Table 3.2

Fall 2013 - 2017

College/ Department	Major/Concentration	Degree	2013	2014	2015	2016	2017	5 Yr # Ch	5 Yr % Ch
Culinary Arts	Culinary Arts	[BS]	99	103	92	91	74	-25	-25%
	Department Total		99	103	92	91	74	-25	-25%
Legal Studies	Legal Studies	[BA, BS]	37	31	31	34	44	7	19%
	Department Total		37	31	31	34	44	7	19%
College of Nursing & Health Sciences			1,206	1,321	1,215	1,257	1,236	30	2%
Associate Nursing	Associate of Science Nursing	[ASN]	99	109	109	104	120	21	21%
	Pre-Nursing ASN ³	[ASN]	37	68	75	49	0	-37	-100%
	Department Total		136	177	184	153	120	-16	-12%
Baccalaureate Nursing	Bachelor of Science Nursing	[BSN]	125	120	138	136	138	13	10%
	Nursing - BSN - Tupelo	[BSN]	397	439	355	385	351	-46	-12%
	Pre-Nursing BSN ³	[BSN]	97	136	138	138	0	-97	-100%
	Pre-Nursing BSN - Tupelo ¹	[BSN]	22	14	11	21	0	-22	-100%
	Department Total		641	709	642	680	489	-152	-24%
Graduate Nursing	Family Nurse Practitioner	[MSN]	41	37	35	31	38	-3	-7%
	Nursing Practice	[DNP]	6	4	11	13	8	2	33%
	Post - Graduate Adv Pr Reg Nurse	[PMC]	0	0	0	0	0	0	-
	Post Masters Certificate Nursing	[PMC]	1	5	1	0	0	-1	-100%
	Psychiatric Mental Health ¹	[MSN]	1	1	0	0	0	-1	-100%
	Unclassified - Graduate	[O]	0	0	2	0	0	0	-
	Department Total		49	47	49	44	46	-3	-6%
Health & Kinesiology ²	General Studies ⁷	[BA, BS]	42	33	19	17	0	-42	-100%
	Health Education ¹⁰	[MS]	44	37	46	39	0	-44	-100%
	Kinesiology - Exercise Science ³	[BS]	28	31	25	51	96	68	243%
	Kinesiology - Exer Sci - Phys Ther ⁶	[BS]	45	62	38	31	26	-19	-42%
	Kinesiology - Teaching	[BS]	9	11	7	6	1	-8	-89%
	Pre-Occupational Therapy ³	[BS]	6	4	4	8	0	-6	-100%
	Public Health ¹⁰	[MPH]	0	0	0	0	35	35	-
	Public Health Education	[BAS, BS]	112	111	100	124	312	200	179%
Department Total		286	289	239	276	470	184	64%	

Unduplicated Enrollment by College, Department, & Major/Concentration | Table 3.2

Fall 2013 - 2017

College/ Department	Major/Concentration	Degree	2013	2014	2015	2016	2017	5 Yr # Ch	5 Yr % Ch
Speech-Language Pathology	Speech-Language Pathology	[BS]	69	75	76	76	86	17	25%
	Speech-Language Pathology	[MS]	25	24	25	28	25	0	0%
	Department Total		94	99	101	104	111	17	18%
University		298	284	312	465	307	9	3%	
University	Undeclared - Undergraduate	[BS, O]	297	284	312	465	299	2	1%
	Unclassified - Graduate	[O]	1	0	0	0	8	7	700%
	University Total		298	284	312	465	307	9	3%
Total Enrollment			2,629	2,696	2,673	2,956	2,789	160	6%

All prior falls have been updated to reflect to the fall 2017 college/department/program structure. Prior to fall 2017, the College of Arts, Sciences, and Education was coded as the College of Arts & Sciences and the College of Nursing & Health Sciences was coded as the College of Nursing & Speech-Language Pathology.

¹These Programs/Concentrations are being phased out.

²Prior to fall 2017, the Departments of Education, Psychology & Family Studies, and Health & Kinesiology were housed in the College of Education & Human Sciences. That college has been dissolved.

³Fall 2017 forward, all pre-majors will be coded in a degree program. All pre-art majors will be coded in Fine Arts - Studio Art [BFA] and Fine Arts - Studio - Graphic [BFA]. Pre-Elementary Education majors will be coded in Interdisciplinary Studies [BS]; prior to fall 2017, those student were coded in Elementary Education [BS]. Pre-Nursing ASN and Pre-Nursing BSN will be coded in Public Health Education [BS]. Pre-Occupational Therapy [BS] will be coded in Kinesiology - Exercise Science [BS].

⁴Prior to Fall 2016, 'Fine Arts - Studio Art' was coded as 'Studio Art' and 'Fine Arts - Studio - Graphic' was coded as 'Graphic Design'. Prior to Fall 2016, all pre-Fine Arts majors were included with the Fine Arts [BA] majors.

⁵Prior to Fall 2016, Secondary Teacher Ed (Alt Rte) was coded as Education (MAT).

⁶Prior to Fall 2017, 'Kinesiology - Exer Sci - Phys Ther' was coded as 'Exercise Sci-Physical Therapy'.

⁷Prior to Fall 2017, General Studies was housed in the Department of Health & Kinesiology. Fall 2017 forward, the program will be housed in the Department of Business.

⁸The Global Commerce [MS] program has been discontinued and restructured/renamed to Business Administration [MBA].

⁹The Professional Studies [BT] program has been discontinued and restructured/renamed to Business Administration [BAS]. Fall 2016 forward, the Business Administration programs/concentrations will contain both the BAS and BS degree programs except for those noted in the table.

¹⁰The Health Education [MS] program has been discontinued and restructured/renamed to Public Health [MPH].

Unduplicated Enrollment by Minor | Table 3.3

Fall 2013 - 2017

College/ Department	Minor Description	Minor Code	2013	2014	2015	2016	2017	5 Yr # Ch	5 Yr % Ch
College of Arts, Sciences, & Education			115	109	110	107	111	-4	-3%
Art & Design	General Art	GA	2	3	1	0	0	-2	-100%
	Studio Art	SA	0	0	0	3	4	4	-
	Department Total		2	3	1	3	4	2	100%
Communication	Communication	COM	5	2	6	4	3	-2	-40%
	Film Studies	FILM	4	5	6	10	5	1	25%
	Department Total		9	7	12	14	8	-1	-11%
History, Political Science, & Geography	History	HIS	6	7	5	2	4	-2	-33%
	IS-American Studies ¹	AMST	7	4	4	1	0	-7	-100%
	IS-International Studies ¹	INTL	1	3	1	1	0	-1	-100%
	IS-Medieval & Ren Studies ¹	MRS	0	0	3	2	2	2	-
	Political Science	POL	4	1	0	1	6	2	50%
	Department Total		18	15	13	7	12	-6	-33%
Languages, Literature, & Philosophy	English	ENG	6	5	6	3	1	-5	-83%
	English - Creative Writing	ENCW	1	1	2	3	4	3	300%
	French	FRN	0	0	2	1	1	1	-
	Philosophy	PHL	0	0	2	2	3	3	-
	Religious Studies	RELS	3	5	5	1	4	1	33%
	Spanish	SPN	9	7	9	9	8	-1	-11%
	Women's Studies	WS	5	3	3	3	3	-2	-40%
	Department Total		24	21	29	22	24	0	0%
Music	Music	MUS	7	12	9	7	7	0	0%
	Department Total		7	12	9	7	7	0	0%
Psychology & Family Studies ²	Family Studies	FS	6	8	4	6	10	4	67%
	Psychology	PSY	32	29	37	29	28	-4	-13%
	Department Total		38	37	41	35	38	0	0%

Unduplicated Enrollment by Minor | Table 3.3

Fall 2013 - 2017

College/ Department	Minor Description	Minor Code	2013	2014	2015	2016	2017	5 Yr # Ch	5 Yr % Ch
Sciences & Mathematics	Biology	BSB	3	3	0	6	5	2	67%
	Chemistry	PSC	9	6	4	7	8	-1	-11%
	Mathematics	MA	3	3	1	3	2	-1	-33%
	Department Total		15	12	5	16	15	0	0%
Theatre	Theatre	THEA	2	2	0	3	3	1	50%
	Department Total		2	2	0	3	3	1	50%
College of Business & Professional Studies			81	60	60	52	51	-30	-37%
Business	Accounting	ACC	1	1	0	0	3	2	200%
	Business	BUS	8	10	12	0	0	-8	-100%
	Business Admin-Entrepreneurship	ENTR	1	1	1	1	0	-1	-100%
	Business Admin - General Bus	GB	6	1	3	14	9	3	50%
	Business Admin - Health Care Mgt	HCM	0	0	2	1	5	5	-
	Business Admin - Human Res Mgt	HRM	0	0	2	2	2	2	-
	Business Admin - Management	MGT	7	3	0	1	1	-6	-86%
	Business Admin - MIS	MIS	8	5	5	10	8	0	0%
	Business Admin - Marketing	MKT	10	8	9	8	8	-2	-20%
	Department Total		41	29	34	37	36	-5	-12%
Culinary Arts	Culinary Arts	CA	4	3	1	0	0	-4	-100%
	Culinary Entrepreneurship	CAEN	12	12	10	7	3	-9	-75%
	Culinology	CUL	1	0	0	1	0	-1	-100%
	Food Art	FDAR	6	4	4	2	2	-4	-67%
	Food Journalism	FDJO	4	1	1	0	0	-4	-100%
	Nutrition/Wellness	NWEL	6	6	4	1	0	-6	-100%
	Department Total		33	26	20	11	5	-28	-85%
Legal Studies	Legal Studies	LGS	7	5	6	4	10	3	43%
	Department Total		7	5	6	4	10	3	43%

Unduplicated Enrollment by Minor | Table 3.3

Fall 2013 - 2017

College/ Department	Minor Description	Minor Code	2013	2014	2015	2016	2017	5 Yr # Ch	5 Yr % Ch
College of Nursing & Health Sciences			4	12	24	33	16	12	300%
Health & Kinesiology ²	Kinesiology - Exercise Science	HKX	0	0	0	2	2	2	-
	Nutrition and Health	NHLT	0	0	2	1	1	1	-
	Public Health Education	PHE	4	12	22	30	13	9	225%
Department Total			4	12	24	33	16	12	300%
Total Minors			200	181	194	192	178	-22	-11%

¹The minor description has been updated. Prior to fall 2016, the description did not include the 'IS-' prefix.

²Prior to fall 2017, the Departments of Education, Psychology & Family Studies, and Health & Kinesiology were housed in the College of Education & Human Sciences. That college has been dissolved.

Unduplicated Enrollment by Second Major | Table 3.4

Fall 2013 - 2017

College/ Department	Second Major/Concentration	Degree	2013	2014	2015	2016	2017	5 Yr # Ch	5 Yr % Ch
College of Arts, Sciences, & Education			13	13	19	21	20	7	54%
Art & Design	Fine Art ¹	[BA]	1	1	0	0	0	-1	-100%
	Fine Arts - Studio - Graphic	[BFA]	0	0	0	0	1	1	-
	Department Total		1	1	0	0	1	0	0%
Communication	Communication	[BA, BS]	0	2	1	1	0	0	-
	Department Total		0	2	1	1	0	0	-
Education ²	Elementary Education	[BS]	0	0	2	2	0	0	-
	Department Total		0	0	2	2	0	0	-
History, Political Science, & Geography	History	[BA]	1	1	1	1	3	2	200%
	Interdisciplinary Studies	[BA, BS]	0	1	0	0	0	0	-
	Political Science	[BA]	1	0	1	1	2	1	100%
	Department Total		2	2	2	2	5	3	150%
Languages, Literature, & Philosophy	English	[BA]	2	1	1	0	0	-2	-100%
	English - Creative Writing	[BA]	0	1	1	2	2	2	-
	Spanish	[BA]	4	2	2	3	2	-2	-50%
	Women's Studies	[BA]	1	1	1	0	0	-1	-100%
	Department Total		7	5	5	5	4	-3	-43%
Music	Music	[BA]	0	0	1	2	1	1	-
	Music - Music Education	[BM]	0	1	1	1	0	0	-
	Department Total		0	1	2	3	1	1	-
Psychology & Family Studies ²	Family Studies	[BS]	0	0	1	3	1	1	-
	Psychology	[BA]	2	1	2	1	0	-2	-100%
	Department Total		2	1	3	4	1	-1	-50%
Sciences & Mathematics	Biology	[BA, BS]	0	0	1	1	0	0	-
	Chemistry	[BS]	1	0	0	1	4	3	300%
	Mathematics	[BA, BS]	0	1	3	1	3	3	-
	Department Total		1	1	4	3	7	6	600%

Unduplicated Enrollment by Second Major | Table 3.4

Fall 2013 - 2017

College/ Department	Second Major/Concentration	Degree	2013	2014	2015	2016	2017	5 Yr # Ch	5 Yr % Ch
Theatre	Theatre	[BA]	0	0	0	1	1	1	-
	Department Total		0	0	0	1	1	1	-
College of Business & Professional Studies			4	3	12	8	5	1	25%
Business	Accounting	[BS]	1	2	4	1	0	-1	-100%
	Business Admin - Entrepreneurship ¹	[BS]	1	1	0	0	0	-1	-100%
	Business Admin - General Bus	[BS]	1	0	2	3	1	0	0%
	Bus Admin - Health Care Mgt	[BS]	0	0	0	1	2	2	-
	Business Admin - Marketing	[BS]	0	0	0	1	1	1	-
	Business Admin - MIS	[BS]	1	0	2	2	1	0	0%
	Department Total		4	3	8	8	5	1	25%
Culinary Arts	Culinary Arts	[BS]	0	0	1	0	0	0	-
	Department Total		0	0	1	0	0	0	-
Legal Studies	Legal Studies	[BA, BS]	0	0	3	0	0	0	-
	Department Total		0	0	3	0	0	0	-
College of Nursing & Health Sciences			1	0	1	3	2	1	100%
Baccalaureate Nursing	Pre-Nursing BSN	[BSN]	0	0	1	0	0	0	-
	Department Total		0	0	1	0	0	0	-
Health & Kinesiology ²	Kinesiology - Exercise Science	[BS]	1	0	0	0	0	-1	-100%
	Kinesiology - Exer Sci - Phys Ther	[BS]	0	0	0	1	0	0	-
	Public Health Education	[BS]	0	0	0	2	2	2	-
	Department Total		1	0	0	3	2	1	100%
Total Enrollment			18	16	32	32	27	9	50%

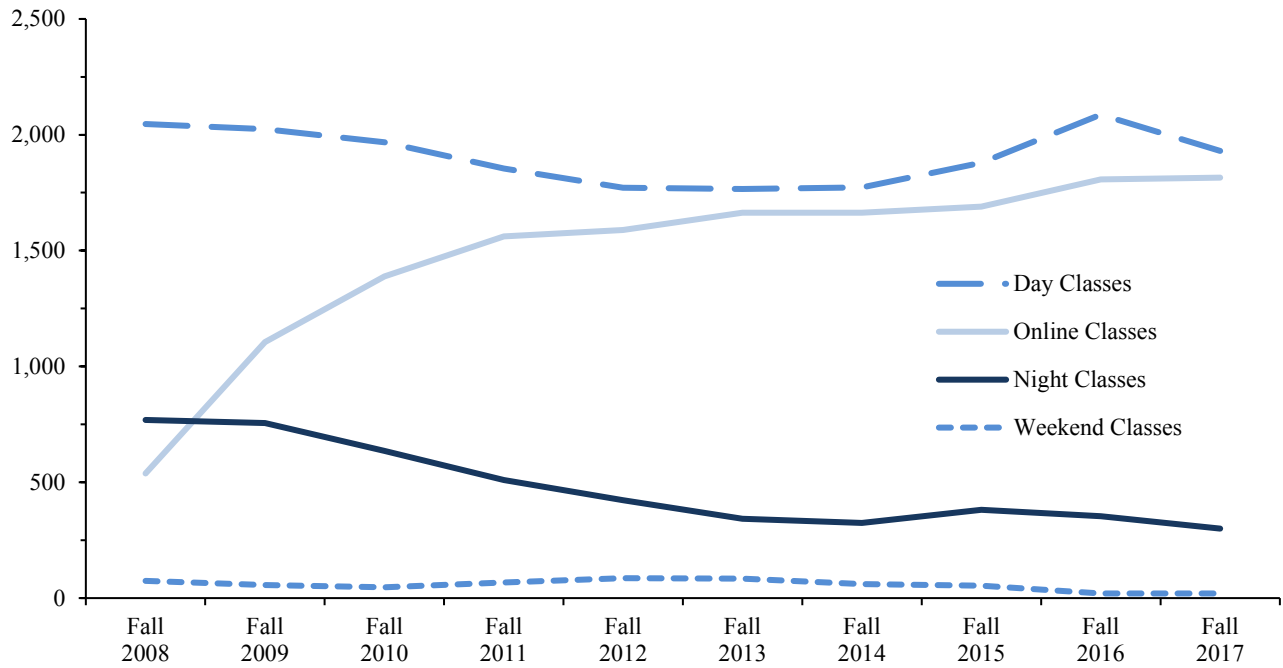
All prior falls have been updated to reflect to the fall 2017 college/department/program structure. Prior to fall 2017, the College of Arts, Sciences, and Education was coded as the College of Arts & Sciences and the College of Nursing & Health Sciences was coded as the College of Nursing & Speech-Language Pathology.

¹These Programs/Concentrations are being phased out.

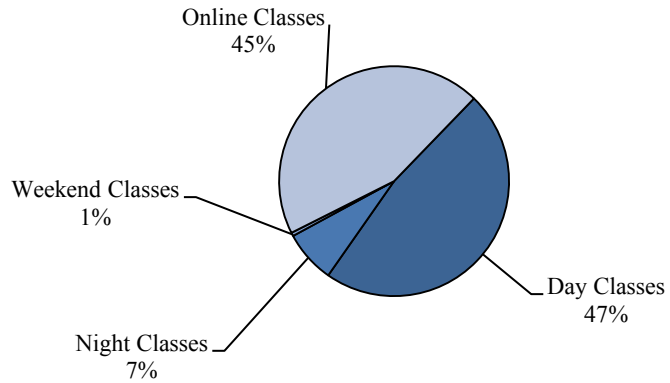
²Prior to fall 2017, the Departments of Education, Psychology & Family Studies, and Health & Kinesiology were housed in the College of Education & Human Sciences. That college has been dissolved.

Class Type Enrollment | Table 3.5
Fall 2008 - Fall 2017

	Fall 2008	Fall 2009	Fall 2010	Fall 2011	Fall 2012	Fall 2013	Fall 2014	Fall 2015	Fall 2016	Fall 2017
Day Classes	2,047	2,025	1,967	1,855	1,771	1,766	1,773	1,879	2,087	1,931
Night Classes	769	755	635	510	422	343	325	381	354	300
Weekend Classes	74	57	46	67	86	84	60	54	20	20
Online Classes	538	1,105	1,389	1,562	1,589	1,664	1,664	1,690	1,808	1,815



Class Type Enrollment Percentages
Fall 2017



Source: Internal Grade Files were used before Fall 2013. IHL Grade Files are used Fall 2013 forward.
 *Students may be enrolled in more than one class type, but headcount is unduplicated within class type.

Credit Hour Generation by College & Department | Table 3.6
AY 2015, 2016, 2017, Summer 2017, & Fall 2017

College/ Department	Academic Year 2015				Academic Year 2016				Academic Year 2017				2015 - 2017		SU 17	FA 17	
	SU 14	FA 14	SP 15	AY Total	SU 15	FA 15	SP 16	AY Total	SU 16	FA 16	SP 17	AY Total	3 AY # Ch	3 AY % Ch			
College of Arts, Sciences, & Education																	
Art & Design	90	741	786	1,617	72	742	944	1,758	87	957	982	2,026	409	25.3%	142	991	
Communication	174	792	882	1,848	198	896	833	1,927	66	981	863	1,910	62	3.4%	120	984	
Education	298	1,396	1,203	2,897	267	1,275	1,216	2,758	286	1,252	1,185	2,723	-174	-6.0%	234	1,071	
History, Political Science, & Geography	156	1,113	1,065	2,334	99	1,092	963	2,154	54	1,308	1,263	2,625	291	12.5%	87	1,082	
Languages, Literature, & Philosophy	910	3,109	2,842	6,861	816	3,460	3,246	7,522	859	4,196	3,653	8,708	1,847	26.9%	850	3,743	
Music	123	658	515	1,296	83	512	509	1,104	93	608	497	1,198	-98	-7.6%	86	521	
Psychology & Family Studies	240	1,503	1,398	3,141	242	1,447	1,465	3,154	242	1,698	1,459	3,399	258	8.2%	90	1,551	
Science & Mathematics	352	3,859	3,460	7,671	332	4,229	3,422	7,983	312	4,312	3,283	7,907	236	3.1%	246	3,894	
Theatre	86	400	519	1,005	87	548	475	1,110	87	613	608	1,308	303	30.1%	138	553	
Total	2,429	13,571	12,670	28,670	2,196	14,201	13,073	29,470	2,086	15,925	13,793	31,804	3,134	10.9%	1,993	14,390	
College of Business & Professional Studies																	
Business	494	3,135	2,918	6,547	373	3,542	3,326	7,241	490	3,903	3,639	8,032	1,485	22.7%	465	4,385	
Culinary Arts	162	1,053	1,056	2,271	108	1,174	1,071	2,353	141	1,106	894	2,141	-130	-5.7%	141	1,124	
Legal Studies	93	399	420	912	120	459	630	1,209	84	495	693	1,272	360	39.5%	81	681	
Total	749	4,587	4,394	9,730	601	5,175	5,027	10,803	715	5,504	5,226	11,445	1,715	17.6%	687	6,190	

Credit Hour Generation by College & Department | Table 3.6
AY 2015, 2016, 2017, Summer 2017, & Fall 2017

College/ Department	Academic Year 2015				Academic Year 2016				Academic Year 2017				2015 - 2017		SU 17	FA 17	
	SU 14	FA 14	SP 15	AY Total	SU 15	FA 15	SP 16	AY Total	SU 16	FA 16	SP 17	AY Total	3 AY # Ch	3 AY % Ch			
College of Nursing & Health Sciences																	
Associate of Science in Nursing	192	1,208	895	2,295	128	1,022	807	1,957	184	1,147	807	2,138	-157	-6.8%	160	1,318	
Bachelor of Science in Nursing	5,925	7,817	7,947	21,689	6,537	6,843	7,304	20,684	5,534	7,357	7,697	20,588	-1,101	-5.1%	5,706	6,853	
Graduate Nursing	312	551	568	1,431	270	538	621	1,429	235	532	566	1,333	-98	-6.8%	226	570	
Health & Kinesiology	722	2,763	2,585	6,070	704	2,295	2,295	5,294	830	2,671	2,650	6,151	81	1.3%	651	2,761	
Nursing	364	300	266	930	336	308	269	913	364	317	256	937	7	0.8%	333	314	
Speech-Language Pathology	94	957	793	1,844	103	943	794	1,840	121	944	835	1,900	56	3.0%	121	1,036	
Total	7,609	13,596	13,054	34,259	8,078	11,949	12,090	32,117	7,268	12,968	12,811	33,047	-1,212	-3.5%	7,197	12,852	
University Classes and Honors																	
University Classes	66	595	420	1,081	45	464	347	856	42	550	357	949	-132	-12.2%	33	431	
Honors	290	110	86	486	369	107	124	600	235	142	128	505	19	3.9%	269	147	
Total	356	705	506	1,567	414	571	471	1,456	277	692	485	1,454	-113	-7.2%	302	578	
University Totals																	
Totals	11,143	32,459	30,624	74,226	11,289	31,896	30,661	73,846	10,346	35,089	32,315	77,750	3,524	4.7%	10,179	34,010	

Source: IHL Course Files (ROTC Classes are excluded)

- Prior to fall 2017, the Department of Education, the Department of Psychology & Family Studies, and the Department of Health & Kinesiology were housed in the College of Education & Human Sciences. That college has been dissolved.
- All prior terms have been updated to reflect to the fall 2017 college/department structure. Prior to fall 2017, the College of Arts, Sciences, and Education was coded as the College of Arts & Sciences and the College of Nursing & Health Sciences was coded as the College of Nursing & Speech-Language Pathology.
- General Studies courses prior to fall 2017 are coded within the department of Health & Kinesiology. Fall 2017 forward, those courses will be coded in the Department of Business.

Online Credit Hour Generation by College & Department | Table 3.7
AY 2015, 2016, 2017, Summer 2017, & Fall 2017

College/ Department	Academic Year 2015				Academic Year 2016				Academic Year 2017				2015 - 2017		SU 17	FA 17	
	SU 14	FA 14	SP 15	AY Total	SU 15	FA 15	SP 16	AY Total	SU 16	FA 16	SP 17	AY Total	3 AY # Ch	3 AY % Ch			
College of Arts, Sciences, & Education																	
Art & Design	60	0	0	60	39	0	72	111	48	0	69	117	57	95.0%	63	0	
Communication	156	297	333	786	198	341	320	859	66	240	257	563	-223	-28.4%	120	257	
Education	129	204	240	573	120	291	456	867	144	370	738	1,252	679	118.5%	153	627	
History, Political Science, & Geography	87	279	288	654	78	345	294	717	51	387	318	756	102	15.6%	87	359	
Languages, Literature, & Philosophy	808	691	760	2,259	768	785	966	2,519	788	937	968	2,693	434	19.2%	808	916	
Music	102	0	0	102	75	0	0	75	84	0	0	84	-18	-17.6%	78	0	
Psychology & Family Studies	180	447	579	1,206	185	627	813	1,625	242	823	685	1,750	544	45.1%	72	707	
Science & Mathematics	171	473	479	1,123	206	410	376	992	291	307	442	1,040	-83	-7.4%	246	440	
Theatre	0	36	186	222	15	153	132	300	0	111	144	255	33	14.9%	0	147	
Total	1,693	2,427	2,865	6,985	1,684	2,952	3,429	8,065	1,714	3,175	3,621	8,510	1,525	21.8%	1,627	3,453	
College of Business & Professional Studies																	
Business	450	2,238	2,106	4,794	327	2,365	2,546	5,238	440	2,748	2,852	6,040	1,246	26.0%	417	3,221	
Culinary Arts	138	126	189	453	54	192	153	399	75	354	111	540	87	19.2%	45	267	
Legal Studies	93	306	303	702	120	264	447	831	84	351	414	849	147	20.9%	81	360	
Total	681	2,670	2,598	5,949	501	2,821	3,146	6,468	599	3,453	3,377	7,429	1,480	24.9%	543	3,848	

Online Credit Hour Generation by College & Department | Table 3.7
AY 2015, 2016, 2017, Summer 2017, & Fall 2017

College/ Department	Academic Year 2015				Academic Year 2016				Academic Year 2017				2015 - 2017		SU 17	FA 17		
	SU 14	FA 14	SP 15	AY Total	SU 15	FA 15	SP 16	AY Total	SU 16	FA 16	SP 17	AY Total	3 AY # Ch	3 AY % Ch				
College of Nursing & Health Sciences																		
Associate of Science in Nursing	0	129	0	129	0	0	0	0	0	78	0	78	-51	-39.5%	0	120		
Bachelor of Science in Nursing	5,547	6,179	6,421	18,147	6,141	5,267	5,478	16,886	5,150	5,664	5,873	16,687	-1,460	-8.0%	5,256	5,165		
Graduate Nursing	21	14	14	49	12	27	0	39	0	18	0	18	-31	-63.3%	0	0		
Health & Kinesiology	644	1,969	2,090	4,703	677	1,642	1,772	4,091	824	2,057	2,179	5,060	357	7.6%	615	2,226		
Nursing	36	183	259	478	36	150	259	445	25	168	208	401	-77	-16.1%	42	150		
Speech-Language Pathology	0	63	36	99	0	78	0	78	39	42	39	120	21	21.2%	39	0		
Total	6,248	8,537	8,820	23,605	6,866	7,164	7,509	21,539	6,038	8,027	8,299	22,364	-1,241	-5.3%	5,952	7,661		
University Classes and Honors																		
University Classes	57	123	72	252	45	54	128	227	42	75	92	209	-43	-17.1%	33	63		
Honors	0	0	0	0	0	0	0	0	0	0	0	0	-	-	0	0		
Total	57	123	72	252	45	54	128	227	42	75	92	209	-43	-17.1%	33	63		
University Totals																		
Totals	8,679	13,757	14,355	36,791	0	9,096	12,991	14,212	36,299	0	8,393	14,730	15,389	38,512	1,721	4.7%	8,155	15,025

Source: IHL Course Files (ROTC Classes are excluded)

- Prior to fall 2017, the Department of Education, the Department of Psychology & Family Studies, and the Department of Health & Kinesiology were housed in the College of Education & Human Sciences. That college has been dissolved.
- All prior terms have been updated to reflect to the fall 2017 college/department structure. Prior to fall 2017, the College of Arts, Sciences, and Education was coded as the College of Arts & Sciences and the College of Nursing & Health Sciences was coded as the College of Nursing & Speech-Language Pathology.
- General Studies courses prior to fall 2017 are coded within the department of Health & Kinesiology. Fall 2017 forward, those courses will be coded in the Department of Business.

**Degrees Awarded by IHL Official Academic Program Inventory (API) | Table 3.8
Academic Year 2016-2017**

	Degrees Awarded		Degrees Awarded
Associate of Science	41	Bachelor of Science in Nursing	399
513801 Nursing	41	513801 Nursing	399
Bachelor of Applied Science	20	Bachelor of Technology	4
520201 Business Administration	20	520101 Professional Studies	4
Bachelor of Arts	38	Master of Arts	1
260101 Biology	0	050207 Women's Leadership	1
090101 Communications	1	Master of Arts in Teaching	1
230101 English	12	131205 Secondary Teacher Education	1
240101 General Studies	0	Master of Business Administration	11
540101 History	1	520201 Business Administration	11
309999 Interdisciplinary Studies	4	Master of Education	18
220302 Legal Studies	0	130401 Educational Leadership	8
270101 Mathematics	0	131004 Gifted Studies	4
500901 Music	3	131315 Reading/Literacy	6
451001 Political Science	0	Master of Fine Arts	5
420101 Psychology	13	231302 Creative Writing	0
450101 Social Sciences	0	500506 Physical Theatre	5
160905 Spanish	1	Master of Science	35
500101 Theatre	3	131307 Health Education	23
050207 Women's Studies	0	510203 Speech-Language Pathology	12
Bachelor of Fine Arts	11	Master of Science in Nursing	33
131302 Art Education	0	513801 Family Nurse Clinician	33
500101 Fine Arts	11	Doctor of Nursing Practice	6
Bachelor of Music	5	513818 Nursing Practice	6
500901 Music	5	Total Degrees Awarded	882
Bachelor of Science	254	Certificate Programs	2
520301 Accounting	10	Post Master's Certificates	2
260101 Biology	16	Family Nurse Clinician	2
520201 Business Administration	50		
400501 Chemistry	1		
090101 Communications	13		
120599 Culinary Arts	19		
120509 Culinary Science/Culinology	0		
131202 Elementary Education	18		
190704 Family Studies	10		
240101 General Studies	21		
309999 Interdisciplinary Studies	1		
310501 Kinesiology	20		
220302 Legal Studies	9		
270101 Mathematics	1		
400101 Physical Sciences	1		
512207 Public Health Education	45		
450101 Social Sciences	1		
510203 Speech Pathology	18		

Social Sciences (BA & BS) and Art Education (BFA) are being phased out.

Degrees Awarded by CIP, Major/Concentration, Race/Ethnicity, and Gender | Table 3.9
Academic Year 2016-2017

CIP	Major Desc/ Degree	Total	American Indian or Alaskan Native		Asian		Black/African American		Hispanic		Multiple Race		Native Hawaiian or Pacific Islander		Non-Resident Alien		White	
			F	M	F	M	F	M	F	M	F	M	F	M	F	M	F	M
Arts & Sciences Total		81	0	0	0	0	13	3	1	1	0	0	0	0	2	0	46	15
050207	Women's Leadership MA	1															1	0
090101	Communication BA	1															1	0
	Communication BS	13				2	2										6	3
160905	Spanish BA	1															1	0
230101	English BA	3				1	0										2	0
	English - Creative Writing BA	5						0	1								3	1
	English-Teacher Certification BA	4															4	0
260101	Biology BS	16				6	0	1	0					1	0		6	2
270101	Mathematics - Teacher Cert BS	1															1	0
309999	Interdisciplinary Studies BA	4															4	0
	Interdisciplinary Studies BS	1															1	0
400101	Physical Science-Teacher Cert BS	1															0	1
400501	Chemistry BS	1															0	1
450101	Social Sciences BS	1															0	1
500101	Fine Arts-Studio Art BFA	5				2	0										3	0
	Fine Arts-Studio-Graphic BFA	6				1	1										4	0
	Theatre BA	3															1	2
500506	Physical Theatre MFA	5												1	0		2	2
500901	Music BA	3				1	0										1	1
	Music Education BM	3															2	1
	Music Therapy BM	2															2	0
540101	History-Teacher Certification BA	1															1	0

Degrees Awarded by CIP, Major/Concentration, Race/Ethnicity, and Gender | Table 3.9
Academic Year 2016-2017

CIP	Major Desc/ Degree	Total	American Indian or Alaskan Native		Asian		Black/African American		Hispanic		Multiple Race		Native Hawaiian or Pacific Islander		Non-Resident Alien		White	
			F	M	F	M	F	M	F	M	F	M	F	M	F	M	F	M
Business & Professional Studies Total		123	0	0	0	0	34	6	0	0	0	0	0	0	2	1	59	21
120599	Culinary Arts BS	19					7	0									11	1
220302	Legal Studies BS	9					3	0							1	0	3	2
520101	Prof Studies - Legal Admin BT	1															1	0
	Prof Studies - Mgt Info Sys BT	3					1	1									0	1
520201	Bus Admin - Culin Art - Gulf BAS	1															1	0
	Bus Admin - Culin Art - Hinds BAS	1															1	0
	Bus Admin - Legal Admin BAS	2					1	0									0	1
	Bus Admin-Health Care Mgt BAS	1															1	0
	Bus Admin-Health Care Mgt BS	5					4	0									1	0
	Business Admin - General Bus BAS	6					2	0									3	1
	Business Admin - General Bus BS	19					3	1									13	2
	Business Admin - Human Res Mgt BAS	2															2	0
	Business Admin - Management BS	11					3	2									5	1
	Business Admin - Marketing BS	5					2	1									2	0
	Business Admin - MIS BAS	7					1	0									4	2
	Business Admin - MIS BS	10					3	1									2	4
Business Administration MBA	11					4	0									2	5	
520301	Accounting BS	10													1	1	7	1

Degrees Awarded by CIP, Major/Concentration, Race/Ethnicity, and Gender | Table 3.9
Academic Year 2016-2017

CIP	Major Desc/ Degree	Total	American Indian or Alaskan Native		Asian		Black/African American		Hispanic		Multiple Race		Native Hawaiian or Pacific Islander		Non-Resident Alien		White	
			F	M	F	M	F	M	F	M	F	M	F	M	F	M	F	M
Education & Human Sciences Total		169	0	0	0	0	87	10	0	0	1	0	0	0	1	0	57	13
130401	Educational Leadership MED	8					3	0									5	0
131004	Gifted Studies MED	4															3	1
131202	Elementary Education BS	18					1	0									15	2
131205	Secondary Teacher Ed (Alt Rte) MAT	1															1	0
131307	Health Education MS	23					10	3									7	3
131315	Reading/Literacy MED	6					5	0			1	0						
190704	Family Studies BS	10					7	0									2	1
240101	General Studies BS	21					13	2									6	0
310501	Exercise Sci-Physical Therapy BS	8					1	2									3	2
	Kinesiology - Teaching BS	1															0	1
	Kinesiology-Exercise Science BS	11					7	1									1	2
420101	Psychology BA	13					6	0									6	1
512207	Public Health Education BS	45					34	2							1	0	8	0
Nursing & Speech-Language Pathology Total		509	2	0	1	0	124	6	1	0	0	0	0	1	1	0	331	42
510203	Speech/Language Pathology BS	18															17	1
	Speech-Language Pathology MS	12															12	0
513801	Associate of Science Nursing ASN	41	1	0			7	2	1	0							28	2
	Bachelor of Science Nursing BSN	63			1	0	3	0									58	1

**Degrees Awarded by CIP, Major/Concentration, Race/Ethnicity, and Gender | Table 3.9
Academic Year 2016-2017**

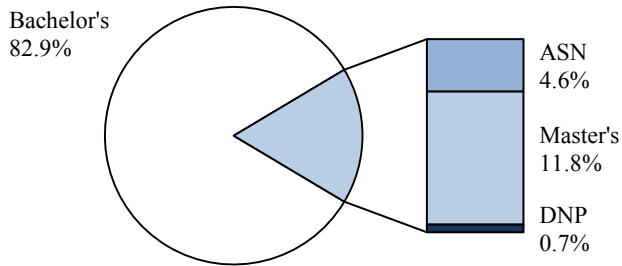
CIP	Major Desc/ Degree	Total	American Indian or Alaskan Native		Asian		Black/African American		Hispanic		Multiple Race		Native Hawaiian or Pacific Islander		Non-Resident Alien		White	
			F	M	F	M	F	M	F	M	F	M	F	M	F	M	F	M
513801 (Cont.)	Family Nurse Practitioner MSN	33					3	1									25	4
	Nursing - BSN - Tupelo BSN	336	1	0			111	2					0	1	1	0	186	34
513818	Nursing Practice DNP	6					0	1									5	0

Grand Total		882	2	0	1	0	258	25	2	1	1	0	0	1	6	1	493	91
-------------	--	-----	---	---	---	---	-----	----	---	---	---	---	---	---	---	---	-----	----

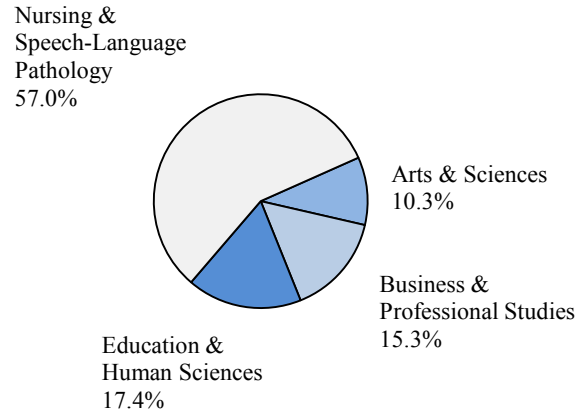
The following programs are being phased out: Social Sciences (BA & BS) and Art Education (BFA). Professional Studies (BT) was renamed to Business Administration (BAS). Four Professional Studies degrees were awarded before the program was renamed.

Summary of Degrees Awarded | Table 3.10
Academic Year 2016-2017

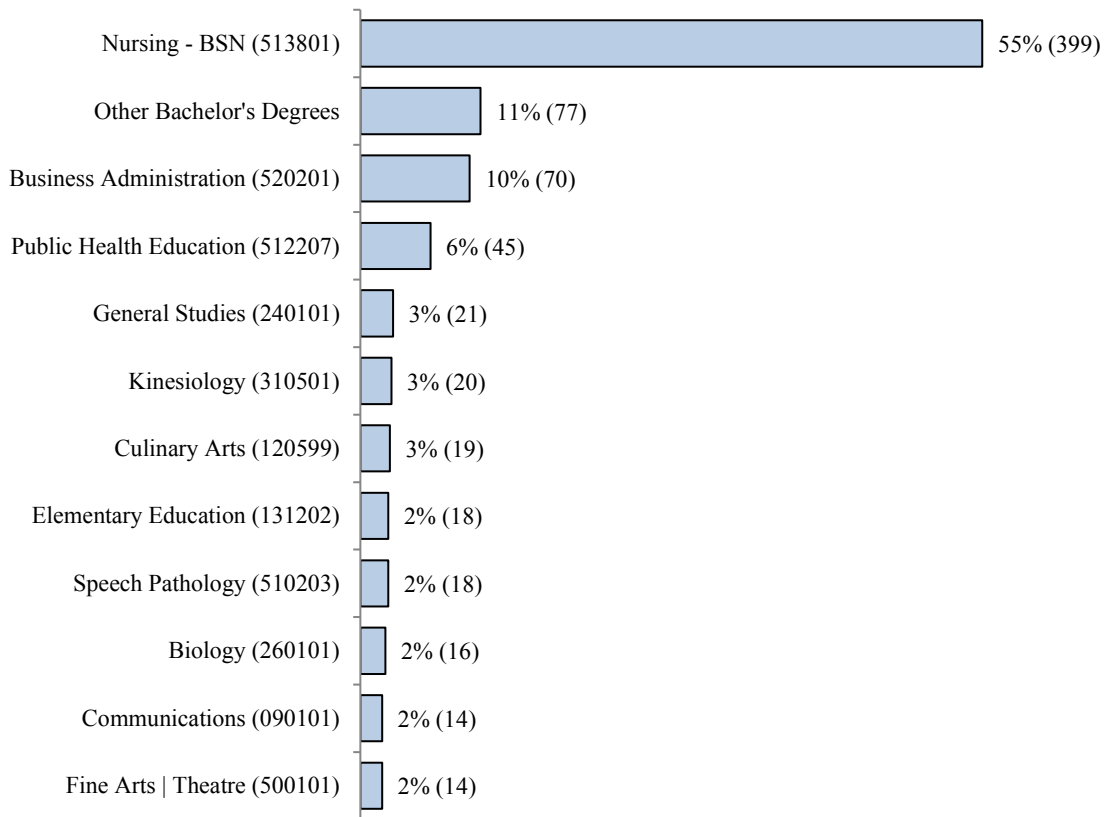
Degrees Awarded by Level



Bachelor's Degrees Awarded by College



Most Popular Bachelor's Degrees by CIP Code



Other Bachelor's Degrees include all Bachelor's programs with 13 or less degrees awarded.

Fine Arts and Theatre are combined because they share the same CIP code.

Percentages may not equal 100% due to rounding.

History of Degrees Awarded by Program and CIP | Table 3.11
Academic Years 2013 - 2017

College / Program	CIP	2013	2014	2015	2016	2017	5 Yr # Ch	5 Yr % Ch
Arts & Sciences Total		90	83	89	86	81	-9	-10%
Art Education ¹	131302	1	1	0	0	0	-1	-100%
Biology	260101	23	16	15	14	16	-7	-30%
Chemistry	400501	2	0	5	3	1	-1	-50%
Communications	090101	16	8	14	12	14	-2	-13%
English	230101	15	18	18	18	12	-3	-20%
Fine Arts Theatre ²	500101	15	17	20	9	14	-1	-7%
History	540101	2	4	3	4	1	-1	-50%
Interdisciplinary Studies	309999	0	2	0	1	5	5	100%
Mathematics	270101	3	1	2	3	1	-2	-67%
Music	500901	2	2	5	3	8	6	300%
Physical Sciences	400101	0	1	0	0	1	1	100%
Physical Theatre - Master's	500506	1	5	0	7	5	4	400%
Political Science	451001	6	3	1	5	0	-6	-100%
Social Sciences ¹	450101	3	4	4	7	1	-2	-67%
Spanish	160905	1	1	1	0	1	0	0%
Women's Leadership - Master's	050207	0	0	0	0	1	1	100%
Women's Studies	050207	0	0	1	0	0	0	0%
Business & Professional Studies Total		98	89	104	92	123	25	26%
Accounting	520301	8	10	11	15	10	2	25%
Business Administration ³	520201	41	33	44	32	70	29	71%
Business Administration - Master's ⁴	520201	0	0	0	0	11	11	100%
Culinary Arts	120599	15	21	20	20	19	4	27%
Global Commerce - Master's ⁴	520208	0	0	6	0	0	0	0%
Legal Studies	220302	19	17	10	10	9	-10	-53%
Professional Studies ³	520101	15	7	12	14	4	-11	-73%
Public Safety Administration ¹	440401	0	1	1	1	0	0	0%

History of Degrees Awarded by Program and CIP | Table 3.11
Academic Years 2013 - 2017

College / Program	CIP	2013	2014	2015	2016	2017	5 Yr # Ch	5 Yr % Ch
Education & Human Sciences Total		176	170	165	137	169	-7	-4%
Differentiated Instruction - Master's ¹	130301	1	0	0	1	0	-1	-100%
Educational Leadership - Master's	130401	7	5	9	0	8	1	14%
Elementary Education	131202	39	29	23	15	18	-21	-54%
Family Studies	190704	7	7	6	11	10	3	43%
General Studies	240101	45	40	26	25	21	-24	-53%
Gifted Studies - Master's	131004	4	1	2	4	4	0	0%
Health Education - Master's	131307	12	17	7	16	23	11	92%
Kinesiology	310501	16	17	26	14	20	4	25%
Psychology	420101	21	18	18	20	13	-8	-38%
Public Health Education	512207	13	33	39	24	45	32	246%
Reading/Literacy - Master's	131315	7	2	8	7	6	-1	-14%
Secondary Teacher Education - Master's	131205	4	1	1	0	1	-3	-75%
Nursing & Speech-Language Pathology Total		453	395	502	549	509	56	12%
Nursing - ASN	513801	47	42	46	41	41	-6	-13%
Nursing - BSN	513801	330	283	380	435	399	69	21%
Family Nurse Clinician - Master's	513801	37	31	38	37	33	-4	-11%
Doctor of Nursing Practice	513818	0	5	2	1	6	6	100%
Speech Pathology	510203	30	22	26	24	18	-12	-40%
Speech-Language Pathology - Master's	510203	9	12	10	11	12	3	33%
Grand Total		817	737	860	864	882	65	8%

¹These programs are being phased out.

²Fine Arts and Theatre are combined because they share the same CIP code.

³In AY 2017, Professional Studies (BT) was renamed to Business Administration (BAS). Four Professional Studies degrees were awarded before the program was renamed.

⁴In AY 2017, Global Commerce (MS) was renamed to Business Administration (MBA).

History of Degrees Awarded by Program, CIP, and Gender | Table 3.12
Academic Years 2013 - 2017

College / Program	CIP	2013		2014		2015		2016		2017		Total
		F	M	F	M	F	M	F	M	F	M	
Arts & Sciences Total		72	18	57	26	70	19	56	30	62	19	429
Art Education ¹	131302	1	0	1	0							2
Biology	260101	19	4	14	2	11	4	7	7	14	2	84
Chemistry	400501	2	0			4	1	3	0	0	1	11
Communications	090101	10	6	6	2	12	2	5	7	9	5	64
English	230101	13	2	12	6	16	2	13	5	10	2	81
Fine Arts Theatre ²	500101	13	2	11	6	14	6	7	2	11	3	75
History	540101	1	1	3	1	2	1	4	0	1	0	14
Interdisciplinary Studies	309999			2	0			1	0	5	0	8
Mathematics	270101	3	0	1	0	2	0	2	1	1	0	10
Music	500901	2	0	0	2	3	2	2	1	6	2	20
Physical Sciences	400101			0	1					0	1	2
Physical Theatre - Master's	500506	1	0	2	3			5	2	3	2	18
Political Science	451001	4	2	2	1	1	0	3	2			15
Social Sciences ¹	450101	2	1	2	2	3	1	4	3	0	1	19
Spanish	160905	1	0	1	0	1	0			1	0	4
Women's Leadership - Master's	050207									1	0	1
Women's Studies	050207					1	0					1
Business & Professional Studies Total		77	21	70	19	71	33	65	27	95	28	506
Accounting	520301	5	3	7	3	9	2	11	4	8	2	54
Business Administration ³	520201	34	7	26	7	31	13	22	10	54	16	220
Business Administration - Master's ⁴	520201									6	5	11
Culinary Arts	120599	11	4	15	6	10	10	14	6	18	1	95
Global Commerce - Master's ⁴	520208					3	3					6
Legal Studies	220302	15	4	16	1	8	2	9	1	7	2	65
Professional Studies ³	520101	12	3	5	2	10	2	9	5	2	2	52

History of Degrees Awarded by Program, CIP, and Gender | Table 3.12
Academic Years 2013 - 2017

College / Program	CIP	2013		2014		2015		2016		2017		Total
		F	M	F	M	F	M	F	M	F	M	
Public Safety Administration ¹	440401			1	0	0	1	0	1			3
Education & Human Sciences Total		158	18	156	14	141	24	121	16	146	23	817
Differentiated Instruction - Master's ¹	130301	1	0					1	0			2
Educational Leadership - Master's	130401	2	5	4	1	3	6			8	0	29
Elementary Education	131202	38	1	29	0	22	1	15	0	16	2	124
Family Studies	190704	7	0	7	0	6	0	11	0	9	1	41
General Studies	240101	41	4	35	5	20	6	23	2	19	2	157
Gifted Studies - Master's	131004	4	0	1	0	2	0	4	0	3	1	15
Health Education - Master's	131307	12	0	15	2	7	0	13	3	17	6	75
Kinesiology	310501	12	4	15	2	19	7	10	4	12	8	93
Psychology	420101	20	1	17	1	16	2	18	2	12	1	90
Public Health Education	512207	11	2	30	3	38	1	19	5	43	2	154
Reading/Literacy - Master's	131315	7	0	2	0	8	0	7	0	6	0	30
Secondary Teacher Education - Master's	131205	3	1	1	0	0	1			1	0	7
Nursing & Speech-Language Pathology Total		413	40	362	33	448	54	495	54	460	49	2,408
Nursing - ASN	513801	43	4	37	5	42	4	36	5	37	4	217
Nursing - BSN	513801	297	33	260	23	337	43	392	43	361	38	1,827
Family Nurse Clinician - Master's	513801	34	3	26	5	31	7	31	6	28	5	176
Doctor of Nursing Practice	513818			5	0	2	0	1	0	5	1	14
Speech Pathology	510203	30	0	22	0	26	0	24	0	17	1	120
Speech-Language Pathology - Master's	510203	9	0	12	0	10	0	11	0	12	0	54
Grand Total		720	97	645	92	730	130	737	127	763	119	4,160

¹These programs are being phased out.

²Fine Arts and Theatre are combined because they share the same CIP code.

³In AY 2017, Professional Studies (BT) was renamed to Business Administration (BAS). Four Professional Studies degrees were awarded before the program was renamed.

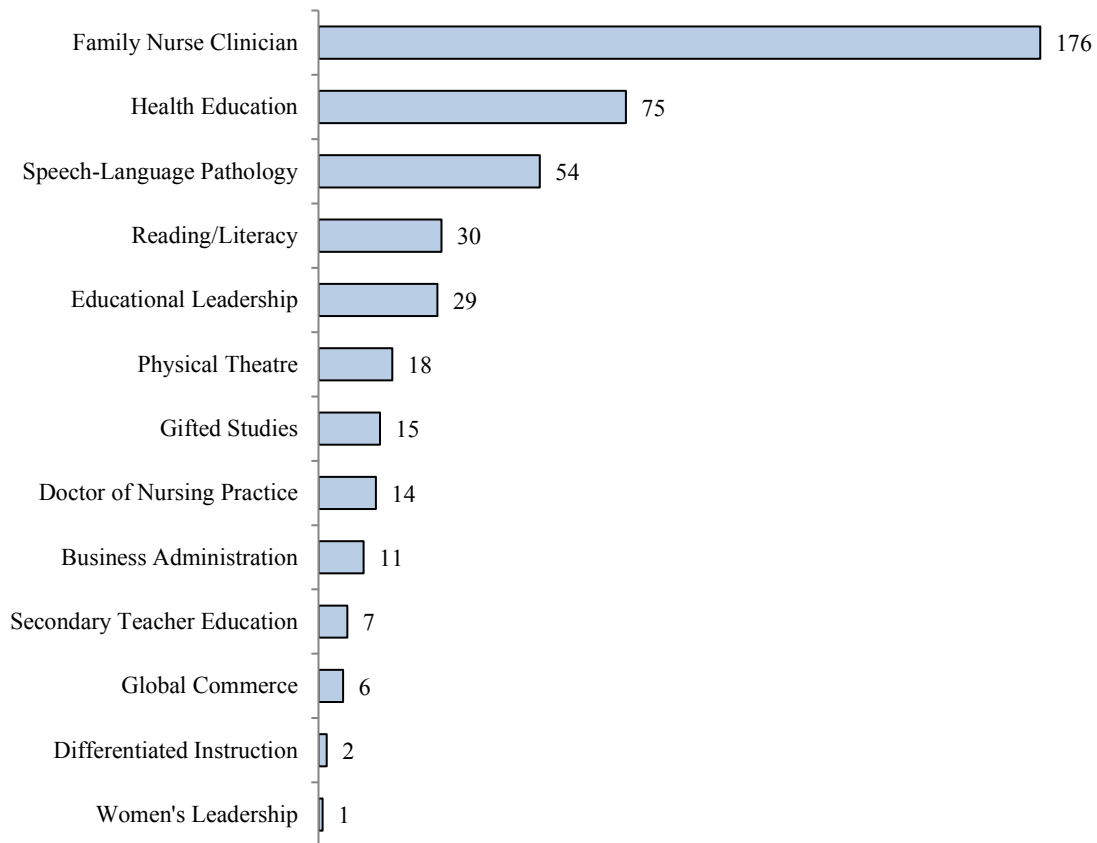
⁴In AY 2017, Global Commerce (MS) was renamed to Business Administration (MBA).

Top Bachelor's & Graduate Degrees Awarded in the last 5 Years | Table 3.13
Academic Years 2013 - 2017

Top 10 Bachelor's Degrees Awarded in the Last 5 Years

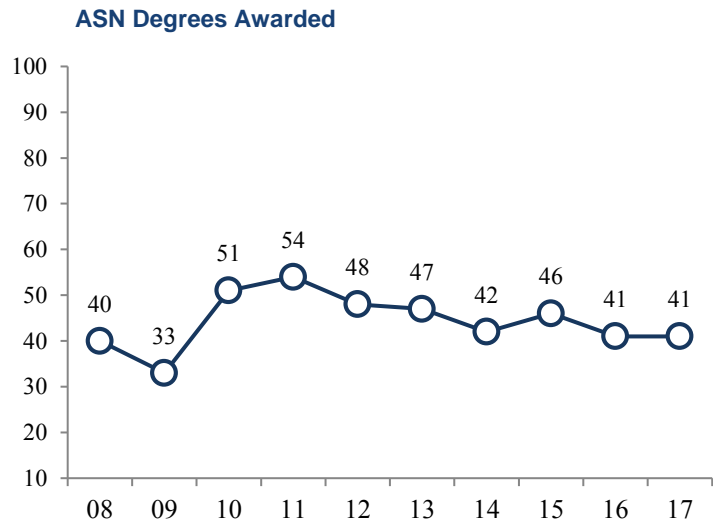
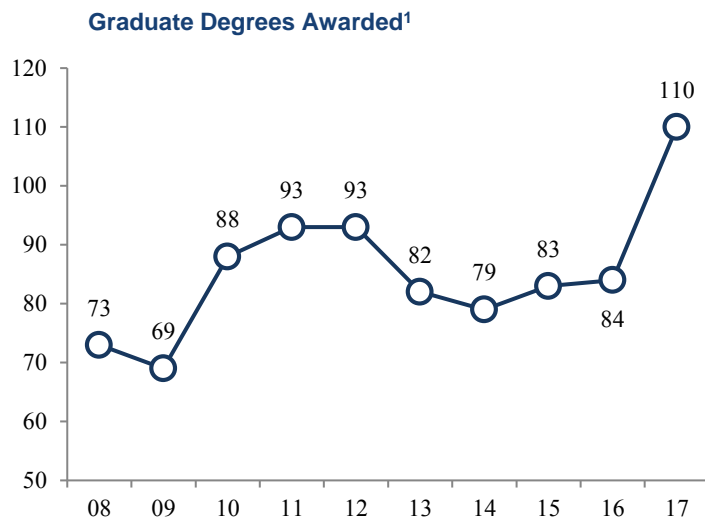
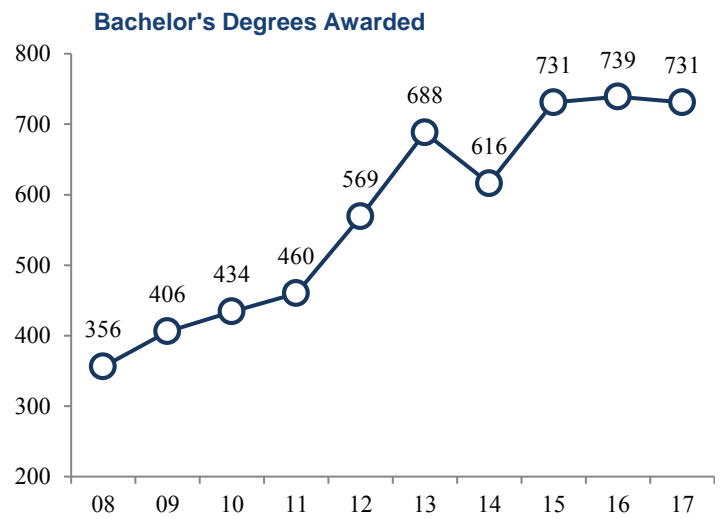
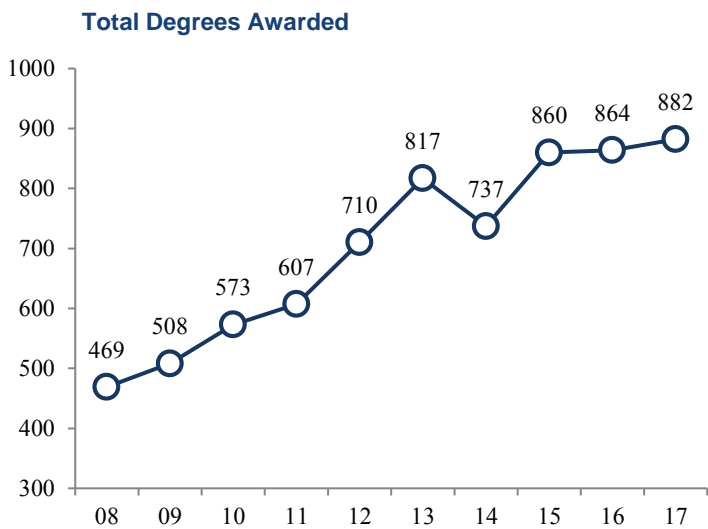
1	Nursing - BSN	1827	52%	6	Speech Pathology	120	3%
2	Business Administration	220	6%	7	Culinary Arts	95	3%
3	General Studies	157	4%	8	Kinesiology	93	3%
4	Public Health Education	154	4%	9	Psychology	90	3%
5	Elementary Education	124	4%	10	Biology	84	2%

Graduate Degrees Awarded in the Last 5 Years



History of Degrees Awarded by Academic Level | Table 3.14
Academic Years 2008 - 2017

Degree	Degrees Awarded					Total	5 Yr # Ch	5 Yr % Ch
	2013	2014	2015	2016	2017			
ASN	47	42	46	41	41	217	-6	-13%
Bachelor's	688	616	731	739	731	3,505	43	6%
Master's	82	74	81	83	104	424	22	27%
DNP	-	5	2	1	6	14	-	-
Total	817	737	860	864	882	4,160	65	8%



¹Includes DNP Degrees

Degrees Awarded by CIP and Major/Concentration | Table 3.15
Academic Years 2013 - 2017

CIP	Major/Concentration	Degree	2013	2014	2015	2016	2017	Grand Total
Arts & Sciences Total			90	83	89	86	81	429
050207	Women's Leadership	MA					1	1
050207	Women's Studies	BA			1			1
090101	Communication	BA	6	4	4	3	1	18
		BS	10	4	10	9	13	46
131302	Art Education ¹	BFA	1	1				2
160905	Spanish	BA		1	1		1	3
	Spanish - Teacher Certification	BA	1					1
230101	English	BA	7	7	9	5	3	31
	English - Creative Writing	BA	3	9	6	6	5	29
	English - Teacher Certification	BA	5	2	3	7	4	21
260101	Biology	BS	23	16	15	14	16	84
	Biology - Teacher Certification	BS						0
270101	Mathematics	BS	1	1		2		4
	Mathematics - Teacher Certification	BS	2		2	1	1	6
309999	Interdisciplinary Studies	BA		1		1	4	6
		BS		1			1	2
400101	Physical Science - Teacher Certification	BS		1			1	2
400501	Chemistry	BS	2		5	3	1	11
450101	Social Sciences ¹	BA			1	1		2
		BS	2	3	2	6	1	14
	Social Sciences - Secondary Ed ¹	BA						0
		BS	1	1	1			3
451001	Political Science	BA	6	3	1	5		15
500101	Fine Art ¹	BA	2					2
	Theatre	BA	4	5	6	4	3	22
	Fine Arts - Studio Art	BFA	5	4	9	5	5	28
	Fine Arts - Studio - Graphic	BFA	4	8	5		6	23
500506	Physical Theatre	MFA	1	5		7	5	18
500901	Music	BA			2	1	3	6
	Music Education	BM	1	2			3	6
	Music Therapy	BM	1		3	2	2	8
540101	History	BA	2	3	1	4		10
	History - Public History	BA			2			2
	History - Teacher Certification	BA		1			1	2

Degrees Awarded by CIP and Major/Concentration | Table 3.15
Academic Years 2013 - 2017

CIP	Major/Concentration	Degree	2013	2014	2015	2016	2017	Grand Total
Business & Professional Studies Total			98	89	104	92	123	506
120599	Culinary Arts	BS	15	21	20	20	19	95
220302	Legal Studies	BA	6	2	2	2		12
		BS	13	15	8	8	9	53
440401	Public Safety - Ad/FSM/Gen Bus ¹	BS		1		1		2
	Public Safety - Ad/FSM/Law & Gov ¹	BS			1			1
520101 ²	Prof Studies - Culin Art - Gulf	BT				1		1
	Prof Studies - Culin Art - Hinds	BT				1		1
	Prof Studies - Culin Art - Main	BT				1		1
	Prof Studies - Gen Bus	BT	10	1	2	2		15
	Prof Studies - Human Res	BT		1	2	5		8
	Prof Studies - Legal Admin	BT	1	1	3	1	1	7
	Prof Studies - Mgt Info Sys	BT	4	4	5	3	3	19
	520201 ²	Business Admin - Culin Art - Gulf	BAS					1
Business Admin - Culin Art - Hinds		BAS					1	1
Business Admin - General Bus		BAS					6	6
Business Admin - Health Care Mgt		BAS					1	1
Business Admin - Human Res Mgt		BAS					2	2
Business Admin - Legal Admin		BAS					2	2
Business Admin - MIS		BAS					7	7
Business Admin - Entrepreneurship ¹		BS		1		1		2
Business Admin - General Business		BS	20	13	20	15	19	87
Business Admin - Health Care Mgt		BS					5	5
Business Admin - Human Res Mgt		BS			1	2		3
Business Admin - Management		BS	10	6	11	4	11	42
Business Admin - Marketing		BS	5	12	8	4	5	34
Business Admin - MIS		BS	6	1	4	6	10	27
520201	Business Administration ³	MBA					11	11
520208	Global Commerce ³	MS			6			6
520301	Accounting	BS	8	10	11	15	10	54
Education & Human Sciences Total			176	170	165	137	169	817
130301	Differentiated Instruction ¹	MED	1			1		2
130401	Educational Leadership	MED	7	5	9		8	29
131004	Gifted Studies	MED	4	1	2	4	4	15
131202	Elementary Education	BS	39	29	23	15	18	124

Degrees Awarded by CIP and Major/Concentration | Table 3.15
Academic Years 2013 - 2017

CIP	Major/Concentration	Degree	2013	2014	2015	2016	2017	Grand Total
131205	Secondary Teacher Ed (Alt Rte)	MAT	4	1	1		1	7
131307	Health Education	MS	12	17	7	16	23	75
131315	Reading/Literacy	MED	7	2	8	7	6	30
190704	Family Studies	BS	7	7	6	11	10	41
240101	General Studies	BA		1				1
		BS	45	39	26	25	21	156
	Exercise Sci-Physical Therapy	BS	4	4	14	9	8	39
310501	Kinesiology - Exercise Science	BS	10	13	10	4	11	48
	Kinesiology - Teaching	BS	2		2	1	1	6
420101	Psychology	BA	21	18	18	20	13	90
512207	Public Health Education	BS	13	33	39	24	45	154
Nursing & Speech-Language Pathology Total			453	395	502	549	509	2408
510203	Speech-Language Pathology	BS	30	22	26	24	18	120
	Speech-Language Pathology	MS	9	12	10	11	12	54
	Associate of Science Nursing	ASN	47	42	46	41	41	217
	Bachelor of Science Nursing	BSN	54	58	37	56	63	268
513801	Nursing - BSN - Tupelo	BSN	276	225	343	379	336	1559
	Family Nurse Practitioner	MSN		31	37	36	33	137
	Primary Care: Family	MSN	37					37
	Psychiatric Mental Health ¹	MSN			1	1		2
513818	Doctor of Nursing Practice	DNP		5	2	1	6	14
Grand Total			817	737	860	864	882	4160

¹These programs/concentrations are being phased out

²In AY 2017, Professional Studies (BT) was renamed to Business Administration (BAS). Four Professional Studies degrees were awarded before the program was renamed.

³In AY 2017, Global Commerce (MS) was renamed to Business Administration (MBA).

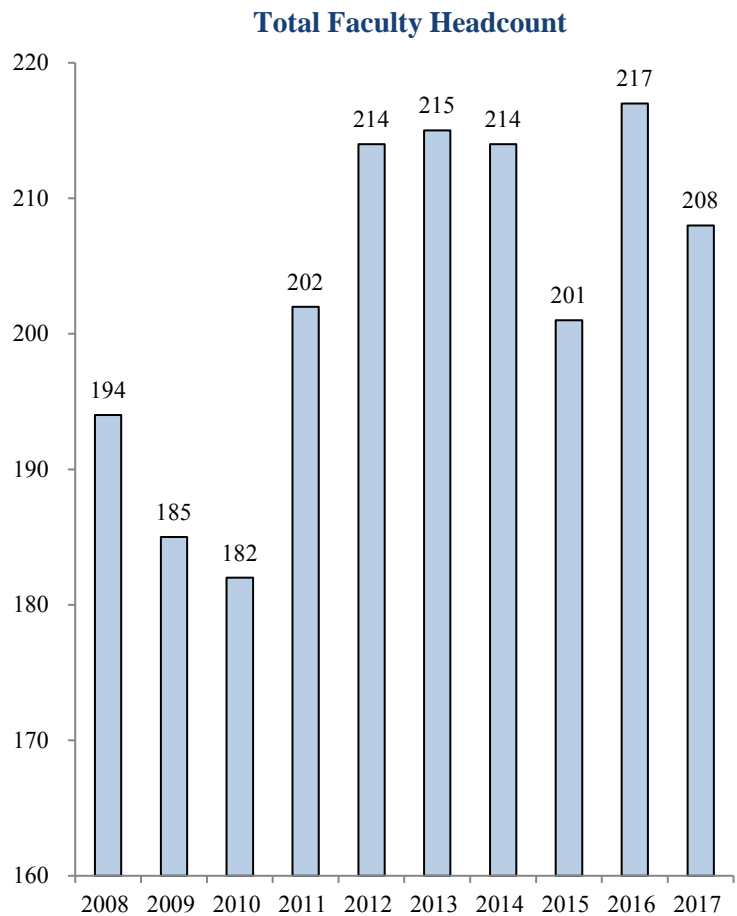
Faculty Profile | Table 4.1
Fall 2008 - 2017

Faculty			
Fall Sem.	Full-time	Part-time	Total
2008	135	59	194
2009	134	51	185
2010	130	52	182
2011	136	66	202
2012	130	84	214
2013	135	80	215
2014	138	76	214
2015	137	64	201
2016	142	75	217
2017	140	68	208

Full-time Faculty										
Fall Sem.	Rank				Degree				Contract	
	Prof.	Asso.	Asst.	Inst.	Term.	Spec.	Mstr.	Bach.	Acad	Fiscal
2008	28	17	39	51	76	0	56	3	110	25
2009	26	21	36	51	75	0	56	3	111	23
2010	27	20	34	49	76	0	52	2	106	24
2011	30	23	30	53	82	1	51	2	109	27
2012	33	18	31	48	83	1	46	0	100	30
2013	34	18	42	41	89	1	44	1	105	30
2014	34	24	35	45	93	0	43	2	108	30
2015	35	23	38	41	95	0	40	2	108	29
2016	34	26	40	42	96	0	45	1	109	33
2017	35	27	38	40	95	1	43	1	107	33

Full-time Faculty					
Fall Sem.	Gender		Race/Ethnicity		
	Male	Female	Black	White	Other
2008	48	87	5	122	8
2009	51	83	5	120	9
2010	48	82	7	116	7
2011	50	86	7	123	6
2012	47	83	4	120	6
2013	49	86	7	121	7
2014	47	91	6	125	7
2015	45	92	6	123	8
2016	44	98	5	129	8
2017	41	99	6	125	9

Part-time Faculty					
Fall Sem.	Gender		Race/Ethnicity		
	Male	Female	Black	White	Other
2013	18	62	7	72	1
2014	20	56	10	65	1
2015	14	50	7	55	2
2016	15	60	8	65	2
2017	16	52	7	58	3



SOURCE: Office of Academic Affairs

Faculty Credit Hour Production by Course Level | Table 4.2
Fall 2016 & 2017

Fall 2016 Student Credit Hours (SCH) by Faculty Terminal Degree Status

	Lower CH	Upper CH	Graduate CH	Total CH
Terminal Degrees	11,430	7,224	1,714	20,368
Non-Terminal Degrees	6,711	7,911	99	14,721
TOTAL	18,141	15,135	1,813	35,089

Fall 2017 Student Credit Hours (SCH) by Faculty Terminal Degree Status

	Lower CH	Upper CH	Graduate CH	Total CH
Terminal Degrees	11,168	7,758	1,651	20,577
Non-Terminal Degrees	6,167	7,119	147	13,433
TOTAL	17,335	14,877	1,798	34,010

Fall 2016 Student Credit Hours (SCH) by Faculty Full-time/Part-time Status

	Lower CH	Upper CH	Graduate CH	Total CH
Full-time Faculty	12,899	12,058	1,615	26,572
Part-time Faculty	5,242	3,077	198	8,517
TOTAL	18,141	15,135	1,813	35,089

Fall 2017 Student Credit Hours (SCH) by Faculty Full-time/Part-time Status

	Lower CH	Upper CH	Graduate CH	Total CH
Full-time Faculty	12,452	12,543	1,680	26,675
Part-time Faculty	4,883	2,334	118	7,335
TOTAL	17,335	14,877	1,798	34,010

Source: IHL Course files (ROTC Credit Hours are excluded) & IHL Faculty files.

Full-time faculty: SCHs generated by full-time employees in EEO category 2, faculty.

Part-time faculty: SCHs generated by part-time employees in EEO category 2, faculty. SCHs generated by all other employees not in EEO category 2 (Administrators and staff) are included with part-time faculty.

Full-time Employees by EEOC

Term	10 - Administrator		20 - Faculty		30 - Professional		40 - Technical		50 - Clerical		60 - Skilled Crafts		70 - Service/Maintenance		Total
	Female	Male	Female	Male	Female	Male	Female	Male	Female	Male	Female	Male	Female	Male	
Fall 2014	20	9	91	47	52	11	4	11	45	1	0	0	5	11	307
Fall 2015	22	11	92	45	52	13	4	12	44	1	0	0	4	12	312
Fall 2016	23	12	98	44	46	12	3	11	43	1	0	0	4	11	308
Fall 2017	22	12	99	41	45	14	2	13	43	1	0	0	3	9	304

Term	Black			White			Other			Black			White			Other			Total			
	Black	White	Other	Black	White	Other	Black	White	Other	Black	White	Other	Black	White	Other	Black	White	Other				
Fall 2014	2	27	0	6	124	8	13	49	1	2	13	0	14	32	0	0	0	0	8	8	0	307
Fall 2015	2	31	0	6	123	8	17	47	1	2	13	1	15	30	0	0	0	0	7	8	1	312
Fall 2016	2	33	0	5	129	8	13	41	4	2	12	0	14	30	0	0	0	0	7	7	1	308
Fall 2017	2	32	0	6	125	9	15	40	4	3	12	0	14	30	0	0	0	0	5	6	1	304

Part-time Employees by EEOC

Term	10 - Administrator		20 - Faculty		30 - Professional		40 - Technical		50 - Clerical		60 - Skilled Crafts		70 - Service/Maintenance		Total
	Female	Male	Female	Male	Female	Male	Female	Male	Female	Male	Female	Male	Female	Male	
Fall 2014	0	0	56	20	15	5	1	0	5	2	0	0	2	1	107
Fall 2015	0	0	50	14	11	4	1	0	6	2	0	0	1	3	92
Fall 2016	0	0	60	15	22	3	0	1	12	2	0	0	1	3	119
Fall 2017	0	0	52	16	14	3	0	1	8	1	1	0	6	3	105

Term	Black			White			Other			Black			White			Other			Total			
	Black	White	Other	Black	White	Other	Black	White	Other	Black	White	Other	Black	White	Other	Black	White	Other				
Fall 2014	0	0	0	10	65	1	3	16	1	0	1	0	2	4	1	0	0	0	3	0	0	107
Fall 2015	0	0	0	7	55	2	1	11	3	0	0	1	3	5	0	0	0	0	2	2	0	92
Fall 2016	0	0	0	8	65	2	5	18	2	0	1	0	4	9	1	0	0	0	2	2	0	119
Fall 2017	0	0	0	7	58	3	4	11	2	0	1	0	2	7	0	0	1	0	6	3	0	105

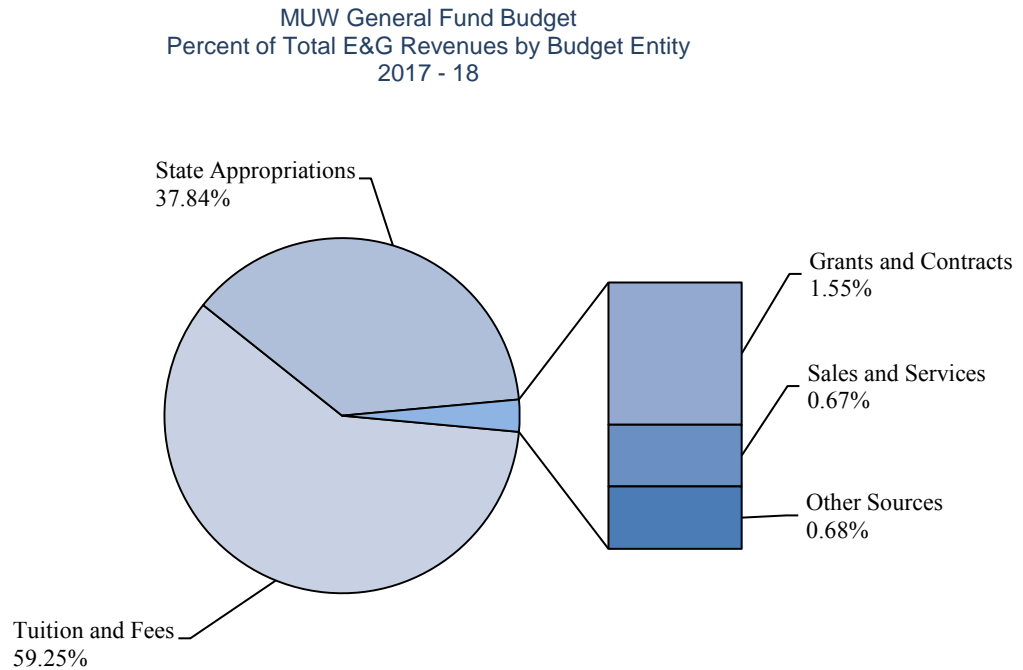
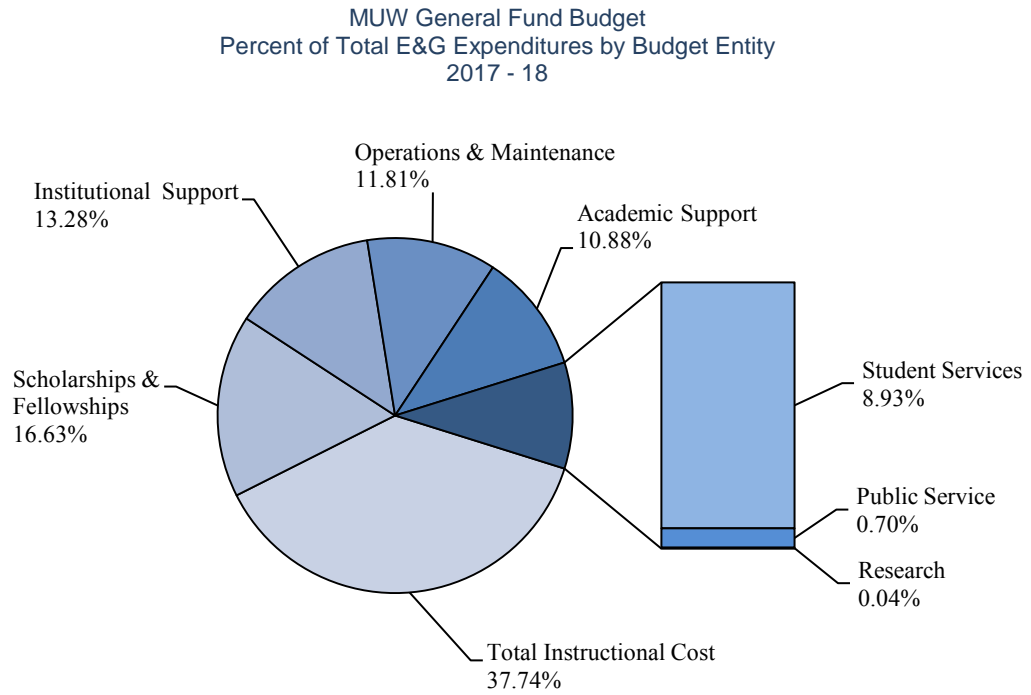
Source: IHL Employee Files

**Summary of Budgeted E&G Revenues and Expenditures | Table 5.1
FY 2017-18 & FY 2016-17**

	2017-18		2016-17			
CURRENT FUND REVENUES						
Tuition and Fees	\$	23,283,974	59.25%	\$	20,609,092	53.72%
State Govt. Appropriations						
General Support	\$	12,369,270	31.48%	\$	13,988,764	36.47%
Washington Scholarship	\$	9,375	0.02%	\$	9,375	0.02%
Interest Funds	\$	9,389	0.02%	\$	9,389	0.02%
MS Gov. School	\$	150,000	0.38%	\$	157,500	0.41%
Education Enhancement Fund	\$	2,260,369	5.75%	\$	2,256,887	5.88%
Capital Projects	\$	-	0.00%	\$	375,879	0.98%
Funding for Efficiencies	\$	62,514	0.16%	\$	108,256	0.28%
Geospatial Licenses	\$	9,406	0.02%	\$	9,406	0.02%
Sub-Total	\$	14,870,323	37.84%	\$	16,915,456	44.10%
Local Govt. Appropriations	\$	-	0.00%	\$	-	0.00%
Total Govt. Appropriations	\$	14,870,323	37.84%	\$	16,915,456	44.10%
Grants and Contracts						
Federal Grants and Contracts	\$	30,000	0.08%	\$	30,000	0.08%
State Grants and Contracts	\$	190,925	0.49%	\$	190,925	0.50%
Other Grants and Contracts	\$	389,974	0.99%	\$	290,000	0.76%
Sub-Total	\$	610,899	1.55%	\$	510,925	1.33%
Sales and Services	\$	265,000	0.67%	\$	210,443	0.55%
Other Sources	\$	268,000	0.68%	\$	115,000	0.30%
TOTAL CURRENT REVENUES	\$	39,298,196	100.00%	\$	38,360,916	100.00%
CURRENT FUND EXPENDITURES						
Total Instructional Cost	\$	14,831,746	37.74%	\$	14,938,588	38.94%
Research	\$	14,000	0.04%	\$	13,788	0.04%
Public Service	\$	275,910	0.70%	\$	294,585	0.77%
Academic Support	\$	4,274,563	10.88%	\$	4,481,346	11.68%
Student Services	\$	3,509,090	8.93%	\$	2,642,782	6.89%
Institutional Support	\$	5,216,892	13.28%	\$	5,248,826	13.68%
Operations & Maintenance	\$	4,640,667	11.81%	\$	4,930,218	12.85%
Scholarships & Fellowships	\$	6,535,329	16.63%	\$	5,810,785	15.15%
Mandatory Transfers	\$	-	0.00%	\$	-	0.00%
Non-Mandatory Transfers	\$	-	0.00%	\$	-	0.00%
TOTAL CURRENT EXPENDITURES	\$	39,298,196	100.00%	\$	38,360,916	100.00%

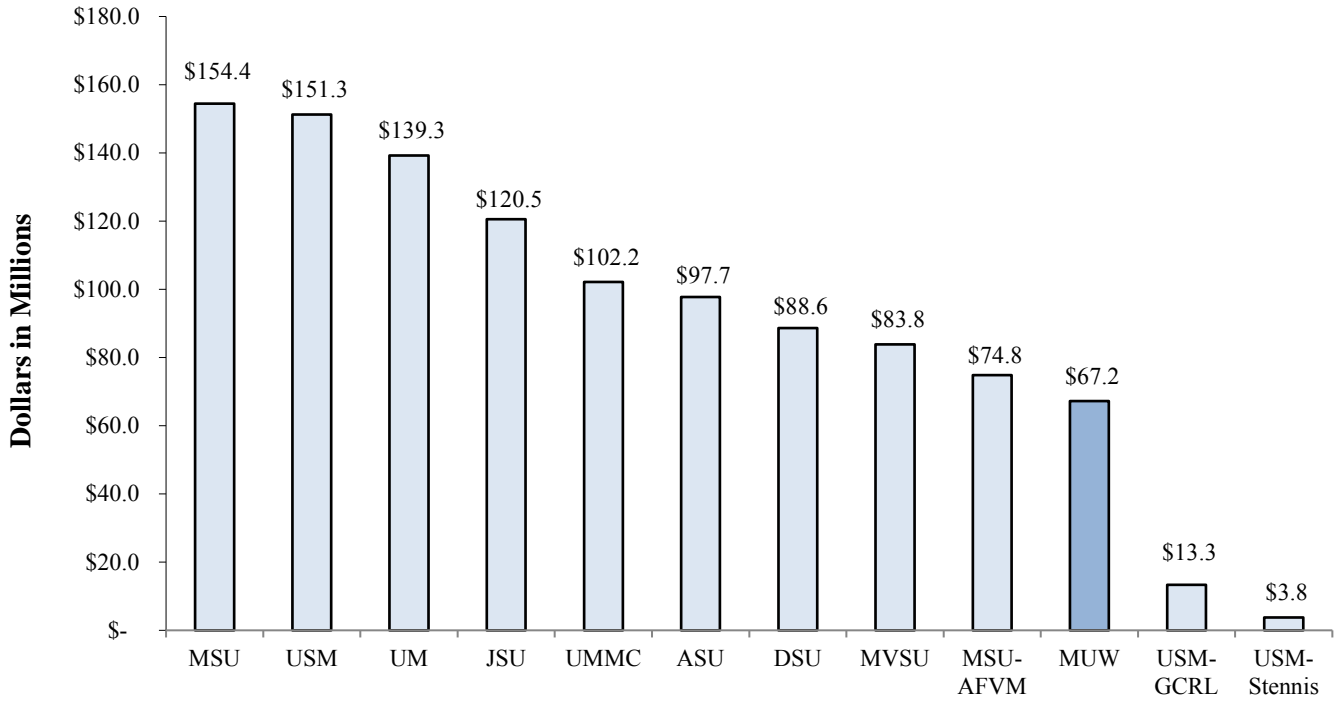
SOURCE: MUW General Fund Budgets

**MUW General Fund Budget Percent of Total E&G Revenues and Expenditures by Budget Entity | Table 5.2
FY 2017-18**

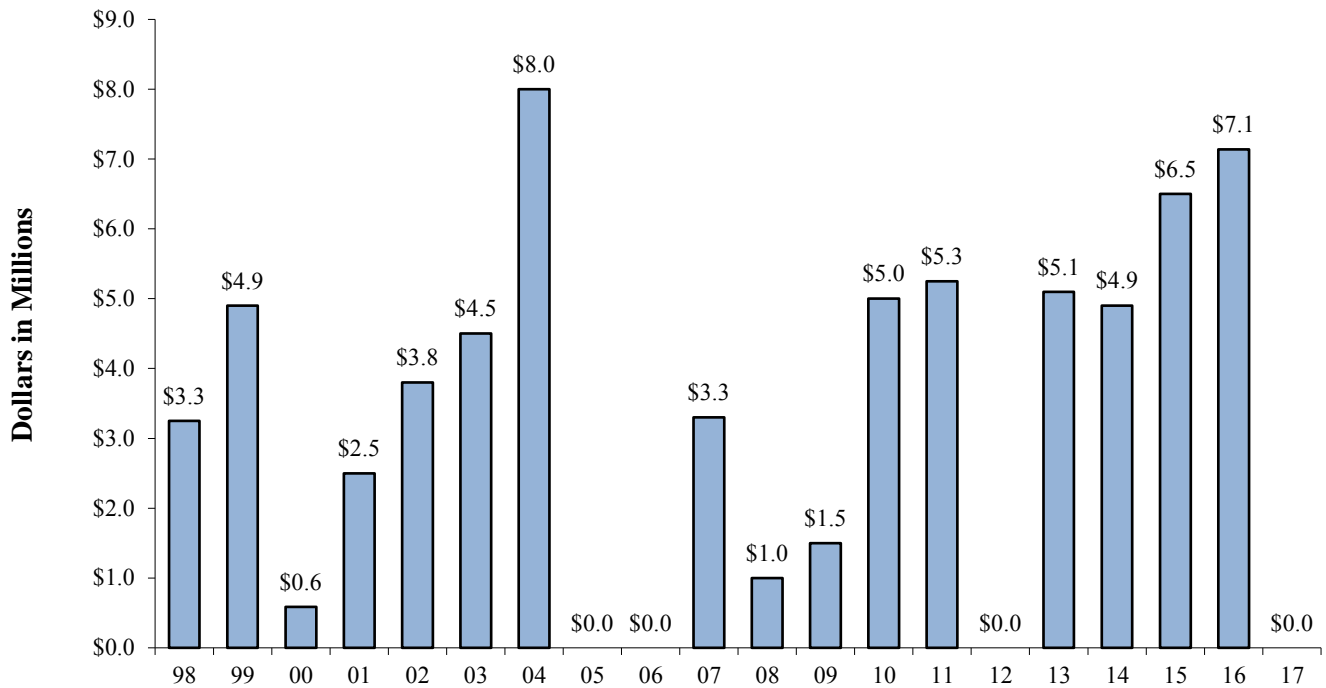


Authorization of State General Obligation Bonds for IHL & MUW | Table 5.3

Authorization of State General Obligation Bonds for IHL - FY 1997-98 through FY 2016-17



Authorization of State General Obligation Bonds for MUW - FY 1997-98 through FY 2016-17



The \$35.6 million Ayers bonds divided between ASU, JSU, and MVSU are not included.
MS Emergency Mgt. Agency disaster recovery funds are not included.

**Mississippi University for Women
Accreditation Information (Updated 02.13.2018)**

Mississippi University for Women (MUW) is accredited by the Southern Association of Colleges and Schools Commission on Colleges to award degrees at the levels of associate, baccalaureate, masters, and doctorate. Contact the Commission on Colleges at 1866 Southern Lane, Decatur, Georgia 30033-4097 or call 404-679-4500 for questions about the accreditation at MUW. Initial accreditation was received in 1921. MUW's last reaffirmation was in 2014; its next reaffirmation is scheduled for 2024 (<http://www.sacscoc.org/details.asp?instid=49760>). Carla Lowery, Chief Information Officer, is the SACSCOC campus liaison.

Below is a table of accredited or approved MUW programs. Costs listed are estimates based on the best data available at the time of compilation.

Accredited Program	Campus Contact for Accreditation	Accrediting Body (Acronym)	Website of Accrediting Body	Last Visit	Next Visit	Required Institutional Action/Interim Reports	Accreditation Agency Action	Annual Fee: Membership	Size of Team/ Length of Visit
Associate of Science in Nursing	Dr. Sheila Adams and Dr. Maria Scott	1. Accrediting Commission for Education in Nursing (ACEN)	www.acenursing.org	Fall 2013	Fall 2021	Submit Annual Compliance Report in October of each year	Continuing accreditation for the max allowed of 8 years.	\$2,875	3 team members/ 3 days at \$2,745/member = \$8,235
		2. MS Institutions of Higher Learning, Board of Trustees (IHL BOT)	www.mississippi.edu/ihl	Fall 2013	Fall 2021	Submit Annual Compliance Report in October of each year	Next visit scheduled Fall 2021.	\$300 MS Council of Deans and Directors of Schools of Nursing for all nursing programs	3 team members/ 3 days = \$2,000

Accredited Program	Campus Contact for Accreditation	Accrediting Body (Acronym)	Website of Accrediting Body	Last Visit	Next Visit	Required Institutional Action/Interim Reports	Accreditation Agency Action	Annual Fee: Membership	Size of Team/ Length of Visit
Bachelor of Science in Nursing	Dr. Sheila Adams and Dr. Tammie McCoy	1. Commission on Collegiate Nursing Education (CCNE)	www.cneaccreditation.org	Spring 2010	Spring 2020	Submit Annual Compliance Report in <u>October</u> of each year	Continuing accreditation for the maximum allowed, 10 yrs.	\$3,772 total for the BSN, MSN, DNP and the Post-Graduate APRN Certificate Programs.	4 team members/3 days for the BSN, MSN, DNP and the Post-Graduate APRN Certificate Programs at \$1,750/team member = \$7,000
		2. Mississippi Institutions of Higher Learning, Board of Trustees (IHL BOT)	www.mississippi.edu/ihl	Spring 2010	Spring 2020	Submit Annual Compliance Report in <u>October</u> of each year	Next visit scheduled for spring 2020.	\$300 MS Council of Deans and Directors of Schools of Nursing for all nursing programs	3 team members/ 3 days for the BSN, MSN, DNP and Post-Graduate APRN Certificate Programs = \$2,000

Accredited Program	Campus Contact for Accreditation	Accrediting Body (Acronym)	Website of Accrediting Body	Last Visit	Next Visit	Required Institutional Action/Interim Reports	Accreditation Agency Action	Annual Fee: Membership	Size of Team/ Length of Visit
Masters of Science in Nursing	Dr. Sheila Adams and Dr. Teresa Hamill	1. Commission on Collegiate Nursing Education (CCNE)	www.cneaccreditation.org	Spring 2010	Spring 2020	Submit Annual Compliance Report in <u>October</u> of each year	Continuing accreditation for the maximum allowed, 10 yrs.	\$3,772 total for the BSN, MSN, DNP and the Post-Graduate APRN Certificate Programs.	4 team members/3 days for the BSN, MSN, DNP and the Post-Graduate APRN Certificate Programs at \$1,750/team member = \$7,000
		2. Mississippi Institutions of Higher Learning. Board of Trustees (IHL BOT)	www.mississippi.edu/ihl	Spring 2010	Spring 2020	Submit Annual Compliance Report in <u>October</u> of each year	Next visit scheduled for spring 2020.	\$300 MS Council of Deans and Directors of Schools of Nursing for all nursing programs	3 team members/ 3 days for the BSN, MSN, DNP and Post-Graduate APRN Certificate Programs = \$2,000
Master of Science in Speech- Language Pathology	Dr. Sheila Adams and Dr. Joy Townsend	Council on Academic Accreditation (CAA) of the American Speech-Language-Hearing Association (ASHA)	caa.asha.org	Spring 2011	Spring 2019	Submit Annual Compliance Report in <u>August</u> of each year	Continuing accreditation for the maximum allowed, 8 yrs.	\$1,910	3 team members/ 3 days

Accredited Program	Campus Contact for Accreditation	Accrediting Body (Acronym)	Website of Accrediting Body	Last Visit	Next Visit	Required Institutional Action/Interim Reports	Accreditation Agency Action	Annual Fee: Membership	Size of Team/ Length of Visit
Doctor of Nursing Practice and Post Graduate APRN Certificate Program	Dr. Sheila Adams and Dr. Teresa Hamill	1. Commission on Collegiate Nursing Education (CCNE)	www.cneaccreditation.org	Fall 2015	Fall 2020		Accreditation in 2015 for the maximum allowed, 5 yrs.	\$3,772 total for the BSN, MSN, DNP and the Post-Graduate APRN Certificate Programs.	4 team members/3 days for the BSN, MSN, DNP and the Post-Graduate APRN Certificate Programs at \$1,750/team member = \$7,000
		2. Mississippi Institutions of Higher Learning Board of Trustees (IHL Board)	www.mississippi.edu/ihl	Fall 2015	Fall 2020		Accreditation in 2015 for the maximum allowed, 5 yrs.	\$300 MS Council of Deans and Directors of Schools of Nursing for all nursing programs	3 team members/ 3 days for the BSN, MSN, DNP and Post-Graduate APRN Certificate Programs = \$2,000
Bachelor of Science in Accounting and Bachelor of Science in Business Administration	Dr. Scott Tollison and Dr. Marty Brock	Accreditation Council for Business Schools and Programs (ACBSP)	www.acbsp.org	Spring 2010	Spring 2020	No interim report required. Periodic report to ACBSP due every two years. Last self-report submitted 09-30-08	Continuing accreditation for the max allowed, 10 yrs	\$1,850	3 team members/3 days

Accredited Program	Campus Contact for Accreditation	Accrediting Body (Acronym)	Website of Accrediting Body	Last Visit	Next Visit	Required Institutional Action/Interim Reports	Accreditation Agency Action	Annual Fee: Membership	Size of Team/ Length of Visit
Bachelor of Arts in Music and Bachelor of Music in Music	Dr. Julia Mortyakova	National Association of Schools of Music (NASM)	www.nasm.arts-accredit.org	2014	Spring 2024	Submit annual Higher Education Arts Data Services (HEADS) report.	Continuing accreditation for the max allowed, 10 yrs	\$1,407, invoiced on September 1st of each year	2 team members/2 days
Bachelor of Fine Arts	Shawn Dickey	National Association of Schools of Art and Design (NASAD)	www.nsad.arts-accredit.org	Spring 2012	Spring 2022	Submit annual Higher Education Arts Data Services (HEADS) report.	Continuing accreditation for the max allowed, 10 yrs	\$1682, invoiced annually on July 1st	2 team members, 1-2 day visit
Bachelor of Arts/Science in Legal Studies	Wesley Garrett, J.D.	American Bar Association (ABA)	www.americanbar.org/groups/paralegals.html	Spring 2016	Spring 2023	Interim report every 3.5 years. Reapproval report every 7 yrs.	Continuing approval for max allowed, 7 yrs	\$2,600, due on or before May 1st each year	2 team members/1 to 1.5 days
Bachelor of Science in Family Studies	Dr. Holleen Krogh	National Council on Family Relations (NCFR)	www.ncfr.org	Spring 2014	Spring 2019	Typically no visit is required, but documentation must be submitted every 5 yrs.	Continuing approval for the max allowed, 5 yrs	\$75, due on or before April 1st each year except renewal year when fee is \$550.	None required; NCFR can send 1-2 team members/1-2 Days

Accredited Program	Campus Contact for Accreditation	Accrediting Body (Acronym)	Website of Accrediting Body	Last Visit	Next Visit	Required Institutional Action/Interim Reports	Accreditation Agency Action	Annual Fee: Membership	Size of Team/ Length of Visit
All teacher education programs	Dr. Brian Anderson	1. National Council for Accreditation in Teacher Education (NCATE), becoming the Council for Accreditation for Educator Preparation (CAEP)	www.ncate.org	Fall 2012	Fall 2019	Reports submitted annually to address areas for improvement	Continuing accreditation	\$3,500 (varies based on number of graduates)	NA
		2. Mississippi Department of Education (MDE)	www.mde.k12.ms.us	Spring 2011		Report submitted annually.	Continuing accreditation	None	1 day
		3. Specialized Professional Associations (SPAs):				SPA reports submitted about one year prior to NCATE visit.	Continuing accreditation		NA

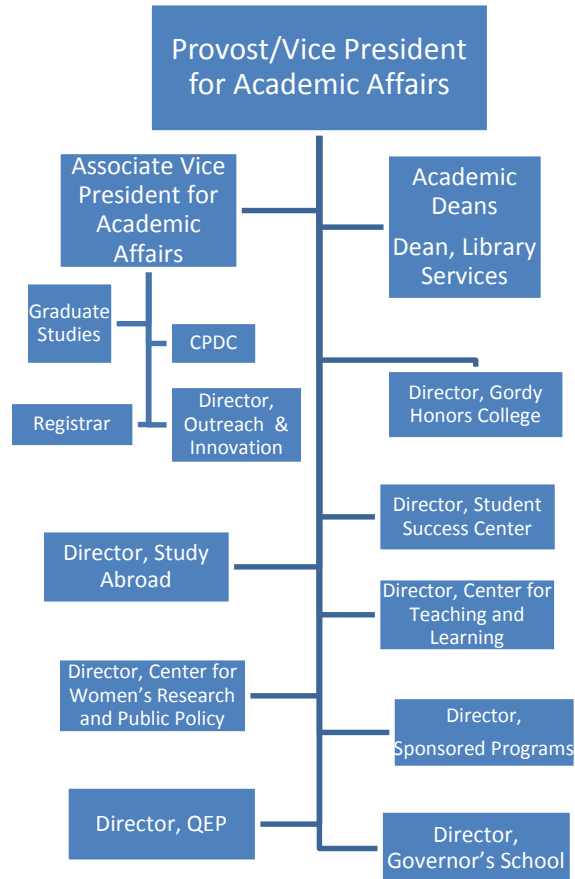
**Mississippi University for Women
Accreditation Information (Updated 02.13.2018)**

Below is a table of nationally recognized MUW programs. All of these programs submitted portfolios for national recognition by the indicated Specialized Professional Associations in compliance with the National Council for the Accreditation of Teacher Education (Council for Accreditation of Educator Preparation) accrediting process. The next site visit for NCATE is fall 2019.

Accredited Program	Campus Contact for Accreditation	Accrediting Body (Acronym)	Website of Accrediting Body	Last* Visit	Next Visit	Required Institutional Action/Interim Reports	Accreditation Agency Action	Annual Fee: Membership	Size of Team/ Length of Visit
B.S. –Kinesiology, Teaching Certification	Dr. Mark Bean	American Alliance for Heath, Physical Education (AAHPERD)	www.aahperd.org			Submitted an initial report 9-15-12, submitted a response to conditions, 9-15-12			Offsite electronic submission and review
Bachelors, Elementary Education	Dr. Brian Anderson	Association for Childhood Education International (ACEI)	www.acei.org			Submitted an initial report 9-15-12, submitted a response to conditions, 3-15-12	Nationally recognized through 2019		Offsite electronic submission and review
Spanish – Teacher Certification	Ms. Erinn Holloway	American Council on the Teaching of Foreign Languages (ACTFL)	www.actfl.org			Granted deferment from review because of low enrollment in program.			
Masters program in Educational Leadership	Dr. Brian Anderson	Educational Leadership Constituent Council (ELCC, representing AASA, ASCD, NAESP, NASSP)	www.aasa.org			Submitted an initial report, 9-15-12	Nationally recognized through 2019		Offsite electronic submission and review
Masters program in Reading/Literacy	Dr. Brian Anderson	International Reading Association (IRA)	www.reading.org			Submitted an initial report, 9-15-12	Nationally recognized through 2019		Offsite electronic submission and review
Bachelors, Social Studies Teacher Certification	Dr. Jonathan Hooks	National Council for Social Studies (NCSS)	www.socialstudies.org			Submitted an initial report, 9-15, 12, and responses to conditions, 3-15-12 & 9-15-12	Nationally recognized through 2019		Offsite electronic submission and review

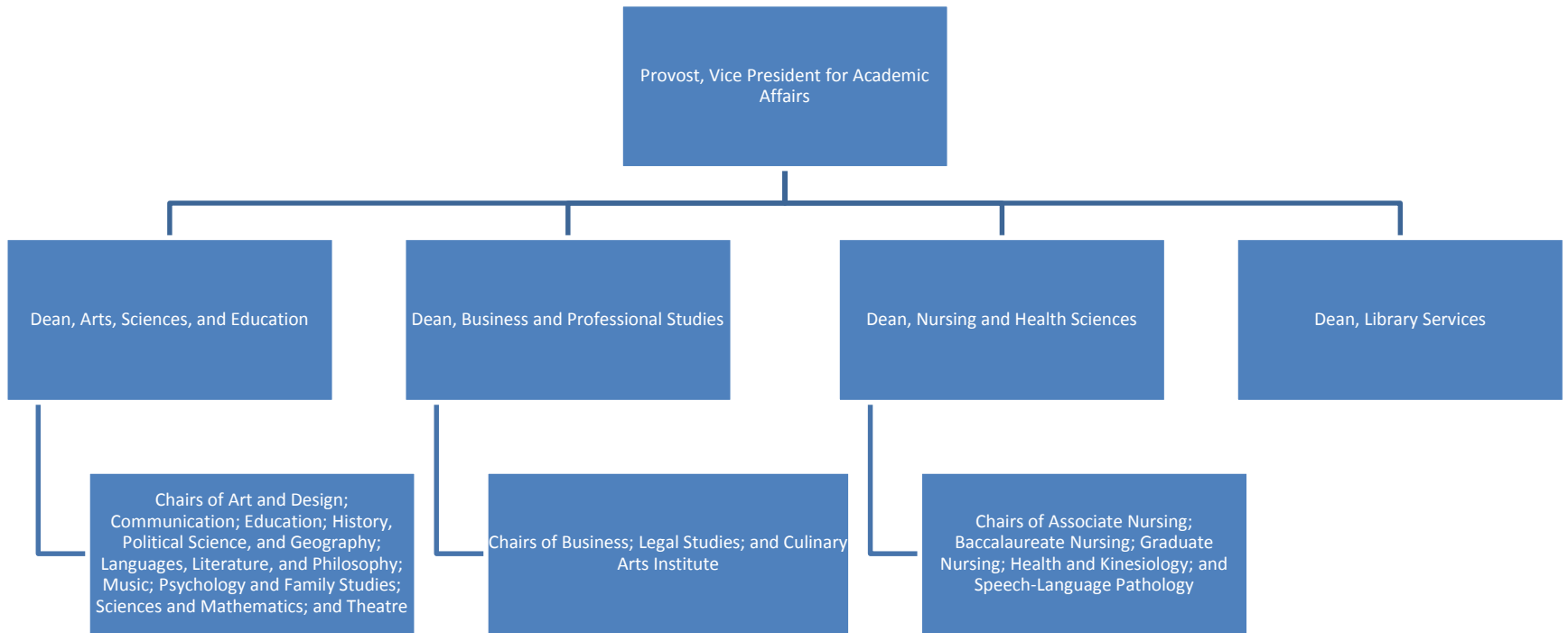
Accredited Program	Campus Contact for Accreditation	Accrediting Body (Acronym)	Website of Accrediting Body	Last* Visit	Next Visit	Required Institutional Action/Interim Reports	Accreditation Agency Action	Annual Fee: Membership	Size of Team/ Length of Visit
Bachelors, English with Teacher Certification	Dr. Brian Anderson	National Council of Teachers of English (NCTE)	www.ncte.org			Submitted an initial report, 9-15-12	Nationally recognized through 2019		Offsite electronic submission and review
Bachelors, Mathematics with Teacher Certification	Dr. Bonnie Oppenheimer	National Council for Teachers of Mathematics (NCTM)	www.nctm.org			Granted deferment from review because of low enrollment in program			
Bachelors, Biology with Teacher Certification	Dr. Blanca Simmons-Diez	National Science Teachers Association (NSTA)	www.nsta.org			Submitted an initial report, 3-15-12, submitted a second report , 3-15-13			Offsite electronic submission and review
Masters in Gifted Studies	Dr. Royal Toy	National Association of Gifted and Talented	www.nagc.org			Submitted an initial report, 9-15-11, submitted a response to conditions, 9-15-12	Nationally recognized through 2019		Offsite electronic submission and review
Masters of Arts in Teaching	Dr. Brian Anderson	NCATE	www.ncate.org		Fall 2019	Submitted an initial report, 9-15-11, submitted a response to conditions, 9-15-12	Low enrollment program, further development required		Offsite electronic submission and review

Provost/Vice President for Academic Affairs



August 1, 2017

Academic Units



August 1, 2017

Explanation of Terms

Academic Year is the year that begins with the first summer session and continues through the next spring session; for example, Academic Year 2017-2018 refers to Summer 2017, Fall 2017, and Spring 2018.

ACT is the American College Test, which is divided into four main sections: Mathematics, English, Reading, and Science Reasoning.

CIP Codes are the Classification of Instructional Program Codes that are updated every 10 years. We are currently operating under the 2010 CIP Codes. These six-digit codes are used to answer questions concerning program enrollments and completions on three of the IPEDS Surveys: Institutional Characteristics, Completions, and Enrollment.

Cohort refers to a specific population, which is studied over a period of time, such as a group of students who enrolled for the first time in the Fall of 2017.

EMAS is the Enrollment Management Action System software that is used by the Admissions Office.

Fiscal Year is the year that begins on July 1 and ends on June 30; for example, Fiscal Year 2017-2018 (FY 2018) extends from July 1, 2017 through June 30, 2018.

Full-time graduate student is one who is enrolled in 9 or more semester credit hours.

Full-time undergraduate student is one who is enrolled in 12 or more semester credit hours.

Graduate FTE (full-time equivalent) is calculated by dividing total graduate semester credit hours by 12.

Headcount as defined by IHL is the actual number of different individuals enrolled in credit courses. Headcount can be unduplicated or duplicated; a duplicated headcount duplicates students who take classes on more than one campus. According to IHL's duplicated headcount definition, an undergraduate student who takes nine hours on main campus and three hours at Tupelo is counted as two part-time undergraduate students. In duplicated headcount, a student's full-time/part-time status is determined by hours per campus not total hours taken.

IHL refers to the Board of Trustees of State Institutions of Higher Learning in Mississippi.

IPEDS is the Integrated Post-secondary Education Data System.

Non-traditional student, as defined by IHL, refers to an undergraduate student who is 25 years of age or over.

Part-time graduate student is one who is enrolled in less than 9 semester credit hours.

Part-time undergraduate student is one who is enrolled in less than 12 semester credit hours.

Ranked faculty are full-time faculty positions including instructors, assistant professors, associate professors, and professors.

SREB (Southern Regional Education Board) States include: Alabama, Arkansas, Delaware, Florida, Georgia, Kentucky, Louisiana, Mississippi, Maryland, North Carolina, Oklahoma, South Carolina, Tennessee, Texas, Virginia, and West Virginia.

Student Level, as defined by IHL

Definitions Effective as of the Beginning of Summer 2001

Freshmen – Students who have completed less than 30 semester hours.

Sophomores – Students who have completed at least 30 semester hours, but fewer than 60 semester hours.

Juniors – Students who have completed at least 60 semester hours, but fewer than 90 semester hours.

Seniors – Students who have completed at least 90 semester hours, but have not completed all the requirements for the undergraduate degree for which she/he is currently enrolled.

Fifth Year Level – Student is at advanced undergraduate upper level in five-year programs (e.g. architecture and engineering) or students with a bachelor's or higher degree who are taking additional undergraduate courses.

Master's – Student is in a program or degree that usually covers one year and approximately 30 semester hours above the baccalaureate.

Specialist – Student is in a program or degree that usually covers one year and approximately 30-36 semester hours above the baccalaureate.

Doctoral – Student is in a program or degree that usually covers two years and approximately 60 semester hours above the master's

Unclassified Post-baccalaureate – Student is not a candidate for a Baccalaureate degree or other formal award, although taking graduate classes with other students. Includes but is not limited to “special” and other students taking first-professional or graduate courses, but who are not working toward a degree.

First Professional – Student is in the first year of a Year/Level 1 program or degree leading to the first level of professional training, as recognized by others in the profession. Examples: J.D., M.D., D.V.M. etc.

Total Operating Budget includes restricted, designated, and auxiliary funding.

Type of current registration as defined by IHL:

First-time Freshman – (First-time Freshman--(1) A student who has never attended a college or university; or (2) a student who has previously attended any college or university for the first time in the prior summer term; or (3) a recent high school graduate who graduated in May and enrolled the following Fall term (regardless of summer enrollment); or (4) a student who successfully completed the twelve hour Summer Developmental Program regardless of the institution attended; or (5) a student with advanced standing (AP, CLEP or college credits earned before high school graduation).

As a general rule, recent high school graduates who enroll in the fall term after graduation should be counted as first-time freshmen, regardless of their academic activity between graduation and their fall enrollment. Students who skip the fall term and enter in the spring are still considered to be first-time freshmen if they have not attended another postsecondary institution. However, students who skip the fall and enroll in the spring with any prior coursework after high school are considered to be first-time transfers.

Note: Starting with the Summer 2009 term, the 12-hour requirement for first-time freshmen has been omitted in order to meet IPEDS criteria. Prior to that time first-time entering freshmen could not have more than 12 hours.

Unusual Examples of First-time Freshman:

A student completes the 9-week Summer Developmental Program at MSU and enrolls at MUW the following fall term. The student would be a first-time freshman at MUW.

All Summer Developmental Program students are to be coded as first-time freshmen regardless of institution attended.

A student graduates from Biloxi high school in May, earns 6 AP hours, takes 12 credit hours at Gulf Coast Community College the following summer, and enrolls at MUW the following fall. The student would be a first-time freshman at MUW.

A student graduates from Biloxi high school in May, takes 9 credit hours at Gulf Coast Community College the following summer, and enrolls at MUW the following spring term (he or she skips the fall term to work). *The student would be a first-time transfer at MUW.*

A student graduates from Tupelo high school in May, earns 15 AP hours, takes 15 credit hours at Northwest Community College the following summer, and enrolls at MUW the following fall. The student would be a first-time freshman at MUW (but have a sophomore academic level)

Returning Undergraduate Student – An undergraduate student who has registered at this institution during the preceding regular term and would not be classed as a first-time freshman.

Readmitted Student – An undergraduate student who previously attended this institution but did not attend this institution during the previous regular term.

First-Time Transfer Student --An undergraduate student entering the reporting institution for the first time who previously attended another postsecondary institution---exceptions include the first-time freshmen criteria outlined above. *These students may or may not have transfer credit hours.*

Note: Starting with the Summer 2009 semester, the 12-hour requirement for first-time transfers has been omitted in order to meet IPEDS criteria. Prior to that time first-time transfers were required to have at least 12 hours from another institution.

Note: Starting in Summer 2015, a student considered to be a first-time transfer student in the summer term should also be considered a first-time transfer student in the fall term (just as summer first-time freshmen are also first-time freshmen in the fall).

Unusual Examples of First-time Transfers:

A student attends Gulf Coast Community College as an entering freshman during the fall term and enrolls in 12 hours, but he or she is unable to complete the semester because of a medical hardship. When the student enrolls at MUW the following spring term, he or she is a first-time transfer student despite having no transferable hours (previously attended institution).

A student graduates from Biloxi high school in May, takes 9 credit hours at Gulf Coast Community College the following summer, and enrolls at MUW the following spring term (he or she skips the fall term to work). *The student would be a first-time transfer at MUW.*

Returning or Transfer Graduate Students – A student who is enrolled for credit for work creditable toward a graduate degree, i.e., master's, specialist, or doctorate and was previously registered as a graduate student at this institution or another institution.

First-Professional Student – A student who is enrolled for work creditable toward a first professional degree (law, dentistry, medicine)

Transient Student – A student who is regularly enrolled and in good standing at an institution other than the reporting institution and is taking a course or courses at the reporting institution which he/she intends to transfer to his/her regular institution.

High School Student Taking College Courses – A student who is still in high school but has special permission to take a college level course.

Non-formula Students 21 and over - A student who is currently registered under provisions or original admission code of 6 on data element 4-112 which is for students who are at least age 21 and who do not meet admissions standards and who do not fall into the first five Original Admission Code categories.

First-time graduate student – A new graduate student. One who has not been registered previously as a graduate student.

Other – A student who is not classified in one of the preceding categories.

Summer Developmental Program Participant – A student enrolled in the Summer Developmental Program. Valid in summer term only.

Returning Post Baccalaureate - A student who has already earned his or her baccalaureate degree (from any institution) and is taking additional undergraduate or graduate courses to continue his or her education. This is typically a non-degree student who is not enrolled in an academic program. This may include faculty and staff taking courses for lifelong learning.

Unduplicated headcount figures count each individual student once regardless of the number of branch campus affiliations (Tupelo, Italy).

Undergraduate FTE (full-time equivalent) is calculated by dividing total undergraduate semester credit hours by 15.

University Abbreviations:

ASU	Alcorn State University
DSU	Delta State University
JSU	Jackson State University
MSU	Mississippi State University
MUW	Mississippi University for Women
MVSU	Mississippi Valley State University
UM	University of Mississippi
UMMC	University of Mississippi Medical Center
USM	University of Southern Mississippi
MSU-AFVM	Mississippi State University's Division of Agriculture, Forestry, and Veterinary Medicine
USM-GCRL	University of Southern Mississippi's Gulf Coast Research Laboratory
USM-Stennis	University of Southern Mississippi's Stennis Space Center



CAMPUS DIRECTORY

1100 COLLEGE STREET, COLUMBUS, MS

Art and Design Building	10	MUW Counseling Center	50
Barbara Garrett Tennis Facility	56	Marie Charlotte Stark Recreation Building	59
Barrow Hall and Physical Plant	54	Martin Hall	7
Callaway Hall	26	Mary Wilson Home	18
Carrier Chapel	22	McDevitt Hall	36
Child/Parent Development Center	49	Motor Pool	47
Columbus Hall	28	Nancy Harris Hogarth Cafeteria	37
Cromwell Communications Center	51	Orr Annex	24
Demonstration School	9	Orr Building	25
Eckford Building (Health Center)	8	Painter Hall	5
Education & Human Sciences	48	Parkinson Hall	6
Emma Ody Pohl Physical Education Building	58	Peyton Hall	35
Eudora Welty Hall	23	Pohl Recreation	21
Facilities Maintenance Shop	66	Poindexter Hall	30
Fant Hall	20	President's Home	55
Fant Memorial Library	15	Puckett House	2
Franklin House	31	Reneau Hall	17
Frazer Hall	13	Soccer Field	45
Goen Hall	14	Shattuck Hall	32
Greenspace	52	Stovall House (Welcome Center)	3
Grossnickle Hall	4	Support Building	57
Grounds Maintenance & Automotive Building	46	Support Building	67
Hastings-Simmons Hall	29	Thad & Rose Cochran Hall	27
Hogarth Student Union	38	University Apartment Bld. 3	60
Hooper Science Hall	16	University Apartment Bld. 1	61
Jones Hall	12	University Apartment Bld. 2	62
Kincannon Hall	11	University Apartment Bld. 4	63
Legacy Garden	19	University Apartment Bld. 5	64
MSMS Performing Arts Center	44	University Apartment Bld. 6	65
MSMS Student Services	43	Whitfield Hall	1



- Administrative
- Academic
- Residential
- Support
- MSMS
- Decommissioned



muw.edu